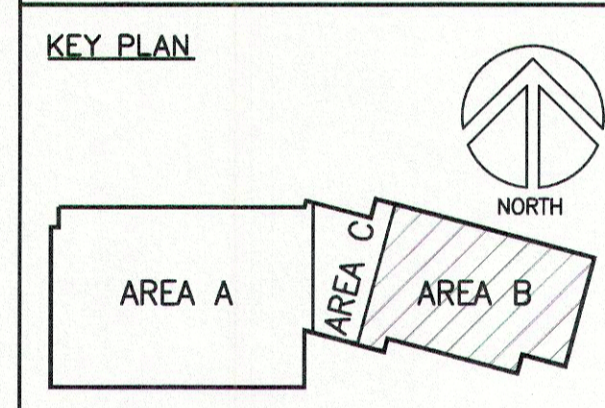
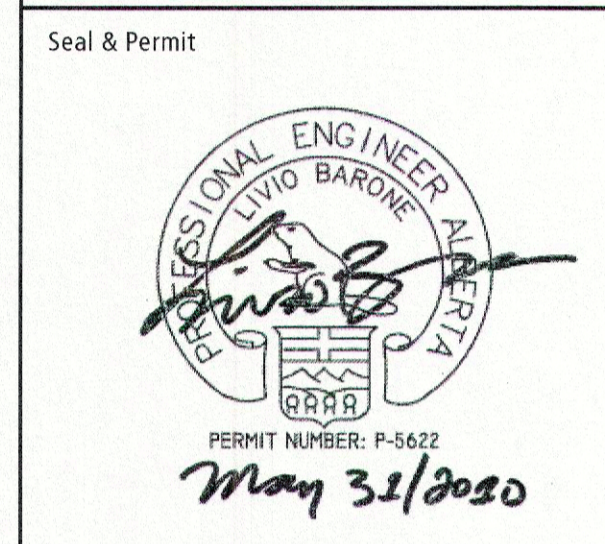


SECOND FLOOR ROOM LIST

200	MEZZANINE
201	MEN'S WASHROOM
202	WOMEN'S WASHROOM
203	MECHANICAL
204	MEZZANINE
205	JANITOR
206	DATA
207	PRE-FUNCTION
208	FUNCTION ROOM A
208A	CORRIDOR
209	STORAGE
210	FUNCTION ROOM B
211	STORAGE
212	FUNCTION ROOM C
213	STORAGE
214	SERVERY
215	OFFICE
215A	WASHROOM
216	VESTIBULE
217	OUTDOOR TERRACE
ST2	STAIR #2
ST3	STAIR #3
EL1	ELEVATOR #1
EL2	ELEVATOR #2



Project Team
 Structural Consultant
 HALCROW YOLLES
 Mechanical Consultant
 SNC LAVALIN
 Electrical Consultant
 STEBNICKI + PARTNERS
 Civil Consultant
 MPE ENGINEERING



Stebnicki + Partners
 Consulting Electrical Engineers

403, 1240 Kensington Road NW
 Calgary • Alberta • T2N 3P7
 Tel: 403.270.9359
 Fax: 403.270.9358
 www.stebpartners.com

4	ISSUED FOR BUILDING PERMIT	2010-08-01
3	ISSUED FOR TENDER	2010-05-07
2	ISSUED FOR 99% REVIEW	2010-04-30
1	ISSUED FOR 50% REVIEW	2010-04-08
No.	Description	Date

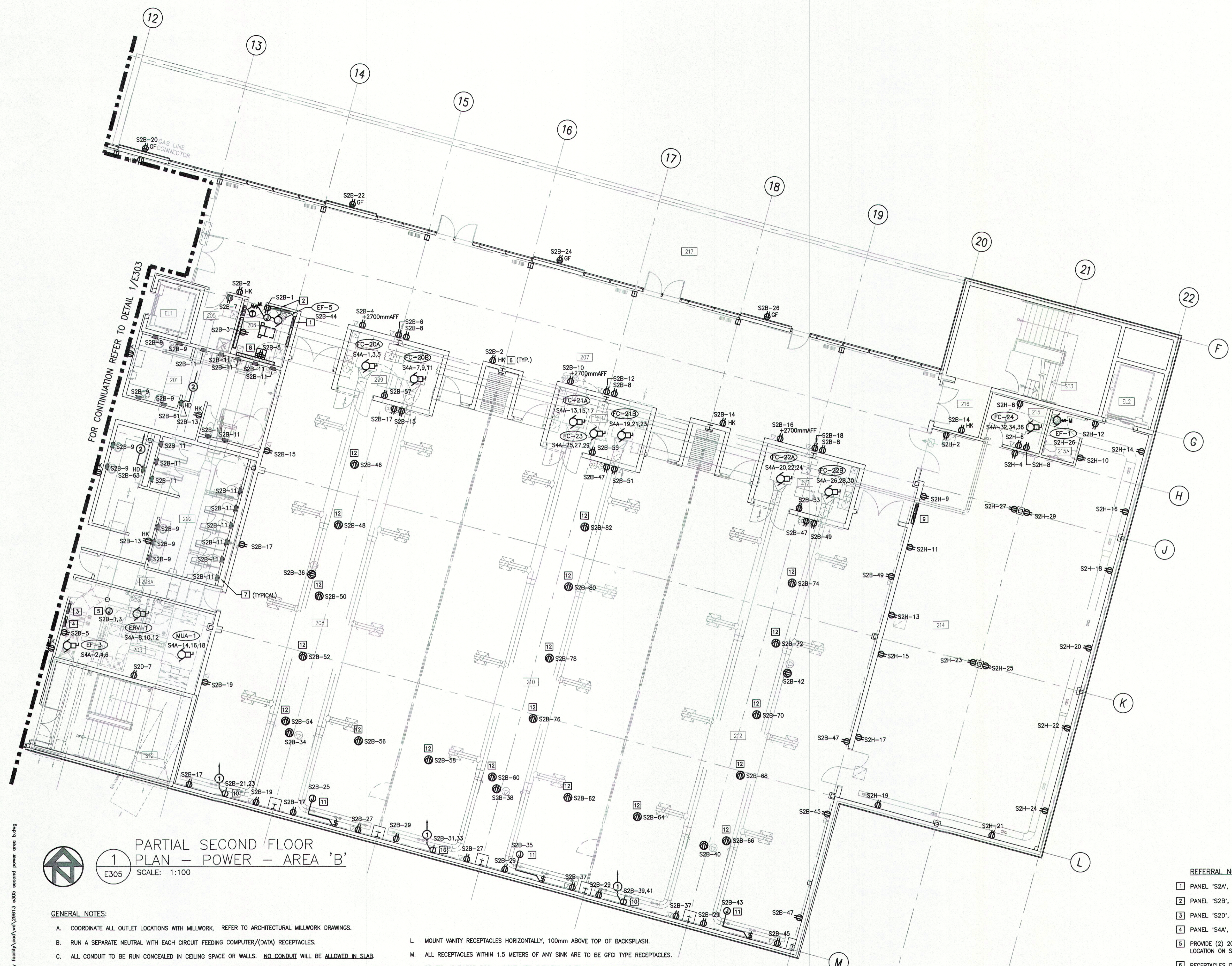
Drawing History

Scale (Drawing Scale is Based on A1 Sheet Size) Checked By AS NOTED

Project
BADLANDS COMMUNITY FACILITY

Drawing Title
PARTIAL SECOND FLOOR PLAN - POWER - AREA 'B'

Project Number Drawing Number
29613 E305



1
 PARTIAL SECOND FLOOR PLAN - POWER - AREA 'B'
 E305 SCALE: 1:100

- GENERAL NOTES:**
- COORDINATE ALL OUTLET LOCATIONS WITH MILLWORK. REFER TO ARCHITECTURAL MILLWORK DRAWINGS.
 - RUN A SEPARATE NEUTRAL WITH EACH CIRCUIT FEEDING COMPUTER/(DATA) RECEPTACLES.
 - ALL CONDUIT TO BE RUN CONCEALED IN CEILING SPACE OR WALLS. **NO CONDUIT WILL BE ALLOWED IN SLAB.**
 - CONDUIT FROM FLOOR OUTLETS ARE TO BE RUN BELOW SLAB. INSTALL A CONDUIT A MINIMUM OF 150mm BELOW UNDERSIDE OF SLAB TO TOP OF THE CONDUITS. NO CONDUIT WILL BE ALLOWED IN SLAB.
 - COORDINATE LOCATIONS OF ALL MECHANICAL MOTORS WITH DIV. 23. CONFIRM EXACT LOCATION PRIOR TO ROUGH-IN. (TYPICAL THROUGHOUT PROJECT).
 - REFER TO MOTOR SCHEDULE DWG E702, E703 FOR ALL MOTOR FEEDER SIZES.
 - PROVIDE 120V/24Vdc TRANSFORMER AT ALL DOORS C/W HOLD OPENS AND/OR MAGNETIC LOCKS. REFER TO ARCHITECTURAL DRAWINGS AND HARDWARE SCHEDULE PRIOR TO ROUGH-IN.
 - ALL CONDUITS RUN BELOW SLAB MUST BE INSTALLED A MINIMUM OF 150mm BELOW UNDERSIDE OF SLAB TO TOP OF CONDUIT & INSTALLED IN SAND BED.
 - BX CABLE MAY BE USED TO FEED DEVICES IN SAME WALL ONLY AND AS PER WIRING DETAILS. IT MAY NOT BE USED TO FEED DEVICES ON DIFFERENT WALLS, USED AROUND CORNERS OR LOOPED OVER DOORS OR WALLS.
 - ALL OUTLETS MOUNTED TOGETHER SHALL BE GANGED AT 150mm ON CENTRE.
 - CONFIRM ELECTRICAL REQUIREMENTS AND MOUNTING HEIGHT OF DRYERS AND EXTRACTORS PRIOR TO ROUGH-IN.
- CONDUIT TAG LEGEND:**
- ① RUN A 27mm CONDUIT C/W 3#6 & 1#10 GRD TO ASSOCIATED PANEL.
 - ② RUN A 21mm CONDUIT C/W 2#12 & 1#12 GRD TO ASSOCIATED PANEL.
- MOUNT VANITY RECEPTACLES HORIZONTALLY, 100mm ABOVE TOP OF BACKSPASH.
 - ALL RECEPTACLES WITHIN 1.5 METERS OF ANY SINK ARE TO BE GFCI TYPE RECEPTACLES.
 - CONFIRM ELEVATOR ROOM LAYOUT WITH ELEVATOR CONTRACTOR PRIOR TO INSTALLATION.
 - PROVIDE ALL CONDUIT AND ELECTRIC SERVICES FOR AUTO. DOOR OPERATORS. CONFIRM DEVICE LOCATION AND MOUNTING REQUIREMENTS PRIOR TO INSTALLATION.
 - MOUNT OUTLETS ON PERIMETER WALLS, HORIZONTALLY 150mm ABOVE TOP OF RADIATION CABINET. (WHERE APPLICABLE)
 - MAIN PANEL FEEDERS MAY BE RUN BELOW GRADE & INSTALLED 150mm BELOW UNDERSIDE OF SLAB TO TOP OF CONDUITS. ALL OTHER CONDUIT TO BE CONCEALED IN WALLS OR CEILING SPACES WHERE POSSIBLE.

REFERRAL NOTES:

- PANEL 'S2A', 120/208V 3ø, 4W. (LIGHTING)
- PANEL 'S2B', 120/208V 3ø, 4W. (POWER)
- PANEL 'S2D', 120/208V 3ø, 4W. (MECH EAST)
- PANEL 'S4A', 277/480V 3ø, 4W. (MECH RM EAST)
- PROVIDE (2) 20A-1P CIRCUITS FOR MECHANICAL CONTROLS. CONFIRM EXACT LOCATION ON SITE WITH CONTROLS CONTRACTOR AND DIV. 23.
- RECEPTACLES DENOTED WITH 'HK' (HOUSEKEEPING) TO BE 15/20A T-SLOT 5-20R CONFIGURATION C/W 20A-1P BREAKER.
- PROVIDE 120V CONNECTION TO INFRA-RED HANDS FREE SENSORS AT SINKS AND TOILETS. PROVIDE 24VAC TRANSFORMER AND ALL CONDUIT AND WIRING FOR A COMPLETE WORKING SYSTEM (TYPICAL THROUGHOUT)
- FUNCTION ROOMS SOUND SYSTEM.
- PANEL 'S2H', 120/208V 3ø, 4W. (POWER)
- 208V, 50A 1ø RECEPTACLE FOR EVENT POWER.
- PROVIDE 120V CONNECTION TO MOTORIZED SCREEN.
- RECEPTACLE FOR FUTURE LIGHT TRUSSES TO BE 15/20A T-SLOT (5-20R CONFIGURATION) C/W 20A-1P BREAKER. REFER TO ARCHITECTURAL DRAWINGS: A705, DETAIL 7/A808 AND DETAIL 15/A807.

PLOT DATE: 2010-05-31 2:31 PM
 FILE NAME: C:\working\2009 files\29613 badlands community facility\cadd\29613_e305 second floor area_b.dwg
 PLOTTED BY: kschindler