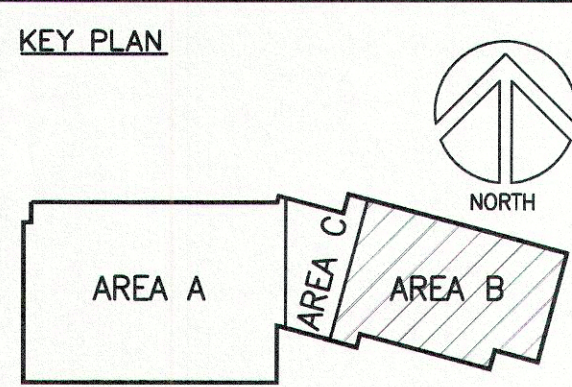
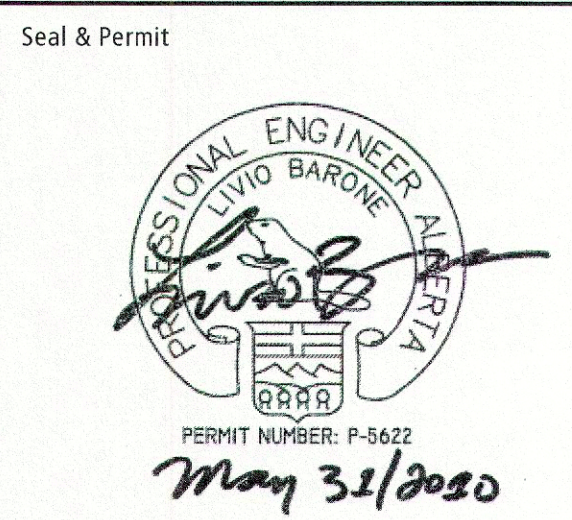


SECOND FLOOR ROOM LIST

200	MEZZANINE
201	MEN'S WASHROOM
202	WOMEN'S WASHROOM
203	MECHANICAL
204	MEZZANINE
205	JANITOR
206	DATA
207	PRE-FUNCTION
208	FUNCTION ROOM A
208A	CORRIDOR
209	STORAGE
210	FUNCTION ROOM B
211	STORAGE
212	FUNCTION ROOM C
213	STORAGE
214	SERVERY
215	OFFICE
215A	WASHROOM
216	VESTIBULE
217	OUTDOOR TERRACE
ST2	STAIR #2
ST3	STAIR #3
EL1	ELEVATOR #1
EL2	ELEVATOR #2

Project Team
Structural Consultant
HALCROW YOLLES
Mechanical Consultant
SNC LAVALIN
Electrical Consultant
STEBNICKI + PARTNERS
Civil Consultant
MPE ENGINEERING



Stebnicki + Partners
Consulting Electrical Engineers
403, 1240 Kensington Road NW
Calgary, Alberta T2N 3P7
Tel: 403.270.8535
Fax: 403.270.9358
www.stebnickipartners.com

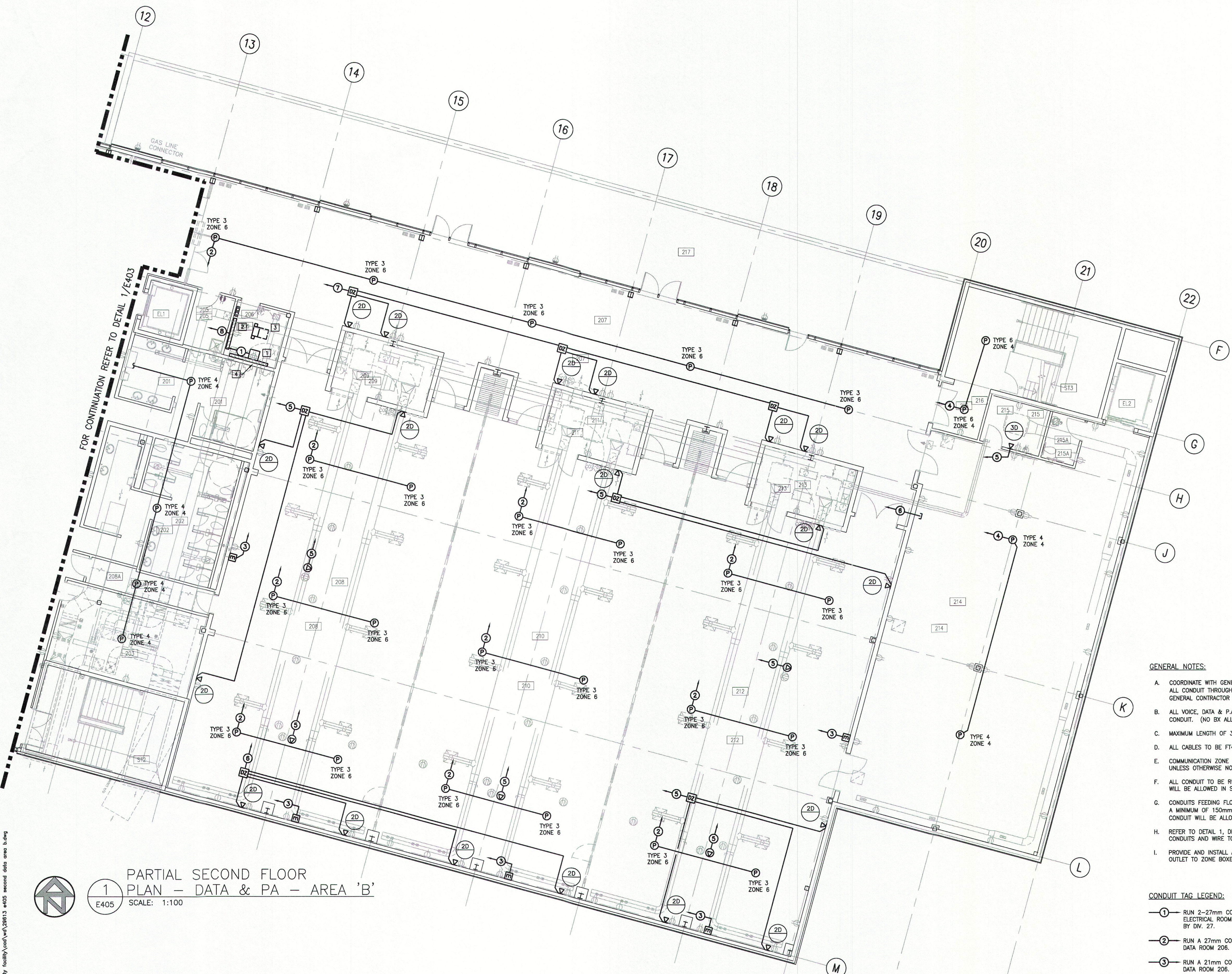
4	ISSUED FOR BUILDING PERMIT	2010-06-01
3	ISSUED FOR TENDER	2010-05-07
2	ISSUED FOR 99% REVIEW	2010-04-30
1	ISSUED FOR 50% REVIEW	2010-04-08

Drawing History
Scale: (Drawing Scale is Based on A1 Sheet Size) Checked By AS NOTED

Project
BADLANDS COMMUNITY FACILITY

Drawing Title
PARTIAL SECOND FLOOR PLAN - DATA & PA - AREA 'B'

Project Number 29613 Drawing Number E405



1 PARTIAL SECOND FLOOR PLAN - DATA & PA - AREA 'B'
E405 SCALE: 1:100

GENERAL NOTES:

- COORDINATE WITH GENERAL CONTRACTOR TO PROVIDE AND INSTALL FIRE STOPPING AT ALL CONDUIT THROUGH FIRE WALLS. (TYPICAL THROUGH-OUT) COORDINATE WITH GENERAL CONTRACTOR FOR RATING AND SYSTEM REQUIREMENTS. (TYPICAL)
- ALL VOICE, DATA & P.A. CARLING TO BE SUPPLIED BY DIV. 27 AND TO BE RUN IN CONDUIT. (NO BX ALLOWED).
- MAXIMUM LENGTH OF 30 METERS BETWEEN PULL POINTS OR PULL BOXES.
- ALL CABLES TO BE FT4 RATED.
- COMMUNICATION ZONE BOXES TO BE 305mmSQ. x 150mmD. TYPICAL FOR ALL UNLESS OTHERWISE NOTED.
- ALL CONDUIT TO BE RUN IN CEILING SPACE OR CONCEALED IN WALLS. NO CONDUIT WILL BE ALLOWED IN SLAB.
- CONDUITS FEEDING FLOOR OUTLETS ARE TO BE RUN BELOW SLAB. INSTALL CONDUIT A MINIMUM OF 150mm BELOW UNDERSIDE OF SLAB TO TOP OF CONDUITS. (NO CONDUIT WILL BE ALLOWED IN SLAB)
- REFER TO DETAIL 1, DRAWING E807 FOR MAIN COMMUNICATIONS INTERCONNECTING CONDUITS AND WIRE TO BE SUPPLIED BY DIV. 25 & 27.
- PROVIDE AND INSTALL A MINIMUM 27mm CONDUIT FROM EACH DATA VOICE OR MEDIA OUTLET TO ZONE BOXES AS SHOWN.

CONDUIT TAG LEGEND:

- RUN 2-27mm CONDUITS C/W PULLWIRE TO COMMON AREA SOUND SYSTEM IN ELECTRICAL ROOM 167. REFER TO SPECIFICATIONS FOR WIRING REQUIREMENTS BY DIV. 27.
- RUN A 27mm CONDUIT C/W PULLWIRE TO FUNCTION ROOMS SOUND SYSTEM IN DATA ROOM 206.
- RUN A 21mm CONDUIT C/W PULLWIRE TO FUNCTION ROOMS SOUND SYSTEM IN DATA ROOM 206.
- RUN A 21mm CONDUIT C/W PULLWIRE TO COMMON AREA SOUND SYSTEM IN ELECTRICAL ROOM 167.
- RUN A 27mm CONDUIT C/W PULLWIRE TO SUB TELEPHONE/DATA/TV BACKBOARD IN DATA ROOM 206.
- RUN A 35mm CONDUIT C/W PULLWIRE TO SUB TELEPHONE/DATA/TV BACKBOARD IN DATA ROOM 206.
- RUN A 41mm CONDUIT C/W PULLWIRE TO SUB TELEPHONE/DATA/TV BACKBOARD IN DATA ROOM 206.
- REFER TO DETAIL 1, DWG E807 FOR INTERCONNECTING CONDUITS BETWEEN SUB DATA BACKBOARDS.

REFERRAL NOTES:

- FUNCTION ROOM SOUND SYSTEM RACK.
- SUB TELEPHONE/DATA/TV BACKBOARD.
- SUB DATA/VOIP RACK.
- FUNCTION ROOM SOUND TERMINATION BACKBOARD.