

REVISIONS

NO.	DATE	REVISION	BY
1	12.07.04	ISSUED FOR REVIEW	CS
2	12.08.12	ISSUED FOR FINAL REVIEW	CS
3	12.08.19	ISSUED FOR BP/TENDER	CS

GENERAL NOTES:

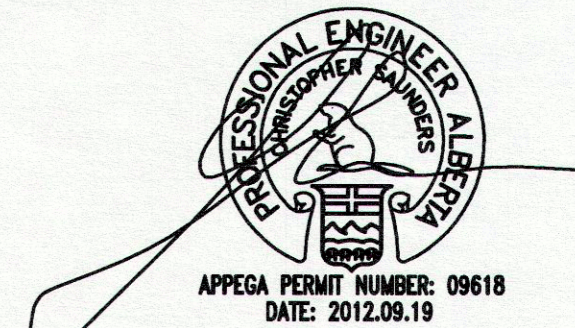
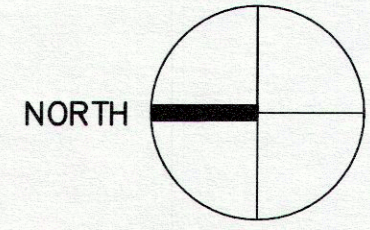
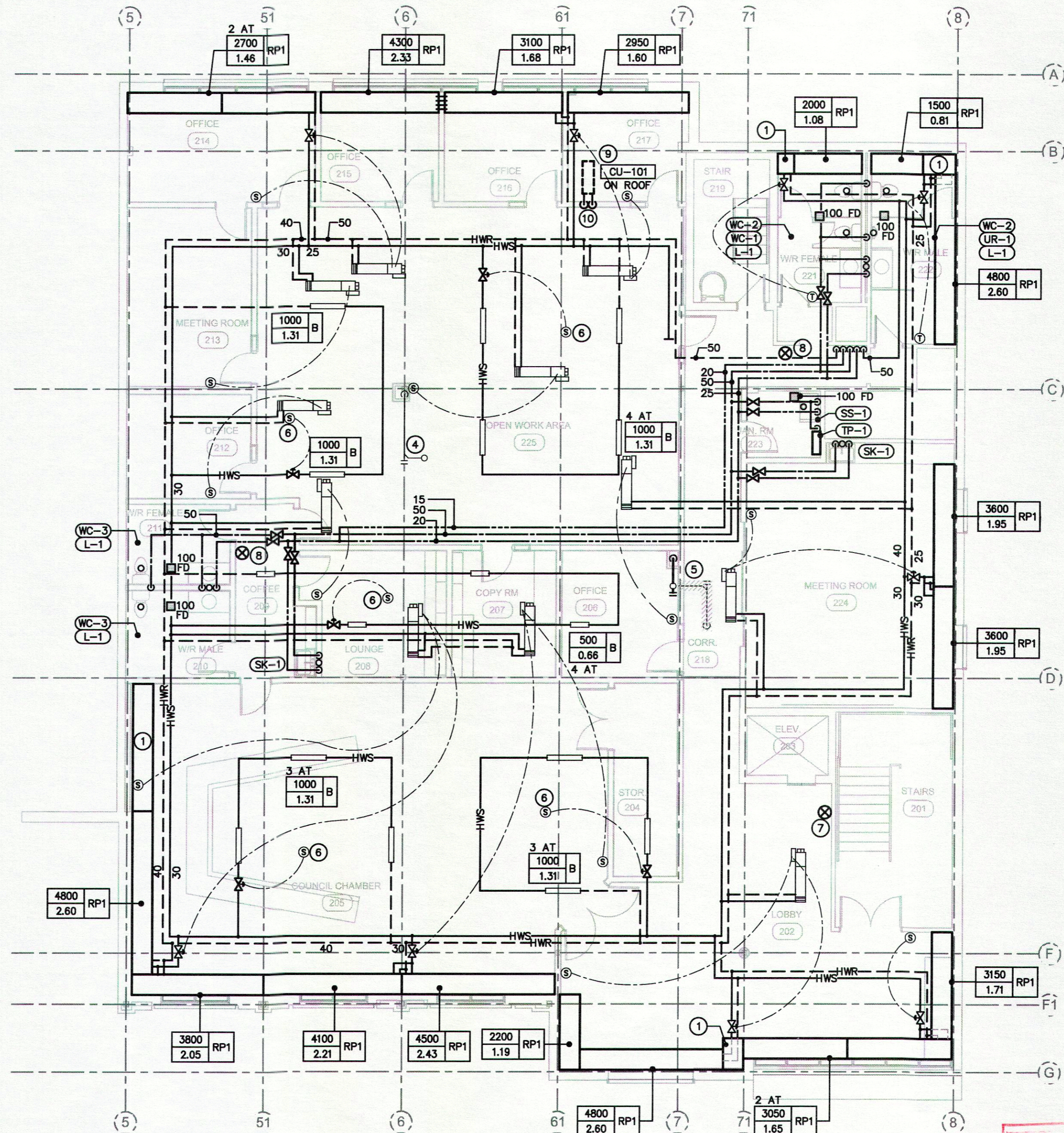
- SLOPE ALL SANITARY MAINS AT 1% SLOPE UNLESS OTHERWISE NOTED.
- PLUMBING VENTS NOT SHOWN. CONTRACTOR TO INSTALL PLUMBING VENTS IN ACCORDANCE WITH NATIONAL PLUMBING CODE. PLUMBING VENTS TO BE COLLECTED AND TERMINATED THRU ROOF WHERE SHOWN ON DRAWING M201.
- EXTEND CLEANOUTS OUT OF ALL HIGH TRAFFIC AREAS
- ALL HEATING WATER BRANCH LINE SIZES TO BE 20mm UNLESS NOTED OTHERWISE ON PLAN.

FIXTURE ROUGH-IN TABLE

FIXTURE TYPE	COLD WATER	HOT WATER	WASTE	VENT
WATER CLOSET (FLUSH VALVE)	25	-	100	50
URINAL	15	-	50	40
LAVATORY	15	15	30	30
SINGLE COMPARTMENT SINK	15	15	40	30
SERVICE SINK	15	15	75	50
TRAP PRIMING MANIFOLD	15	-	-	-
FLOOR DRAIN	-	-	100	50
FLOOR DRAIN WITH TRAP PRIMER	7	-	100	50

KEYNOTES:

- INACTIVE RADIANT PANEL.
- CUT RADIANT PANELS FOR STRUCTURAL COLUMNS. REFER TO STRUCTURAL DRAWINGS FOR EXACT LOCATIONS.
- DROP 15 DCW & 15 DHW DOWN FOR DISTRIBUTION TO LAV'S. REFER TO FIXTURE ROUGH-IN SCHEDULE FOR CONNECTION SIZES.
- EXISTING STORM TO REMAIN AS IS.
- REMOVE EXISTING 150 STORM PIPING IN CEILING AND IN VERTICAL. RECONNECT AND DROP IN NEW SHAFT LOCATION AS SHOWN.
- SENSOR TO BE MOUNTED IN CEILING SPACE.
- SURFACE MOUNTED 4.5KG ABC FIRE EXTINGUISHER CABINET.
- SEMI-RECESSED 4.5KG ABC FIRE EXTINGUISHER CABINET.
- CONDENSING UNIT LOCATED ON NEW CONCRETE PAD ON ROOF. COORDINATE WITH STRUCTURAL.
- REFRIGERATION PIPING DOWN TO MAIN FLOOR SERVER ROOM, REFER TO DRAWING M1.01.



HIDI RAE CONSULTING ENGINEERS INC.
 Southcentre Executive Tower
 11012 MacLeod Trail S., Ste. 240
 Calgary, Alberta T2J 6A5
 T: 403.271.0100
 F: 403.271.0122

MECHANICAL - ELECTRICAL - COMMUNICATIONS

Group2
 architecture
 engineering
 Group2 Architecture Engineering Ltd.

Real Door Office: Calgary Office: Edmonton Office:
 Tel: 403.240.2200 Tel: 403.213.2311 Tel: 780.447.9990
 E: general@group2.ab.ca www.group2.ab.ca

PROJECT TITLE
DRUMHELLER TOWN HALL RELOCATION

DRAWING TITLE
SECOND FLOOR PLUMBING AND HEATING PLAN

AN ACCREDITED
 NOV 05 2012
 EXAMINED
 See Letter

CHECKED | DRAWN | DATE
 CS | AP | 06/19/12
 12034 | M2.01
 FILE | DRAWING