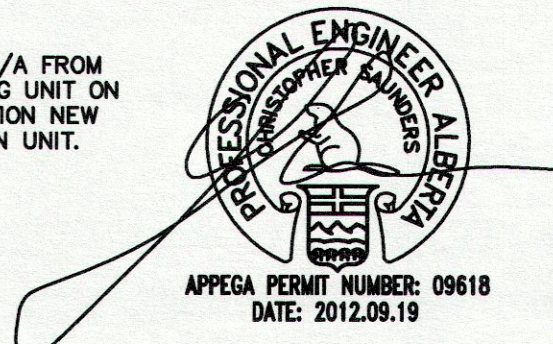
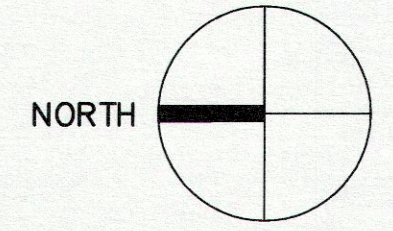
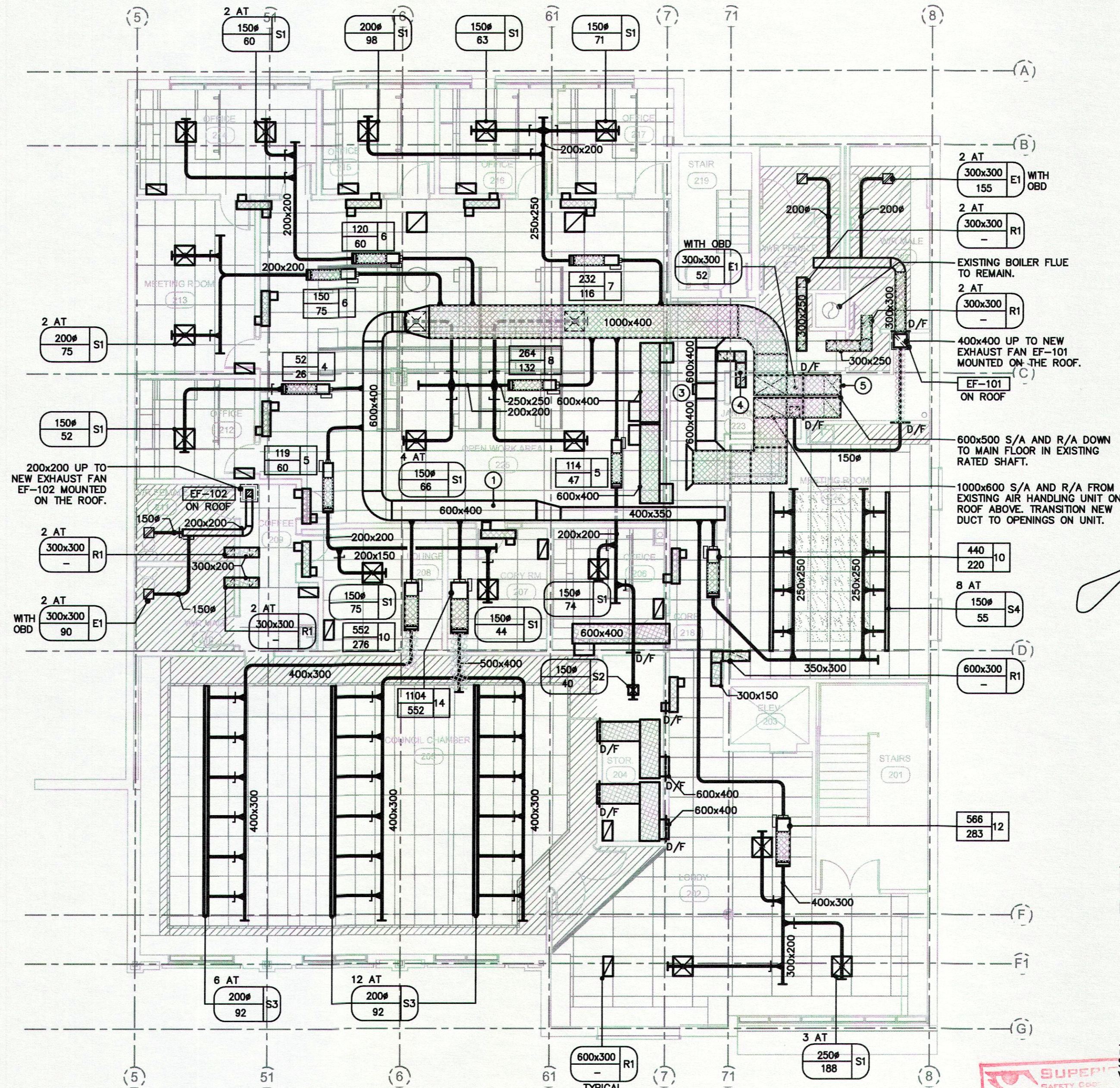


REVISIONS

NO.	DATE	REVISION	BY
1	12.07.04	ISSUED FOR REVIEW	CS
2	12.09.12	ISSUED FOR FINAL REVIEW	CS
3	12.09.19	ISSUED FOR BP/TENDER	CS

- GENERAL NOTES:**
1. ALL RETURN AIR GRILLES TO BE TYPE R1 600x300 UNLESS NOTED OTHERWISE.
  2. SIZE OF ALL DUCTWORK TO VAV BOXES TO BE EQUAL TO BOX INLET SIZE UNLESS NOTED OTHERWISE.
  3. SIZE OF ALL BRANCH DUCTS TO DIFFUSERS TO BE EQUAL TO DIFFUSER INLET SIZE.
  4. REFER TO THE PLUMBING AND HEATING PLANS FOR ALL THERMOSTAT LOCATIONS.
  4. ALL TRANSFER AIR DUCTS TO BE 250x250 UNLESS NOTED OTHERWISE.
  5. REFER TO DETAIL'S SHEET FOR DETAIL OF TRANSFER AIR DUCTS.

- KEYNOTES:**
1. INSTALL STATIC PRESSURE SENSOR IN DUCT. PROVIDE STAND ALONE INTELLIGENT CONTROLLER FOR PRESSURE CONTROL VALVE.
  2. EVAPORATOR MOUNTED ON WALL. EXACT LOCATION TO BE COORDINATED WITH OTHER EQUIPMENT IN ROOM PRIOR TO INSTALLATION. PIPE CONDENSATE TO NEAREST DRAIN. CONDENSING UNIT MOUNTED ON THE ROOF ABOVE. INSTALL AS PER MANUFACTURERS RECOMMENDATIONS.
  3. EH PRICE MODEL 16x24 PCV PRESSURE CONTROL VALVE.
  4. 300x150 TRANSFER AIR DUCT.
  5. MECHANICAL CONTRACTOR TO ADD HOT GAS BYPASS TO THE EXISTING ROOFTOP UNIT.

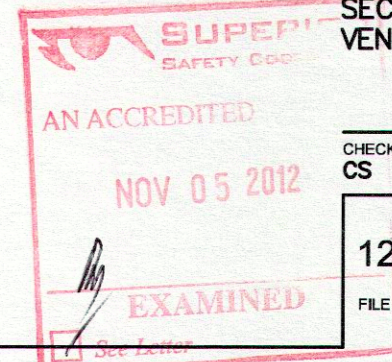


HIDI RAE CONSULTING ENGINEERS INC.  
 Southcentre Executive Tower  
 11012 MacLeod Trail S., Ste. 240  
 Calgary, Alberta T2J 6A5  
 T: 403.271.0100 F: 403.271.0122

**Group2**  
 architecture  
 engineering  
 Group2 Architecture Engineering Ltd.  
 Reg. Dear Office: T: 403.340.2208  
 Calgary Office: T: 403.717.2511  
 Edmonton Office: T: 780.447.2950  
 E: general@group2.ab.ca www.group2.ab.ca

PROJECT TITLE  
**DRUMHELLER TOWN HALL RELOCATION**

DRAWING TITLE  
**SECOND FLOOR VENTILATION PLAN**



CHECKED	DRAWN	DATE
CS	AP	06/19/12
FILE	DRAWING	

12034 M2.02