

REVISIONS

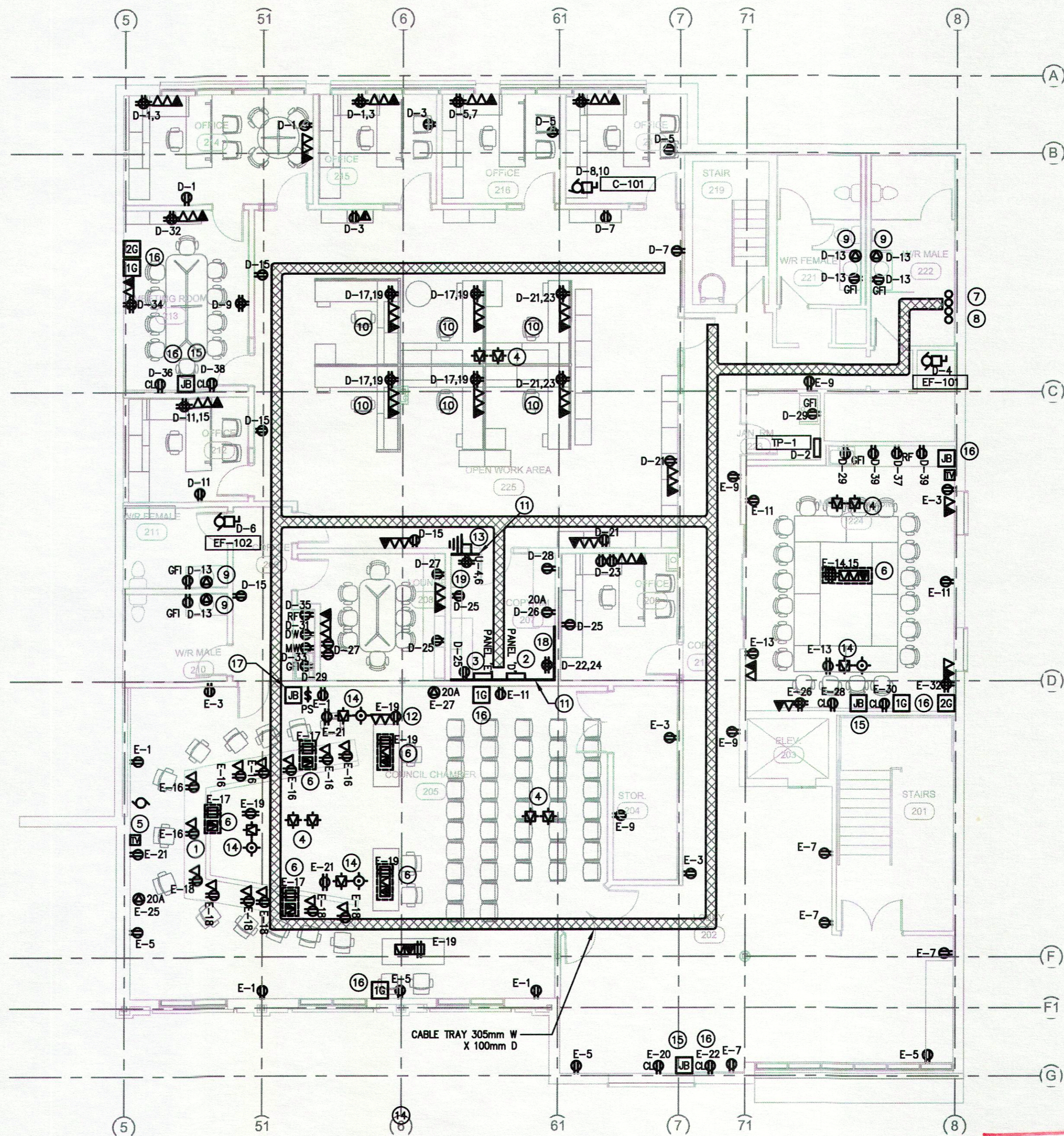
NO.	DATE	REVISION	BY
1	12.06.10	ISSUED FOR BP/TENDER	NM

**ELECTRICAL GENERAL NOTES:**

1. CONTRACTOR TO REFER TO ARCHITECTURAL DRAWINGS FOR EXACT MOUNTING HEIGHTS OF RECEPTACLES.
2. PROVIDE ADDITIONAL BREAKERS IN EXISTING AND RELOCATED PANELS FOR INDICATED CIRCUITS. REFER TO PANEL SCHEDULES.
3. COORDINATE AV CONDUIT ROUGH-IN FOR LOCATION #205 WITH ARCHITECTURE AND AV CONTRACTOR.
4. FINAL RECEPTACLE LOCATIONS IN SERVER OR IT ROOMS TO BE COORDINATED WITH RACK LAYOUT.
5. FOR PANELS THAT ARE RE-TAGGED, CONTRACTOR TO LABEL ASSOCIATED CIRCUITS WITH UPDATED PANEL DESIGNATIONS.

**POWER KEYNOTES:**

1. DESK UNIT WITH BUILT IN DATA AND POWER RECEPTACLES IN FURNITURE. CONNECTION VIA RECESSED FLOOR BOX
2. RELOCATED PANEL 'D'
3. NEW PANEL 'E'
4. WIRELESS ACCESS POINT IN CEILING SPACE ABOVE T-BAR CEILING
5. RECEPTACLE AND JUNCTION BOX FOR WALL MOUNTED LCD TV. FINALIZE LOCATION WITH ARCHITECTURE/AV CONSULTANT
6. FLOOR BOX TO BE LEGRAND FIRE CLASSIFIED EVOLUTION SERIES FLOOR BOX CAT NO.: EFB10S-FC EFB610CTCNK. PROVIDE ALL NECESSARY ADAPTORS AND EQUIPMENT.
7. TELECOMMUNICATIONS RISER
8. POWER RISER
9. 120V FOR PLUMBING FIXTURES
10. COORDINATE DATA AND POWER INSTALLATION WITH SUPPLIED FURNITURE
11. 20mm FIRE RATED PLYWOOD
12. SWITCH LOCATION IN MILLWORK
13. GROUNDING POINT FOR TELECOM EQUIPMENT
14. PROJECTOR RECEPTACLES AND OUTLETS TO BE MOUNTED IN CEILING SPACE ABOVE T-BAR
15. RECEPTACLE AND JUNCTION BOX FOR WALL MOUNT LCD TV. FINALIZE LOCATION WITH ARCHITECTURE/AV CONSULTANT
16. 27mm CONDUIT C/W PULL STRING FROM JUNCTION BOX AND STUB TO CEILING SPACE
17. JUNCTION BOX AND 27mm CONDUIT BACK TO A/V SERVER ROOM FOR A/V CONTROL EQUIPMENT
18. DEDICATED OUTLET FOR AV RACK
19. DEDICATED OUTLET FOR IT RACK



APPEGA PERMIT NUMBER: 113456  
DATE: September 19, 2012

HIDI RAE  
CONSULTING ENGINEERS INC.  
Southcentre Executive Tower  
1102 Macdonald Trail S. Ste. 240  
Calgary, Alberta T2J 5A5  
T. 403.271.0100  
F. 403.271.0122

MECHANICAL - ELECTRICAL - COMMUNICATIONS

**Group2**  
architecture  
engineering  
Group2 Architecture Engineering Ltd.

Reg. Ques. Office: Calgary Office: Edmonton Office:  
T. 403.340.2230 T. 403.317.2111 T. 780.447.2090  
E. general@group2.ab.ca www.group2.ab.ca

PROJECT TITLE  
**DRUMHELLER TOWN HALL RELOCATION**

DRAWING TITLE  
**SECOND FLOOR - POWER PLAN**

**SUPERIOR SAFETY CODES**  
AN ACCREDITED ACT  
NOV 05 2012

CHECKED	DRAWN	DATE
NM	FL	12/06/28

12034 | E1.02  
FILE | DRAWING

**EXAMINED**  
See Letter