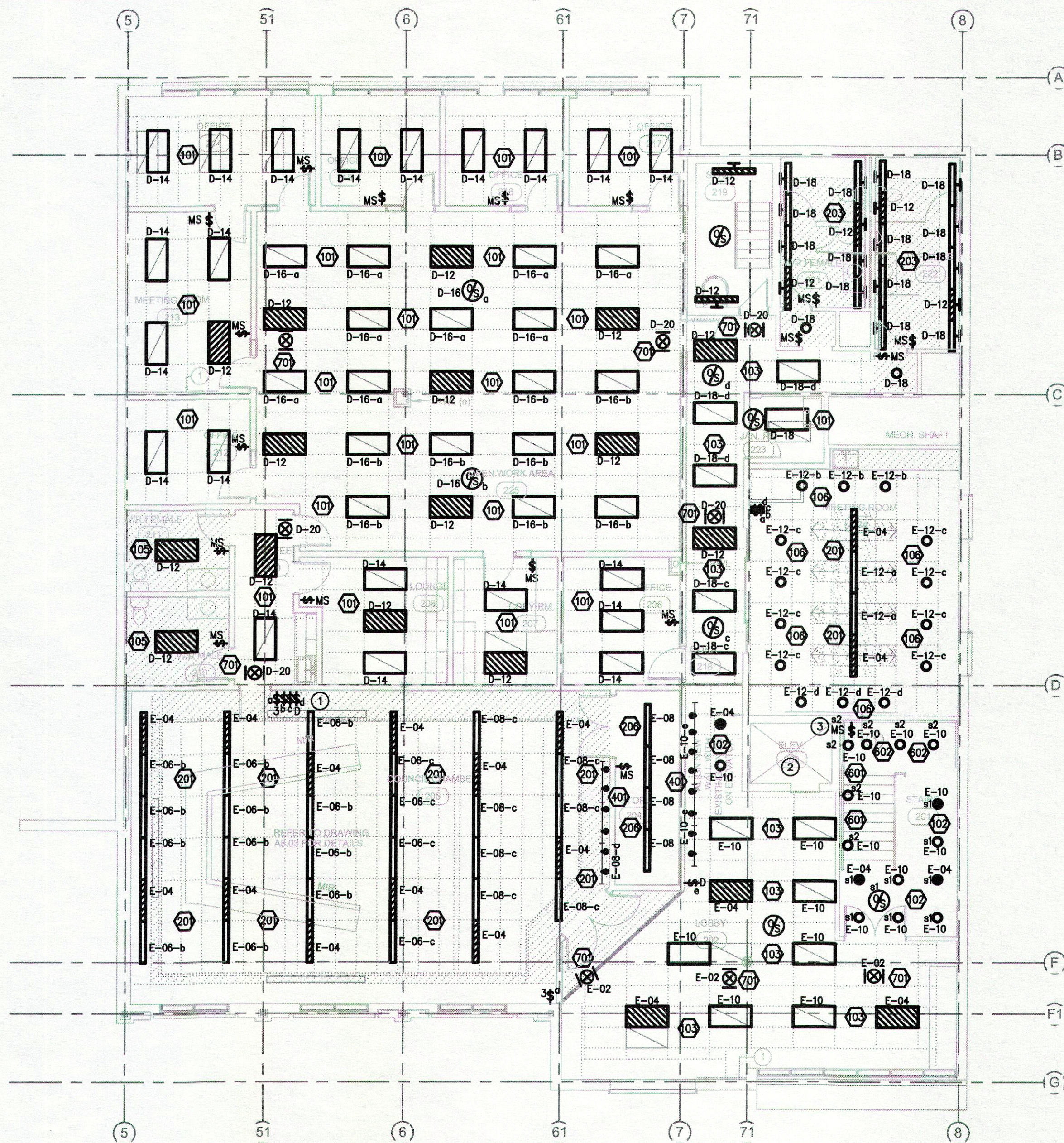


**ELECTRICAL GENERAL NOTES:**

1. REFER TO ARCHITECTURE DRAWINGS FOR CEILING PLANS. PROVIDE LIGHTING TO MATCH
2. PROVIDE ALL LIGHTING WITH COMPLETE MOUNTING ACCESSORIES
3. EMERGENCY LIGHTING TO COMPLETE WITH BODINE B-50 EMERGENCY BALLAST.

**LIGHTING KEYNOTES:**

- 1 SWITCH BANK FOR ROOM 205
- 2 REPLACE EXISTING LIGHTING IN ELEVATOR SHAFT WITH NEW 2 LAMP T8 WALL MOUNTED LUMINAIRE. REFER TO DETAILS 3 AND 4 OF E5.01
- 3 CONFIRM LOCATION OF WALL MOUNTED SENSOR SWITCH IN STAIRWELL ON SITE TO MAXIMIZE THE SENSOR COVERAGE

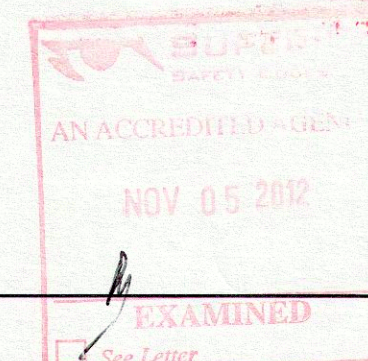


**REVISIONS**

NO.	DATE	REVISION	BY
1	12.06.19	ISSUED FOR BP/TENDER	NM

PROFESSIONAL ENGINEER ALBERTA  
 INDIANISO MANGENA  
 APPEGA PERMIT NUMBER: 113456  
 DATE: September 19, 2012  
 HIDI RAE CONSULTING ENGINEERS INC.  
 Southcentre Executive Tower  
 11012 MacLeod Trail S., Ste. 240  
 Calgary, Alberta T2C 1A2  
 T: 403.271.0100 F: 403.271.0122  
 MECHANICAL - ELECTRICAL - COMMUNICATIONS  
**Group2**  
 architecture  
 engineering  
 Group2 Architecture Engineering Ltd.  
 West Tower Office: 403.249.2270  
 Calgary Office: 403.271.2511  
 Edmonton Office: 780.447.2990  
 E: general@group2.ab.ca W: www.group2.ab.ca  
 PROJECT TITLE  
**DRUMHELLER TOWN HALL RELOCATION**

DRAWING TITLE  
**SECOND FLOOR - LIGHTING PLAN**



CHECKED/DRAWN	NM	FL	DATE	12/06/28
FILE	12034	E2.02	DRAWING	