

S-1

AutoCAD

CADD DRAWING NO MANUAL CHANGES

DIVISION 01 - GENERAL REQUIREMENTS

- 1. THE GENERAL CONDITIONS OF THE CONTRACT AND GENERAL REQUIREMENTS FORM AND INTEGRAL PART OF THE REQUIREMENTS OF THE FOLLOWING SPECIFICATIONS.
2. THE CONSTRUCTION SHALL BE TO THE APPROVAL OF ALL LOCAL AND PROVINCIAL CODES, ORDINANCES, BYLAWS AND REGULATIONS AND AS PER:
- ALBERTA BUILDING CODE 1990 ABC
- ENGINEERING DESIGN IN WOOD (LIMIT STATES DESIGN) CSA CAN3-086.1
CONTRACTOR SHALL ADHERE TO THE MOST STRINGENT REQUIREMENTS OF THE SPECIFICATIONS, MANUFACTURERS' REQUIREMENTS OR CODE.
4. THE CONTRACTOR MAY QUOTE ON PRODUCTS ACCEPTED BY THE ENGINEER AS EQUIVALENT TO SPECIFIED EQUIPMENT / COMPONENTS IN ACCORDANCE WITH PART III INSTRUCTIONS TO TENDERERS.
5. DESIGN LOADS:
LIVE (SERVICE) LOADS
- GROUND SNOW LOAD Sg = 0.1 kPa Ss = 1.1 kPa
- MECHANICAL ROOM FLOOR LIVE LOAD 3.6 kPa
DEAD (SERVICE) LOADS
- ROOF SYSTEM (INCLUDES TRUSS SELF WEIGHT) 1.00 kPa
- MECHANICAL AND ELECTRICAL EQUIPMENT 0.25 kPa
6. THE CONTRACTOR SHALL ENSURE COMPLIANCE WITH THE APPLICABLE WORKERS' COMPENSATION AND OCCUPATIONAL HEALTH AND SAFETY LEGISLATION, ON HIS PART AND THE PART OF ALL SUBCONTRACTORS. THE CONTRACTOR SHALL COMPLY WITH ALL APPLICABLE LAWS AND ORDINANCES, RULES, REGULATIONS AND LAWFUL ORDERS OF ANY PUBLIC AUTHORITY HAVING JURISDICTION FOR THE SAFETY OF PERSONS OR PROPERTY, AND TO PROTECT THEM FROM DAMAGE, INJURY OR LOSS. AT PROJECT COMPLETION, PROVIDE ONE SET OF RECORD DRAWINGS TO THE OWNER, WITH ALL CHANGES RECORDED IN RED.

DIVISION 02 - DEMOLITION

- 1. PERFORM ALL DEMOLITION WORK TO THE FOLLOWING STANDARDS:
- ALBERTA BUILDING CODE, 1990
- ALBERTA UNIFORM BUILDING STANDARDS ACT
- WORKERS COMPENSATION ACT, SAFETY REGULATIONS GOVERNING BUILDING, CONSTRUCTION AND DEMOLITION
- ALBERTA OCCUPATIONAL HEALTH AND SAFETY ACT
- SAFETY REGULATIONS GOVERNING GENERAL ACCIDENT PREVENTION
THE CONTRACTOR SHALL VISIT THE SITE AND NOTE ALL CHARACTERISTICS AND IRREGULARITIES AFFECTING THE WORK. THE CONTRACTOR SHALL ACCEPT THE STRUCTURES AND COMPONENTS TO BE DEMOLISHED IN THEIR CONDITION ON THE DATE OF TENDER CALL. TO PROCEED WITH THE WORK WILL MEAN ACCEPTANCE OF THE CONDITIONS, AND FAILURE TO COMPLY WITH THE ABOVE WILL NOT FORM A BASIS FOR ANY CLAIM.
3. PROVIDE AND PLACE BRACING OR SHORING AND BE RESPONSIBLE FOR THE SAFETY AND SUPPORT OF ALL STRUCTURES. BE LIABLE FOR ANY SUCH MOVEMENT AND ANY RESULTING DAMAGE OR INJURY CAUSED.
4. THE CONTRACTOR SHALL ARRANGE AND PAY FOR ALL PERMITS, NOTICES AND INSPECTIONS NECESSARY FOR THE PROPER EXECUTION AND COMPLETION OF DEMOLITION.
5. ASBESTOS: DEMOLITION OF SPRAY-ON, TROWEL APPLIED OR ANY OTHER COMPONENT CONTAINING ASBESTOS CAN BE HAZARDOUS TO HEALTH. SHOULD ANY MATERIAL SUSPECTED TO CONTAIN ASBESTOS BE FOUND WITHIN THE DEMOLITION SCOPE OF WORK, STOP WORK AND NOTIFY THE ENGINEER IMMEDIATELY. DO NOT PROCEED UNTIL WRITTEN INSTRUCTIONS HAVE BEEN RECEIVED.
6. ARRANGE FOR AND EXPEDITE THE REROUTING, DISCONNECTING, CAPPING AND PLUGGING OF GAS, WATER, SEWER, ELECTRICITY, TELEPHONE AND OTHER SERVICES AFFECTED BY THE DEMOLITION WORK.
7. PLACE MARKERS TO INDICATE LOCATION OF DISCONNECTED SERVICES.
8. EXCEPT WHERE NOTED OTHERWISE, WASTE MATERIALS BEING DEMOLISHED BECOME THE PROPERTY OF THE CONTRACTOR. IMMEDIATELY REMOVE FROM SITE, AND DISPOSE OF MATERIALS IN AN APPROVED LOCATION AND MANNER. CAREFULLY REMOVE ALL EXISTING LIGHT FIXTURES, CONDUIT, PIPING, HANGERS, AND ANY OTHER EQUIPMENT FROM THE AFFECTED CEILING. STORE UNTIL RECONSTRUCTION IS COMPLETE, THEN REINSTALL ALL FIXTURES AND EQUIPMENT AT OR NEAR FORMER LOCATIONS.
10. ENSURE THAT ANY LIGHTING, PIPING OR OTHER EQUIPMENT WHICH IS DISCONNECTED DURING THE WORK, IS RECONNECTED AND OPERATIONAL AT PROJECT COMPLETION.
11. REMOVE EXISTING BUILT-UP ROOF ASSEMBLY IN THE AREA NOTED ON THE PLAN, INCLUDING PLYWOOD DECKING, JOISTS, GYPSUM DRYWALL CEILING AND ANY ADJACENT PARAPET FLASHINGS AFFECTED BY THE WORK.
12. DO NOT REMOVE LEDGER/NAILER MOUNTED ON THE MASONRY WALL.
13. DO NOT REMOVE CONCRETE MASONRY PARAPET.
14. COVER THE EXPOSED ROOF DECK TO PROTECT FROM THE WEATHER AND WATER INFILTRATION UNTIL NEW ROOFING BEGINS. (RE-ROOFING TO BE DONE UNDER SEPARATE CONTRACT)
15. DEMOLISH THE STRUCTURES AND APPURTANCES TO EXTENT INDICATED ON THE DRAWINGS AND SPECIFICATIONS, AS REQUIRED TO ACCOMMODATE THE NEW WORK. CARRY OUT DEMOLITION IN AN ORDERLY AND CAREFUL MANNER.
16. CONTAMINATED, VERMIN INFESTED, DANGEROUS OR HAZARDOUS MATERIALS ENCOUNTERED ARE TO BE REMOVED FROM THE SITE AND DISPOSED BY SAFE, APPROVED MEANS, SO AS NOT TO ENDANGER THE HEALTH OF THE WORKERS OR THE PUBLIC.
18. UPON COMPLETION OF THE DEMOLITION WORK, LEAVE THE SITE IN A CONDITION ACCEPTABLE TO THE ENGINEER, AND TO PERMIT THE INSTALLATION OF THE NEW HVAC UNIT, AND THE RECONSTRUCTION OF THE ROOF ASSEMBLY.

DIVISION 03 - CONCRETE

- 1. CONCRETE TO CSA CAN3-A23.1
HOUSEKEEPING PAD: 25MPa CONCRETE, TYPE 10 CEMENT, MAXIMUM ARREGATE SIZE 20mm, SLUMP 80mm ±20mm.
REINFORCING STEEL: TO CSA G30.12 GRADE 400
CLEAR COVER TO REINFORCEMENT:
.1 SLABS, WALLS AND JOISTS (35M AND SMALLER) 20mm
CAST-IN-PLACE CONCRETE
.1 PLACE AND CURE CONCRETE IN ACCORDANCE WITH CSA CAN3-A23.1
.2 USE OF CALCIUM CHLORIDE IS NOT PERMITTED.
.3 IMMEDIATELY AFTER FINISHING HOUSEKEEPING PAD, APPLY A CURING/ SEALING COMPOUND (STERNSON 'RITECURE' OR APPROVED EQUIVALENT) IN ACCORDANCE WITH THE MANUFACTURERS' WRITTEN INSTRUCTIONS.

DIVISION 04 - MASONRY

- 1. ANY MASONRY WHICH IS DAMAGED AND REQUIRES REPAIR DURING THE COURSE OF THE WORK, SHALL BE REPAIRED IN ACCORDANCE WITH CSA CAN3-A371, MASONRY CONSTRUCTION FOR BUILDINGS.

DIVISION 06 - WOOD AND PLASTICS

- ALL LUMBER TO HAVE GRADE STAMP CLEARLY VISIBLE OF AND AGENCY CERTIFIED BY THE CANADIAN LUMBER STANDARDS ADMINISTRATION BOARD. DIMENSION LUMBER TO CSA 0141, AND TO THE NATIONAL LUMBER GRADES AUTHORITY, STANDARD GRADING RULES. MOISTURE CONTENT MAX. 19% FOR EXTERIOR AND MAX. 12% OR LESS FOR INTERIOR WORK.
JOISTS: TJI/321 AND TJI/424, 9 1/2" DEEP, AND 38x235 D.FIR OR BETTER FOR STRAPING TO EXISTING JOISTS, BLOCKING AND DOUBLE HEADERS. PLYWOOD: EXTERIOR GRADE, D.FIR SHEATHING FOR ROOF DECK DO ROUGH CARPENTRY IN ACCORDANCE WITH CSA CAN3-086.1 AND ABC 1990.
NAILS, SPIKES AND STAPLES TO BE GALVANIZED TO CSA B111. BOLTS, NUTS, WASHERS, LAGS, PINS, SCREWS, ETC. TO BE GALVANIZED TO CSA G164.
USE TJI TOP MOUNT HANGERS FOR ALL TJI JOISTS AND DOUBLE HEADERS. PLACE PLYWOOD SHEATHING WITH END JOISTS STAGGERED, SECURING SHEET EDGES OVER SOLID BEARING. USE 'H' CLIPS TO ROOF SHEATHING BETWEEN JOISTS.
PROTECT BUILDING AND NEWWOOD ROOF STRUCTURE FROM WEATHER AND WATER INFILTRATION. NEW ROOFING MEMBRANE WILL BE INSTALLED UNDER A SEPARATE CONTRACT.
WHEN REMOVING EXISTING WOOD ROOF DECKING, ENSURE THAT ALL REMAINING PLYWOOD EDGES RETAIN EDGE SUPPORT. REMOVAL OF ONLY FULL SIZE PLYWOOD SHEETS IS RECOMMENDED. WHERE PLYWOOD SHEETS ARE CUT, ENSURE CUTS ARE MADE AT CENTERS OF JOISTS AND BLOCKING.
WHEN INSTALLING NEW PLYWOOD SHEETS, ENSURE ALL EDGES OF PLYWOOD ARE SUPPORTED BY JOISTS OR SOLID BLOCKING.

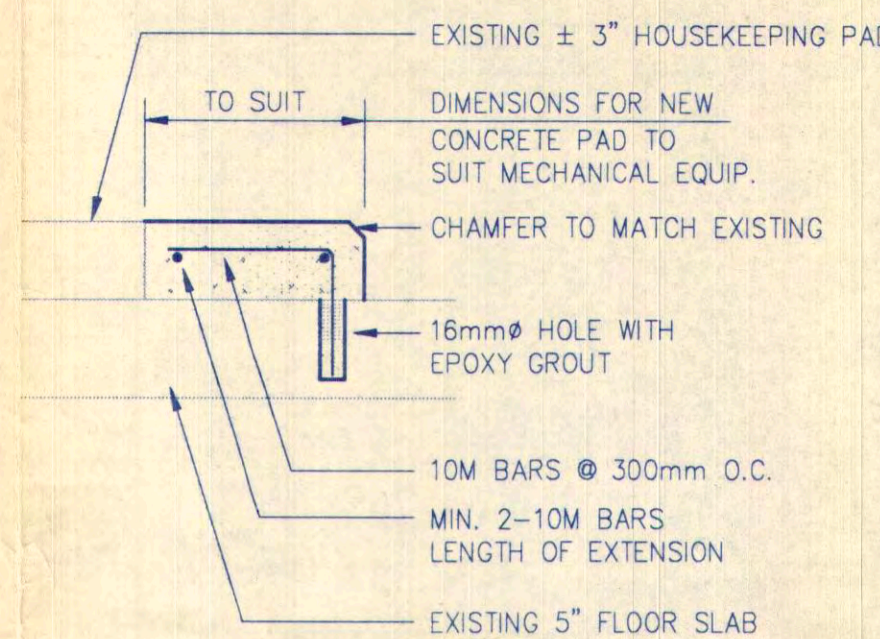
DIVISION 07 - THERMAL AND MOISTURE PROTECTION

- APPLY SEALANTS TO MANUFACTURERS WRITTEN INSTRUCTIONS, USING A GUN OF PROPER NOZZLE SIZE/TYPE, USING SUFFICIENT PRESSURE TO FILL VOIDS AND JOINTS SOLID. SUPERFICIAL POINTING WITH SKIN BEAD IS NOT ACCEPTABLE. FORM SURFACE WITH FULL BEAD, FREE FROM RIDGES, SACS, WRINKLES, AIR POCKETS AND EMBEDDED IMPURITIES, NEATLY TOOLED TO A SLIGHT CONCAVE JOINT.
PURPOSE MADE CAULKING TO BE APPLIED AT ALL PENETRATIONS THROUGH FIRE SEPARATIONS, PROVIDING VAPOUR TIGHT SEAL.
PURPOSE MADE CAULKING TO BE APPLIED AT ALL PENETRATIONS THROUGH EXTERIOR WALL AND ROOF ASSEMBLIES TO PREVENT WATER INFILTRATION.

DIVISION 09 - FINISHES

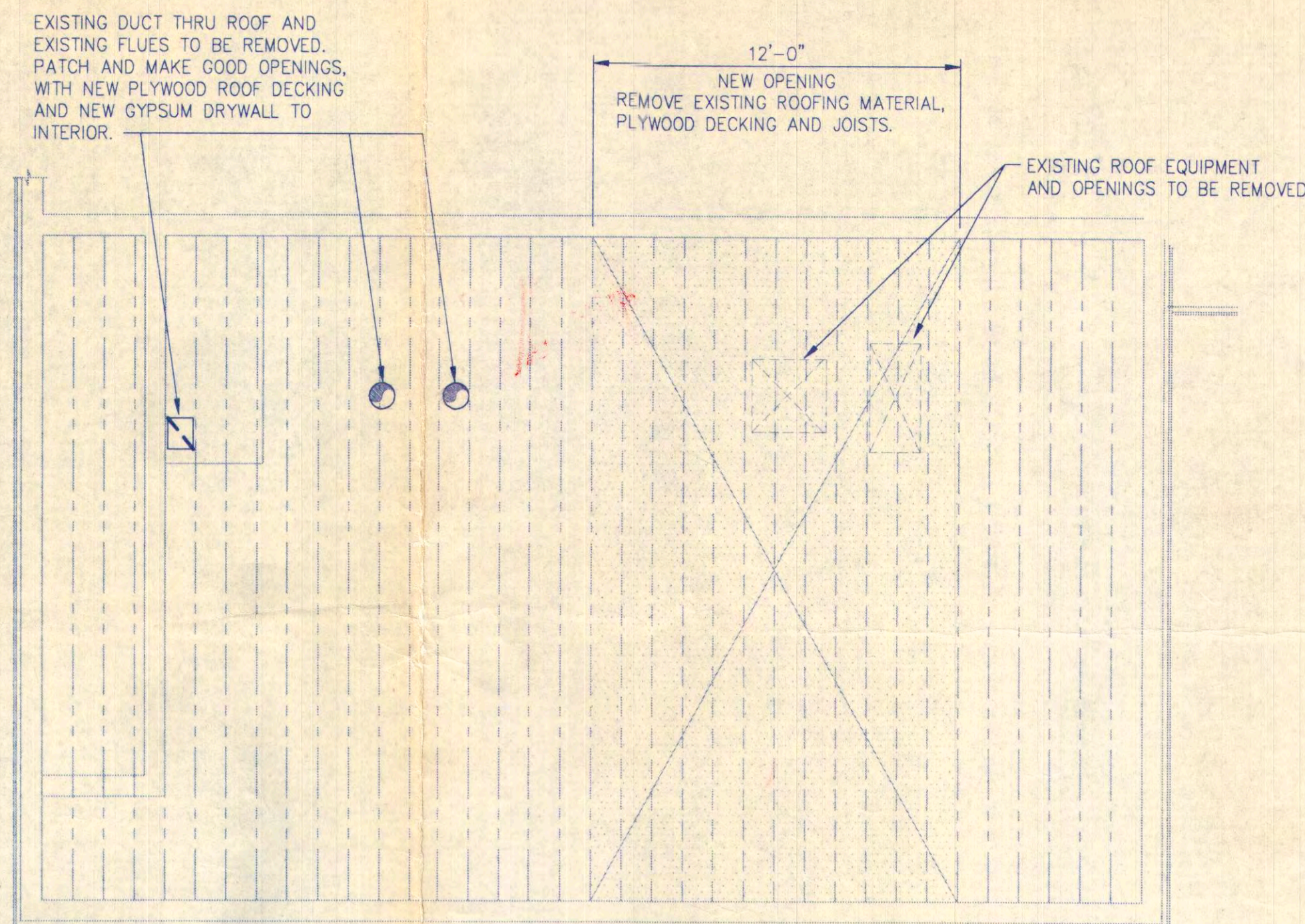
- GYPSUM DRYWALL TO CSA A82.30 AND A32.31. GYPSUM WALLBOARD APPLIED TO CEILING SHALL CONFORM TO CSA A82.27, PLAIN, FIRE RESISTANT TYPE X, 1219mm WIDE BY LONGEST PRACTICAL LENGTH, BY 15.9mm (5/8") THICK, ENDS CUT SQUARE, EDGES TAPERED, WITH PAPER FACES.
SCREWS: TYPE S DRYWALL SCREWS, 65mm (2 1/2") LONG, SPACED 200mm O.C. ALONG THE EDGES AND ENDS OF THE BOARDS, AND 300mm O.C. IN THE FIELD OF THE BOARD, SELF TAPPING, COUNTERSUNK HEAD, RUST RESISTANT TYPE. ALL SCREW HEADS COVERED WITH JOINT COMPOUND, PERFORATED PAPER TAPE 50mm WIDE, WITH PREFILLER AND JOINT FILLER COMPOUND.
GYPSUM WALLBOARD SYSTEM AND MATERIALS SHALL BE AS MANUFACTURED BY DOMTAR, WESTROC, CANADIAN GYPSUM OR EQUIVALENT. ALL FINISHED WALLBOARD SHALL BE PLUMB, LEVEL AND TRUE. ERECT WALLBOARD AND TAPE JOINTS TO CSA A82.31. ALL JOINTS TO OCCUR OVER SUPPORTS. ALLOW MAX. 3mm SPACE BETWEEN CUT ENDS.
MIX AND APPLY JOINT COMPOUND IN ACCORDANCE WITH MANUFACTURERS SPECIFICATIONS AND WRITTEN INSTRUCTIONS. FILL ALL GAPS AND SCREW DEPRESSIONS IN 3 COATS OF JOINT COMPOUND. FEATHER ALL COATS OF JOINT COMPOUND ONTO ADJOINING SURFACES. SAND AND LEAVE READY TO RECEIVE PAINTED FINISH BY OTHERS.

Aquaplex 1997 Drawings



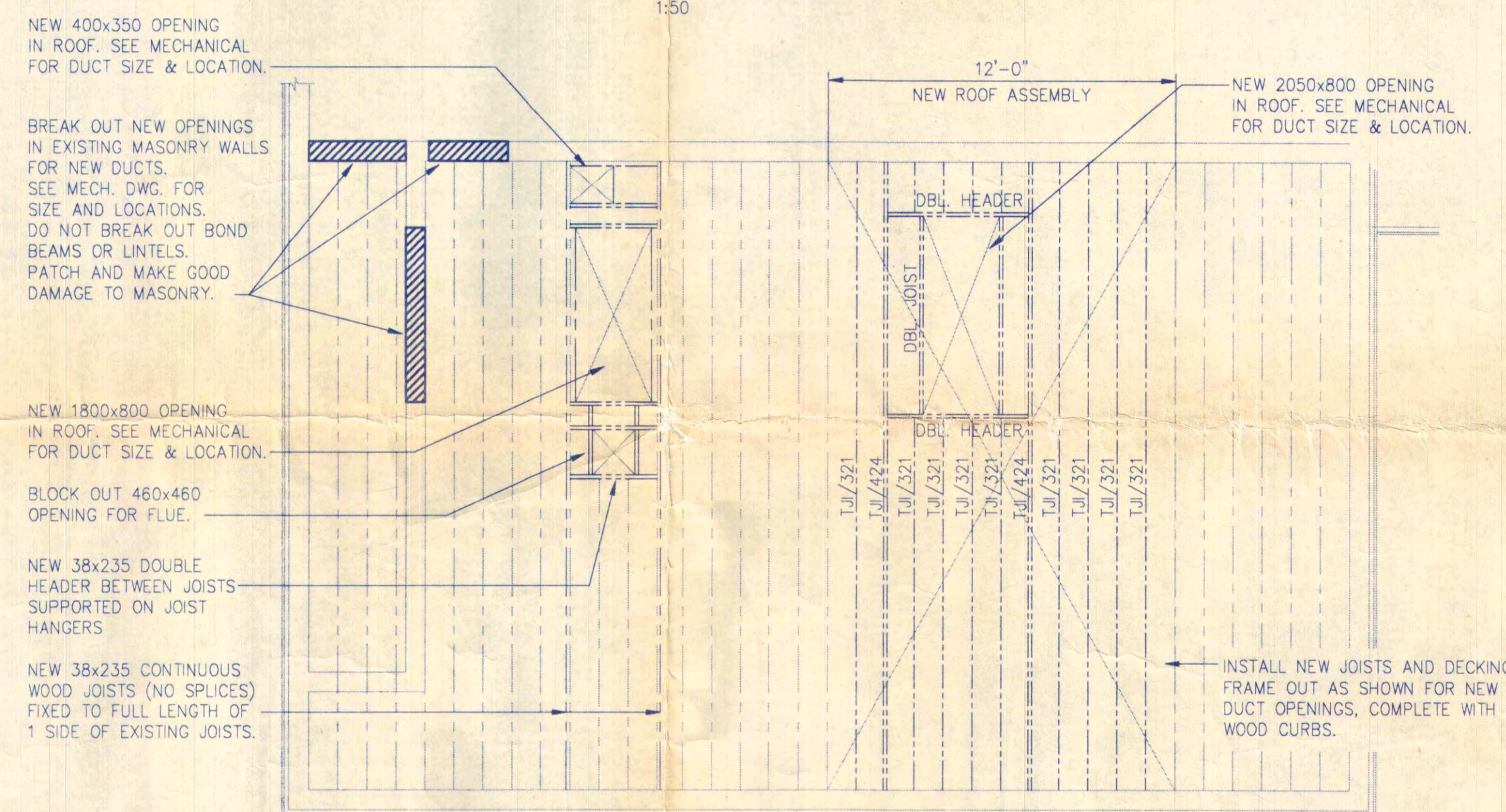
DETAIL AT HOUSEKEEPING PAD

1:5



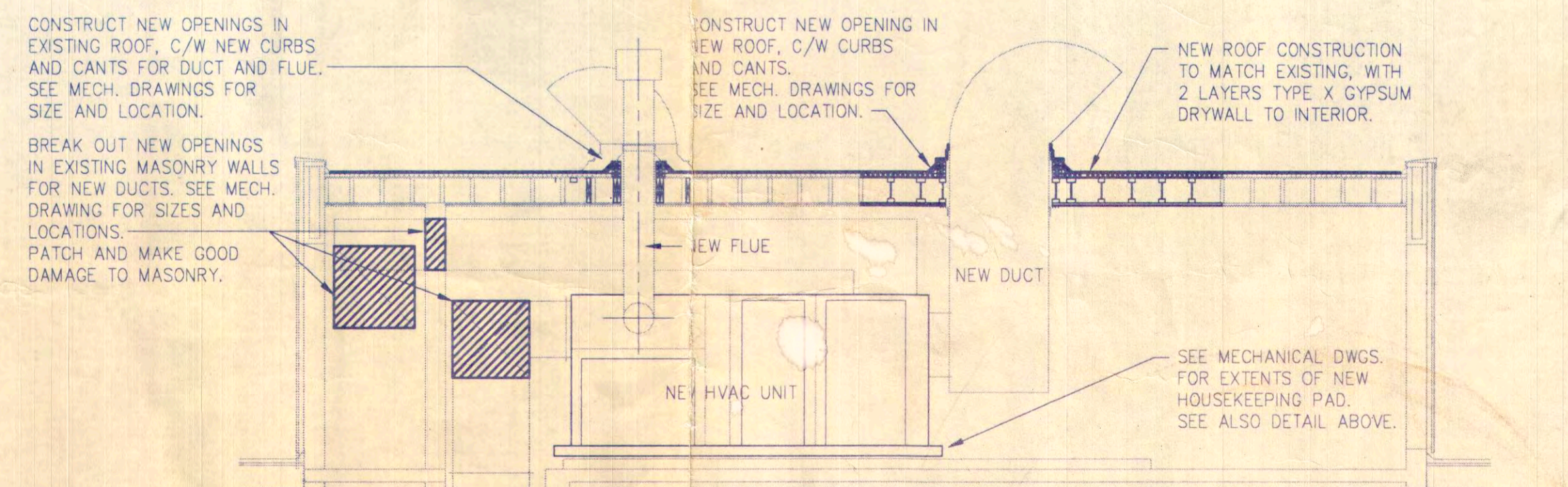
ROOF PLAN - EXISTING & DEMOLITION

1:50



ROOF PLAN - NEW ROOF FRAMING

1:50



SECTION THRU MECHANICAL ROOM

1:50

COMMENTS:

Handwritten signatures and dates: October 3, 1997 and Oct 3/97.

Revision table with columns: REV, Y, M, D, ISSUE/REVISION DESCRIPTION, DRN, DES, CHK, ENG.

UMA Engineering Ltd. Engineers & Planners

CITY of DRUMHELLER, ALBERTA

DRUMHELLER AQUAPLEX

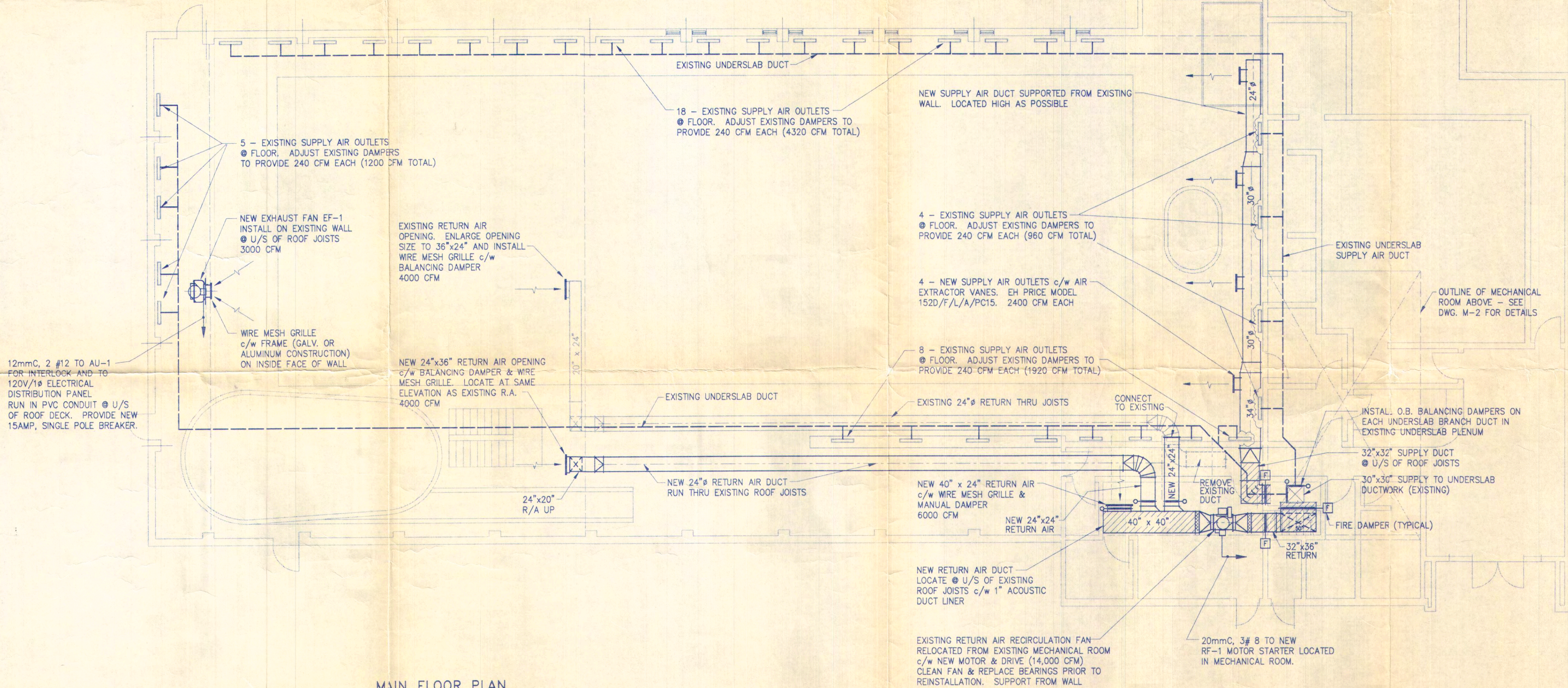
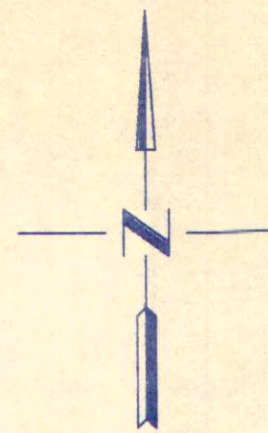
HEATING & VENTILATING SYSTEM UPGRADE ROOF MODIFICATIONS & SPECIFICATIONS

Project information table with columns: PROJECT No., CODE, DRAWING No., ISS/REV.

1 SIZE 841 x 594 mm

Plot Setup

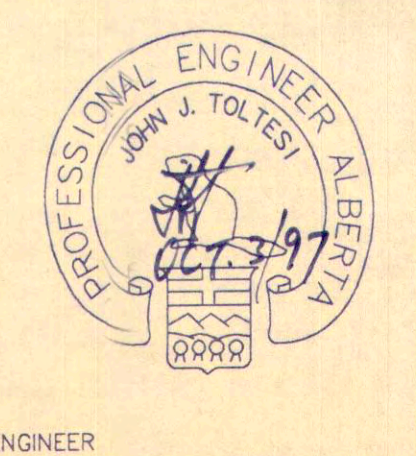
File No.: S-1 Plot Scale: 1:1



MAIN FLOOR PLAN
SCALE: 1 : 100

COMMENTS:

PERMIT TO PRACTICE
UMA ENGINEERING LTD.
Signature: *[Signature]*
Date: October 3, 1997
PERMIT NUMBER: P 329
The Association of Professional Engineers,
Geologists and Geophysicists of Alberta



0	97	10	03	FOR TENDER & CONSTRUCTION	RAO	RAO	JJT	JJT
REV	Y	M	D	ISSUE/REVISION DESCRIPTION	DRN	DES	CHK	ENG

uma UMA Engineering Ltd.
Engineers & Planners

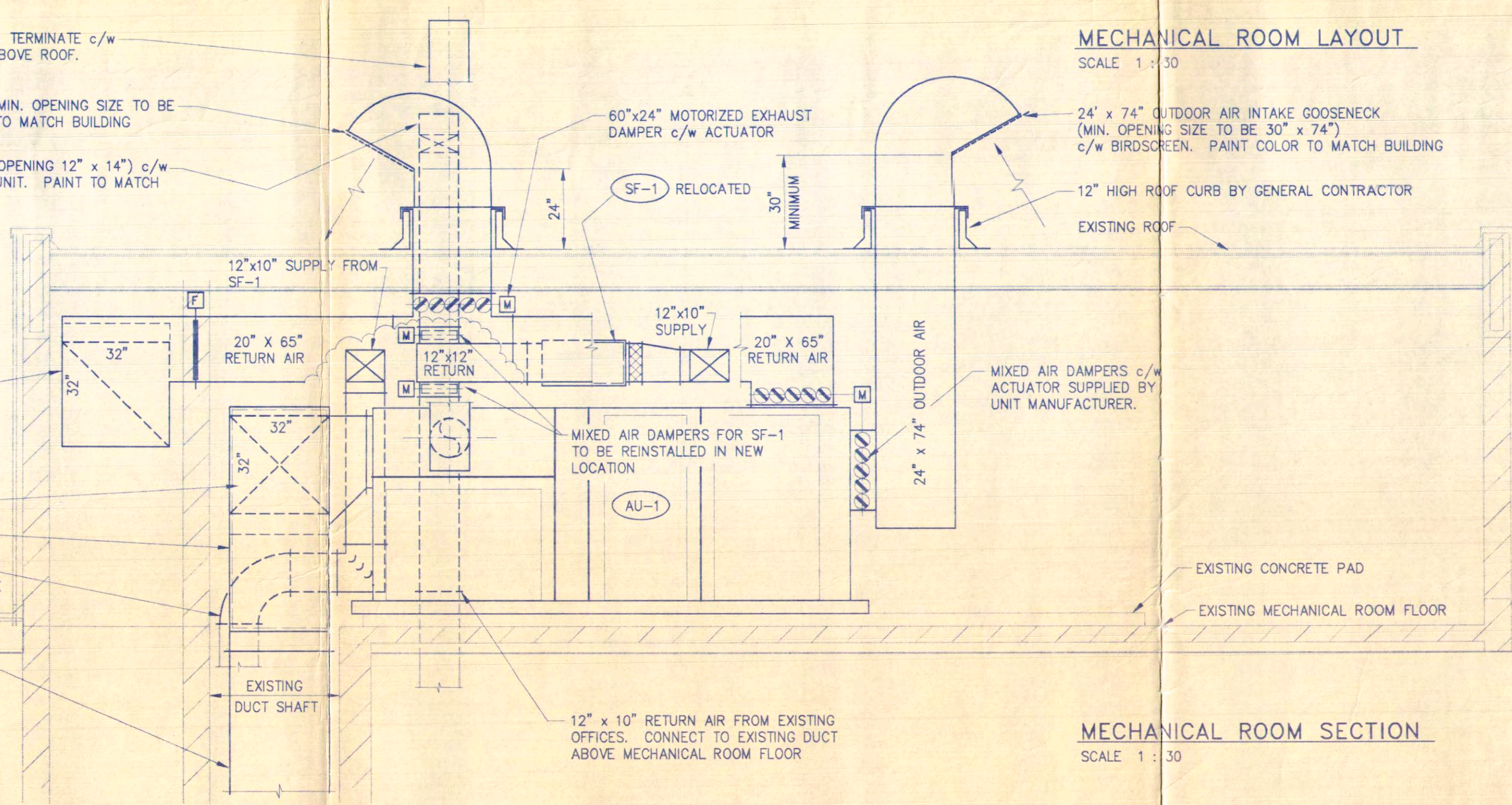
CITY OF DRUMHELLER			
DRUMHELLER AQUAPLEX			
HEATING & VENTILATING SYSTEM UPGRADE			
MAIN FLOOR PLAN			
PROJECT No. 0223-256-00 CALGARY, ALBERTA	CODE CD-35-A1	DRAWING No. M-1	ISS./REV 0

MECHANICAL SPECIFICATIONS

- GENERAL
 - THE GENERAL CONDITIONS AND CONTRACT DOCUMENTS SHALL APPLY TO AND FORM AN INTEGRAL PART OF THIS DIVISION OF THE SPECIFICATIONS.
 - ALL WORK SHALL BE IN ACCORDANCE WITH ALL LOCAL, PROVINCIAL AND FEDERAL CODES AND REGULATIONS. ALL WORK SHALL BE PERFORMED BY QUALIFIED TRADESMEN, TESTED AND UNDER WARRANTY FOR A PERIOD OF ONE YEAR FROM ACCEPTANCE DATE OF MECHANICAL EQUIPMENT AND WORK.
 - FILE ALL PLANS, OBTAIN ALL PERMITS AND PAY ALL FEES AND ARRANGE FOR ALL INSPECTIONS BY GOVERNING AUTHORITIES AND PROVIDE OWNER WITH A CERTIFICATE OF ALL SUCH INSPECTIONS PRIOR TO FINAL PAYMENT.
 - AT NO ADDITIONAL COST TO THE OWNER, LOCATE EXISTING SERVICE LINES PRIOR TO COMMENCEMENT OF CONSTRUCTION TO ENSURE NO CONFLICTS WILL OCCUR.
 - ALL WORK TO BE CARRIED OUT UNDER THE DIRECTION OF A COMPETENT FOREMAN AND IN FULL COOPERATION WITH ALL OTHER TRADES AND CONTRACTORS ON SITE.
 - WHERE DISCREPANCIES OCCUR BETWEEN DRAWINGS AND SPECIFICATIONS THEY SHALL BE CLARIFIED BY THE ENGINEER. IF FAILURE TO DO SO RESULTING IN WORK DONE INCORRECTLY, ALL CORRECTIONS SHALL BE MADE AS DIRECTED BY THE ENGINEER AT NO COST TO THE OWNER.
 - MINOR DETAILS NOT USUALLY SHOWN OR SPECIFIED, BUT NECESSARY FOR THE PROPER INSTALLATION AND OPERATION OF THE WORK, SHALL BE INCLUDED IN THE WORK AS IF HEREIN SPECIFIED OR SHOWN.
 - ALL DRAWINGS ARE DIAGRAMMATIC AND INDICATE THE GENERAL ARRANGEMENT OF SYSTEMS AND WORK INCLUDED IN THE CONTRACT. DO NOT SCALE THE DRAWINGS.
 - FOLLOW DRAWINGS AS CLOSELY AS POSSIBLE IN LAYING OUT WORK AND CHECK BUILDING TO VERIFY SPACES IN WHICH WORK WILL BE INSTALLED. MAINTAIN MAXIMUM HEADROOM AND SPACE CONDITIONS AT ALL POINTS.
 - IF DIRECTED BY THE ENGINEER, MAKE WITHOUT EXTRA COST, REASONABLE MODIFICATIONS IN THE LAYOUT AS NEEDED TO PREVENT CONFLICTS WITH EXISTING EQUIPMENT, DUCTWORK OR PIPING OR FOR PROPER EXECUTION OF THE WORK. THIS SHALL INCLUDE BUT NOT NECESSARILY BE LIMITED TO, OFFSETS IN PIPING OR DUCTS, TRANSFORMATION IN DUCTWORK AND RELOCATION OF DUCTS OR PIPING AS REQUIRED TO SUIT ON SITE JOB CONDITIONS.
- DUCTWORK
 - FABRICATE AND INSTALL DUCTWORK IN ACCORDANCE WITH ASHRAE STANDARDS AND SMACNA DUCT MANUALS. CONSTRUCT DUCTWORK OF GALVANIZED STEEL OR ALUMINUM WITH MINIMUM MATERIAL THICKNESSES SHALL CONFORM TO THE REQUIREMENTS OF THE SMACNA DUCT CONSTRUCTION STANDARDS.
 - FABRICATE PLENUMS TO CONFIGURATIONS INDICATED ON THE DRAWINGS. CONSTRUCT PLENUMS OF HEAVY GAUGE GALVANIZED STEEL PANELS JOINED BY STANDING SEAMS. REINFORCE WITH ANGLES AND PROVIDE BRACING AND STIFFENING TO ENSURE RIGIDITY.
- NATURAL GAS PIPE AND PIPE FITTINGS
 - ALL MATERIALS SHALL BE APPROVED FOR INSTALLATION BY GOV ERNING AUTHORITIES.
 - ABOVEGROUND NATURAL GAS PIPING SHALL BE SCHEDULE 40 BLACK STEEL TO ASTM A53 GR. B WITH 150# MALLEABLE IRON THREADED FITTINGS. INSTALLATION OF ALL PIPE AND FITTINGS SHALL BE IN ACCORDANCE WITH CAN/CSA B149.1.
- DUCT INSULATION
 - 1" FIBREGLAS, RIGID COATED INTERNAL ACOUSTIC INSULATION AND IN DUCTS SHOWN HATCHED ON THE DRAWINGS.
 - 2" FIBREGLAS PF-336 RIGID FOIL FACED INSULATION ON DUCTS AND PLENUMS WITHIN 10' OF OUTDOOR AIR INTAKE OR EXHAUST HOODS.
 - 1" FIBREGLAS PF-336 RIGID FOIL FACED INSULATION ON DUCTS LOCATED WITHIN THE MECHANICAL ROOM.
 - RECOVER ALL EXPOSED INSULATION WITH CANVAS JACKET. LEAVE FINISH SUITABLE FOR PAINTING.
- BALANCING
 - PROVIDE THE SERVICES OF AN INDEPENDENT BALANCING AGENCY TO ADJUST EQUIPMENT AND AIR INLETS AND OUTLETS TO DESIGN QUANTITIES.
 - PROVIDE A COMPLETE WRITTEN REPORT SHOWING OUTLET AIR QUANTITIES, AND EQUIPMENT PERFORMANCE WITH SYSTEM SCHEMATIC DIAGRAMS.
 - ADJUST GRILLES AND DIFFUSERS TO MINIMIZE DRAFTS AND NOISE.
- VENTILATION SPECIALTIES
 - PROVIDE AS SHOWN ON THE DRAWINGS AND AS REQUIRED FOR PROPER SYSTEM OPERATION OR AS REQUIRED TO MEET REQUIREMENTS OF THE ALBERTA BUILDING CODE.
 - BALANCING DAMPERS: E. H. PRICE VCS3
 - DUCT ACCESS DOORS: NAILOR HART 0810-00
 - AIR EXTRACTORS: E. H. PRICE AE-25 C/W NO. 1 ADJUSTING LEVER.
- AIR HANDLING UNIT AU-1
 - INSTALL INDOOR, HORIZONTAL, NATURAL GAS FIRED VENTILATION UNIT CONSISTING OF INDIRECT FIRED BURNER, STAINLESS STEEL DRUM AND TUBE HEAT EXCHANGER, BLOWER, FILTER-MIXING BOX WITH AUTOMATIC DAMPERS, CONTROLS, ETC. COMPLETELY PREWIRED AND TESTED READY FOR CONNECTION TO DUCTWORK AND REMOTE ELECTRICAL DEVICES AS SPECIFIED HEREIN AND AS INDICATED ON THE DRAWINGS.
 - CAPACITY: SUPPLY FAN CAPABLE OF DELIVERING 17,000 CFM @ 2" W.C. EXTERNAL STATIC PRESSURE WHEN DRIVEN BY A 15 HP, 208 VOLT, 3 PHASE, TEFC MOTOR. MINIMUM HEATING OUTPUT CAPACITY SHALL BE 1,106,000 BTUH.
 - ACCESSORIES: STAINLESS STEEL HEAT EXCHANGER, PROPANE GAS PRESSURE REGULATOR, MODULATING GAS BURNER WITH ELECTRONIC SPARK IGNITION SYSTEM AND DISCHARGE TEMPERATURE CONTROL WITH OVERRIDING SPACE TEMPERATURE CONTROL AND SAFETY CONTROLS, TEFC MOTOR, FILTER RACK C/W 50 MM THICK DISPOSAL FILTERS IN PERMANENT METAL FRAMES, MOTORIZED OUTDOOR AND RETURN AIR DAMPERS (ACTUATORS BY CONTROLS CONTRACTOR), ETC. AIR HANDLING UNIT SHALL BE COMPLETELY PREWIRED WITH SUPPLY FAN MOTOR STARTER, CONTROL TRANSFORMER, ETC. REQUIRING ONLY FIELD CONNECTION OF REMOTE WIRING AND A REMOTE CONTROL PANEL TO A NUMBERED TERMINAL STRIP, LOCATED IN THE UNIT CONTROL PANEL.
 - PROVIDE AIR HANDLING UNIT IN A MINIMUM OF 2 SECTIONS TO ALLOW FOR INSTALLATION THROUGH THE ROOF OPENING INDICATED ON THE PLANS.

MECHANICAL ROOM LAYOUT

SCALE 1 : 30

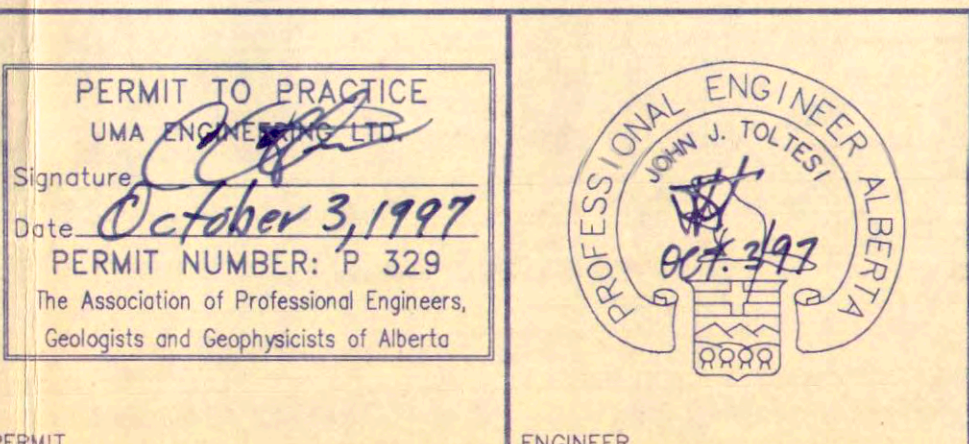


MECHANICAL ROOM SECTION

SCALE 1 : 30

COMMENTS:

PERMIT TO PRACTICE
 UMA ENGINEERING LTD.
 Signature: [Signature]
 Date: October 3, 1997
 PERMIT NUMBER: P 329
 The Association of Professional Engineers,
 Geologists and Geophysicists of Alberta



0	97	10	03	FOR TENDER & CONSTRUCTION	RAO	RAO	JJT	JJT
REV.	Y.	M.	D.	ISSUE/REVISION DESCRIPTION	DRN	DES	CHK	ENG

uma UMA Engineering Ltd.
 Engineers & Planners

CITY OF DRUMHELLER
 DRUMHELLER AQUAPLEX
 HEATING & VENTILATING SYSTEM UPGRADE
 MECHANICAL ROOM LAYOUT & DETAILS

PROJECT No. 0223-256-00 CALGARY, ALBERTA	CODE CD-35-A1	DRAWING No. M-2	ISS/REV 0
--	------------------	--------------------	--------------