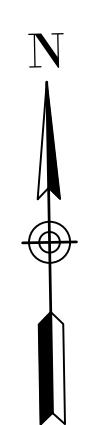
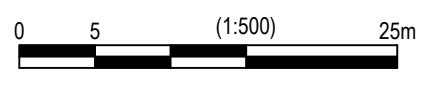


LEGEND

- - - LIMIT OF CONSTRUCTION BOUNDARY
- + EXISTING TREE TO REMAIN
- X TREES ON PRIVATE LAND TO BE CLEARED FOR 2023 CONSTRUCTION
- + TREES ON PUBLIC LAND TO BE CLEARED FOR 2023 CONSTRUCTION



PLAN
Scale 1:500



IBI IBI GROUP
3rd Floor - 227 11 Avenue SW
Calgary AB T2R 1R9 Canada
tel 403 270 5600 fax 403 270 5610
ibigroup.com

Seal
The Alberta Association of Landscape Architects
Ernie Webster

| Rev | Date | Des | Dwn | Chk | Description | Rev | Date | Des | Dwn | Chk | Description |
|-----|------------|-----|-----|-----|-------------------|-----|------|-----|-----|-----|-------------|
| 0 | 2022-12-12 | BB | MD | EW | ISSUED FOR TENDER | | | | | | |

**TOWN OF DRUMHELLER
NORTH DRUMHELLER**

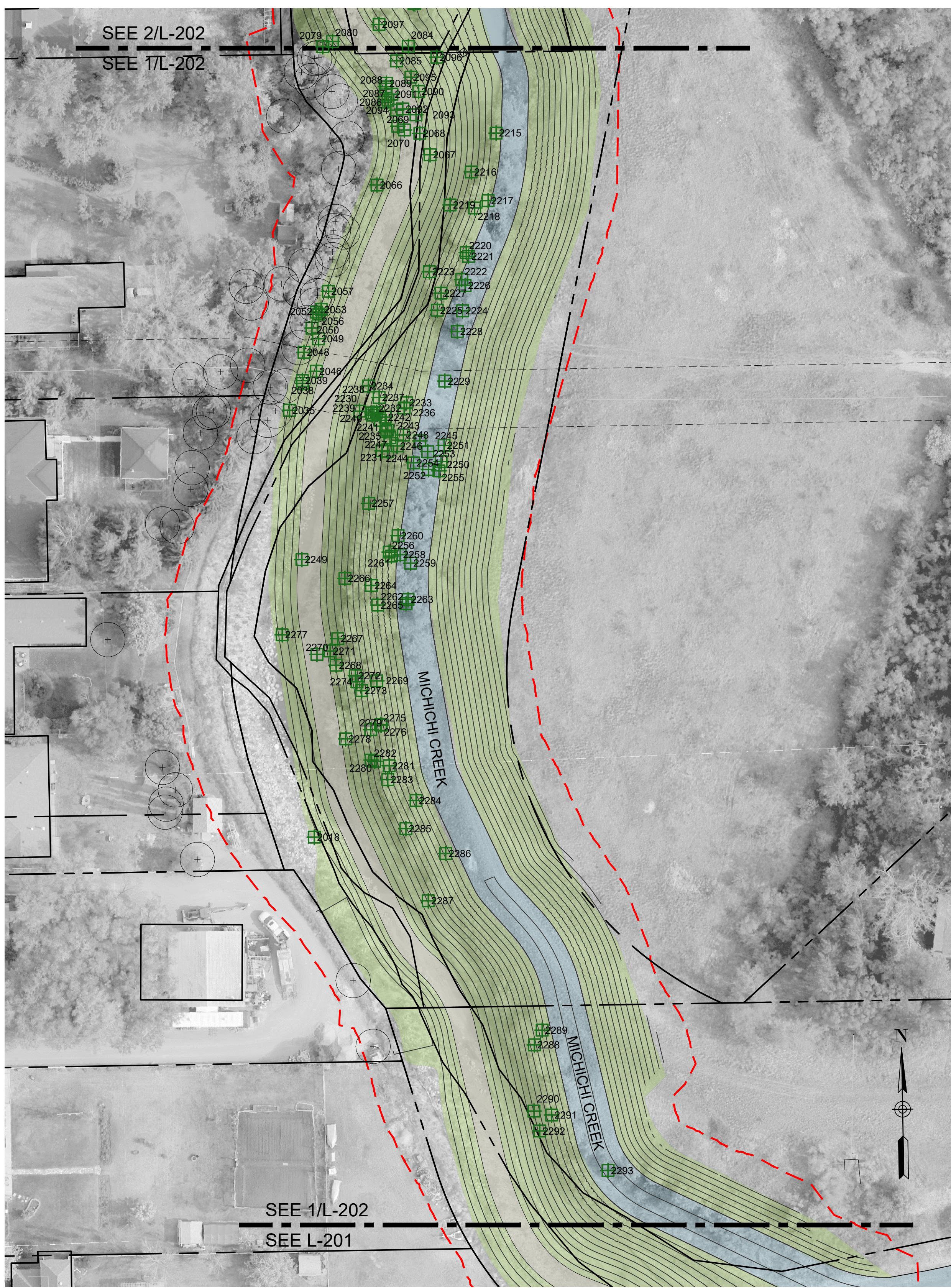
**HOSPITAL BERM EXTENSION & MICHICHI CREEK WEST BERM
TREE CLEARING PLAN**

Project No. **133142** Drawing No. **L-201** Rev. **0**
Group **LANDSCAPE**

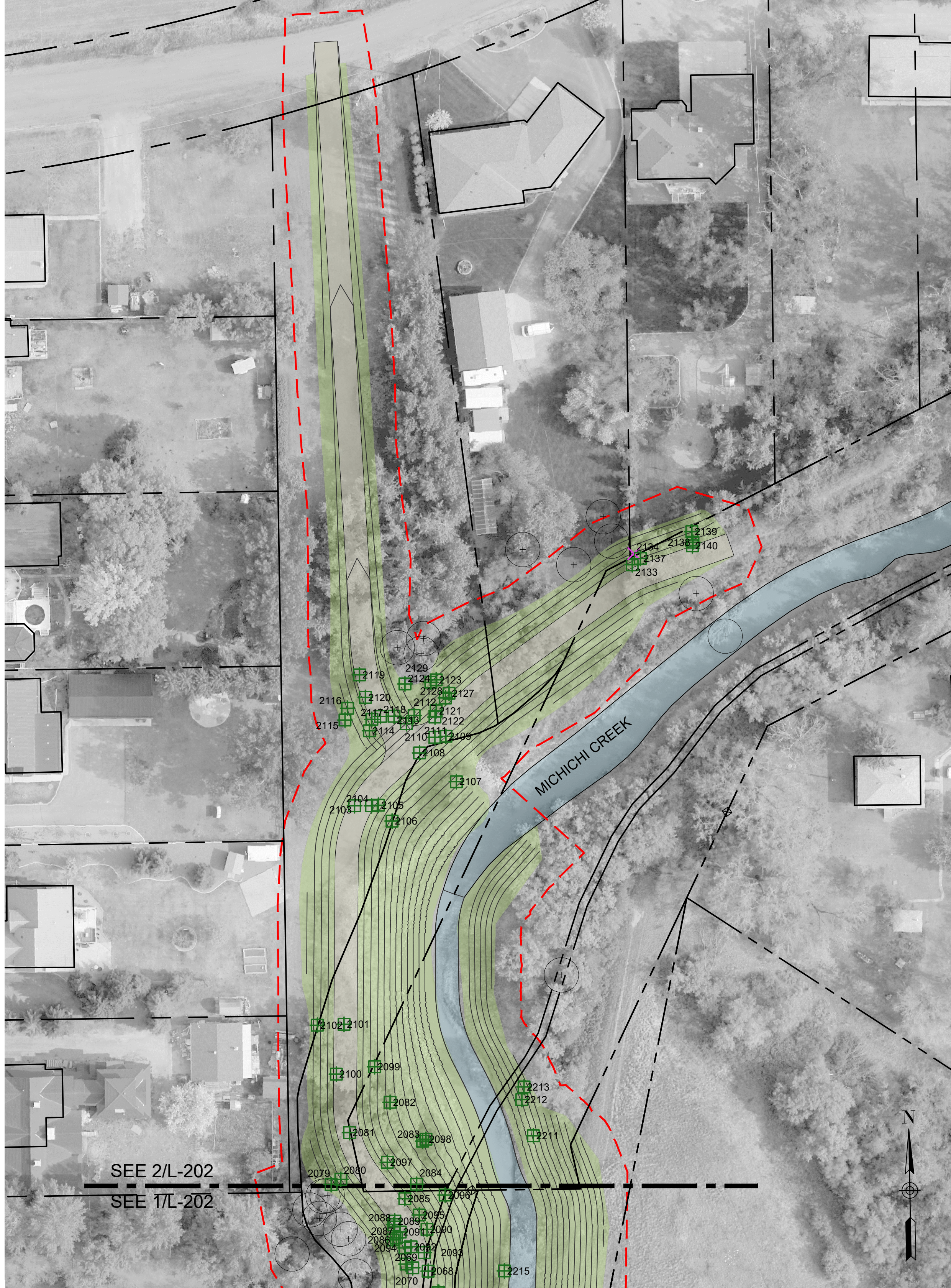
SAVED: 2022/12/12 10:58 AM

Paper Size = ANSI D
At Full Size, this border measures 520 mm x 800 mm

100
50
0
millimeters



PLAN 1
Scale 1:500



PLAN 2
Scale 1:500

| LEGEND | |
|--------|---|
| | LIMIT OF CONSTRUCTION BOUNDARY |
| | EXISTING TREE TO REMAIN |
| | TREES ON PRIVATE LAND TO BE CLEARED FOR 2023 CONSTRUCTION |
| | TREES ON PUBLIC LAND TO BE CLEARED FOR 2023 CONSTRUCTION |



IBI IBI GROUP
3rd Floor - 227 11 Avenue SW
Calgary AB T2R 1R9 Canada
tel 403 270 5600 fax 403 270 5610
ibigroup.com

The Alberta Association of Landscape Architects
Ernie J. Webster

| Rev | Date | Des | Dwn | Chk | Description |
|-----|------------|-----|-----|-----|-------------------|
| 0 | 2022-12-12 | BB | MD | EW | ISSUED FOR TENDER |

| Rev | Date | Des | Dwn | Chk | Description |
|-----|------|-----|-----|-----|-------------|
| | | | | | |

| | | | |
|--|-----------|-------------|----------------|
| TOWN OF DRUMHELLER NORTH DRUMHELLER | | | |
| HOSPITAL BERM EXTENSION & MICHICHI CREEK WEST BERM TREE CLEARING PLAN | | | |
| Project No. | 133142 | Drawing No. | |
| Group | LANDSCAPE | | |
| | | | L-202 0 |

**HOSPITAL BERM EXTENSION & MICHICHI CREEK
WEST BERM - TREES TO BE REMOVED**

TREE SURVEY RECEIVED FROM TOWN OF DRUMHELLER, OCTOBER 2022.

- TOTAL TREES REMOVED: 198
- TREES ON PUBLIC LANDS: 162
- TREES ON PRIVATE LANDS: 36

| Tree ID | Species | Height (m) | DBH (cm) | Health | Public/Private |
|---------|-----------------------|------------|----------|--------|----------------|
| 2002 | Manitoba Maple | 6 | 11.8 | 2 | Private |
| 2007 | Balsam Poplar | 16 | 77.6 | 2 | Private |
| 2008 | Balsam Poplar | 15 | 48.8 | 2 | Private |
| 2009 | Balsam Poplar (bunch) | 0 | 74.2 | 0 | Private |
| 2010 | Balsam Poplar (bunch) | 0 | 47.8 | 0 | Private |
| 2011 | Balsam Pop (bunch) | 0 | 47.2 | 0 | Private |
| 2012 | Balsam Poplar (bunch) | 0 | 45 | 0 | Private |
| 2013 | Balsam Pop (bunch) | 0 | 41.3 | 0 | Private |
| 2014 | Balsam Poplar | 14 | 50.8 | 2 | Private |
| 2018 | American Elm | 6 | 7.7 | 1 | Public |
| 2035 | American Elm | 11 | 39.7 | 1 | Public |
| 2038 | American Elm | 11 | 21.1 | 2 | Public |
| 2039 | American Elm | 11 | 28.1 | 1 | Public |
| 2046 | American Elm | 11 | 25.8 | 2 | Public |
| 2048 | American Elm | 10 | 20.1 | 3 | Public |
| 2049 | American Elm | 12 | 21.6 | 2 | Public |
| 2050 | American Elm | 9 | 17.2 | 2 | Public |
| 2052 | Manitoba Maple | 9 | 15.3 | 4 | Public |
| 2053 | American Elm | 10 | 21.5 | 2 | Public |
| 2056 | Am. Elm | 8 | 25.5 | 2 | Public |
| 2057 | Manitoba Maple | 11 | 32.2 | 1 | Public |
| 2066 | Manitoba Maple | 10 | 29 | 3 | Public |
| 2067 | Man. Maple | 5 | 10.2 | 3 | Public |
| 2068 | Man. Maple | 5 | 12.5 | 2 | Public |
| 2069 | Man. Maple | 8 | 17.8 | 2 | Public |
| 2070 | Man. Maple | 8 | 16.9 | 2 | Public |
| 2079 | Man Maple | 9 | 17.2 | 4 | Public |
| 2080 | Man. Maple | 13 | 32.7 | 3 | Public |
| 2081 | Man. Maple | 12 | 31.1 | 2 | Public |
| 2082 | Man. Maple | 13 | 25.6 | 1 | Public |
| 2083 | Man. Maple | 9 | 20.5 | 1 | Public |
| 2084 | Man. Maple | 8 | 10.8 | 1 | Public |
| 2085 | Man. Maple | 8 | 11.7 | 1 | Public |
| 2086 | Man. Maple | 6 | 9.6 | 1 | Public |
| 2087 | Man. Maple | 9 | 16.8 | 2 | Public |
| 2088 | Man. Maple | 9 | 16 | 1 | Public |
| 2089 | Manitoba Maple | 11 | 17.4 | 2 | Public |
| 2090 | Manitoba maple | 11 | 12.6 | 2 | Public |
| 2091 | Maple | 12 | 19.1 | 2 | Public |
| 2092 | Manitoba maple | 11 | 16.2 | 2 | Public |
| 2093 | Manitoba maple | 9 | 14.9 | 2 | Public |
| 2094 | Manitoba maple | 9 | 12.9 | 1 | Public |
| 2095 | Manitoba maple | 6 | 8.5 | 1 | Public |
| 2096 | Manitoba maple | 7 | 8.9 | 1 | Public |
| 2097 | Manitoba maple | 9 | 8.8 | 1 | Public |
| 2098 | Manitoba maple | 10 | 20.1 | 1 | Public |
| 2099 | Manitoba maple | 10 | 25.6 | 2 | Public |
| 2100 | Manitoba maple | 12 | 26 | 3 | Public |
| 2101 | Manitoba maple | 14 | 34.9 | 4 | Public |
| 2102 | Manitoba maple | 11 | 31.2 | 3 | Public |
| 2103 | American elm | 12 | 32 | 3 | Public |
| 2104 | American elm | 6 | 12.5 | 3 | Public |
| 2105 | Manitoba maple | 5 | 7.8 | 1 | Public |
| 2106 | Manitoba maple | 7 | 11.9 | 4 | Public |
| 2107 | Manitoba maple | 11 | 24.7 | 3 | Public |
| 2108 | Manitoba maple | 10 | 15.6 | 2 | Public |
| 2109 | Manitoba Maple | 11 | 18.7 | 2 | Public |
| 2110 | Manitoba maple | 12 | 18.6 | 4 | Public |
| 2111 | Manitoba maple | 8 | 13 | 4 | Public |
| 2112 | White ash | 8 | 7 | 1 | Public |
| 2113 | American elm | 12 | 33.3 | 2 | Public |
| 2114 | Manitoba maple | 5 | 6.4 | 1 | Public |
| 2115 | Manitoba maple | 11 | 17 | 3 | Public |
| 2116 | Manitoba maple | 10 | 11.7 | 1 | Public |
| 2117 | American elm | 14 | 38.6 | 3 | Public |
| 2118 | American elm | 13 | 35.1 | 3 | Public |
| 2119 | Balsam poplar | 11 | 16.5 | 2 | Public |
| 2120 | Balsam poplar | 11 | 17.4 | 1 | Public |
| 2121 | Balsam poplar | 12 | 25 | 1 | Public |
| 2122 | Manitoba maple | 11 | 19.1 | 2 | Public |

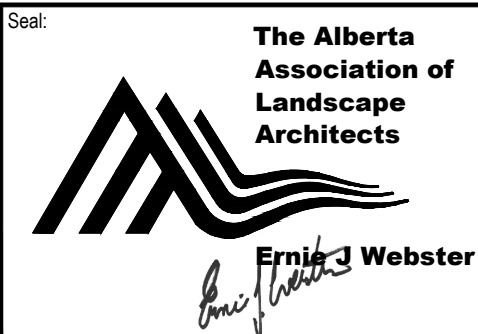
| Tree ID | Species | Height (m) | DBH (cm) | Health | Public/Private |
|---------|-----------------------|------------|----------|--------|----------------|
| 2123 | Manitoba maple | 12 | 19 | 2 | Public |
| 2124 | Balsam poplar | 9 | 10.2 | 1 | Public |
| 2127 | Manitoba maple | 11 | 21.3 | 1 | Public |
| 2128 | Manitoba maple | 12 | 17.5 | 2 | Public |
| 2129 | Balsam poplar | 11 | 19.1 | 1 | Public |
| 2133 | White spruce | 5 | 8 | 1 | Public |
| 2134 | Blue spruce | 6 | 14 | 1 | Private |
| 2137 | Balsam poplar | 15 | 29.9 | 2 | Public |
| 2138 | Balsam poplar | 15 | 29 | 4 | Public |
| 2139 | Balsam poplar | 15 | 38 | 3 | Public |
| 2140 | Balsam poplar | 14 | 25.5 | 2 | Public |
| 2143 | Balsam poplar | 7 | 39.8 | 1 | Private |
| 2144 | Balsam poplar | 8 | 38.4 | 2 | Private |
| 2145 | Eastern cottonwood | 8 | 48 | 1 | Private |
| 2147 | American elm | 7 | 26.6 | 1 | Public |
| 2148 | Manitoba maple | 6 | 16.6 | 3 | Public |
| 2149 | Manitoba maple | 9 | 16.2 | 2 | Public |
| 2160 | Manitoba maple | 10 | 22.1 | 1 | Private |
| 2161 | Manitoba maple | 16 | 57.6 | 1 | Private |
| 2162 | Swedish columnar | 12 | 18.5 | 1 | Private |
| 2165 | American elm | 17 | 71.8 | 1 | Private |
| 2166 | American elm | 14 | 28.4 | 1 | Private |
| 2167 | American elm | 15 | 55.5 | 2 | Public |
| 2168 | Manitoba mail | 15 | 40.2 | 2 | Public |
| 2173 | Manitoba maple | 8 | 27 | 3 | Private |
| 2174 | Horse chestnut | 5 | 7 | 1 | Private |
| 2175 | Manitoba maple | 14 | 58.2 | 1 | Public |
| 2176 | American elm | 6 | 8 | 1 | Public |
| 2177 | American elm | 7 | 7 | 2 | Public |
| 2180 | Manitoba maple | 15 | 31.7 | 2 | Private |
| 2181 | Schubert chokecherry | 6 | 14.2 | 2 | Private |
| 2184 | Balsam poplar | 17 | 68.4 | 2 | Private |
| 2185 | Paper birch | 6 | 17 | 1 | Private |
| 2186 | Water birch | 5 | 10.1 | 1 | Private |
| 2187 | American elm | 8 | 40.5 | 1 | Private |
| 2188 | European mountain ash | 6 | 22.5 | 1 | Private |
| 2189 | Balsam poplar | 18 | 73.8 | 2 | Private |
| 2190 | Balsam poplar | 16 | 77.9 | 1 | Private |
| 2191 | American elm | 5 | 5.9 | 1 | Private |
| 2196 | American elm | 9 | 49 | 1 | Private |
| 2197 | American elm | 8 | 29.4 | 2 | Private |
| 2198 | American elm | 5 | 9.5 | 1 | Private |
| 2199 | American elm | 6 | 17.6 | 2 | Public |
| 2200 | Balsam poplar | 16 | 74.5 | 2 | Private |
| 2201 | American elm | 7 | 22.4 | 3 | Private |
| 2202 | Manitoba maple | 7 | 38 | 2 | Private |
| 2211 | Manitoba maple | 7 | 13.5 | 2 | Public |
| 2212 | Manitoba maple | 7 | 20.7 | 2 | Public |
| 2213 | Manitoba maple | 8 | 21.4 | 1 | Public |
| 2215 | Manitoba maple | 8 | 29 | 3 | Public |
| 2216 | Manitoba maple | 6 | 9.1 | 1 | Public |
| 2217 | Manitoba maple | 6 | 10.1 | 1 | Public |
| 2218 | Manitoba maple | 7 | 19.2 | 4 | Public |
| 2219 | Manitoba maple | 8 | 14.6 | 2 | Public |
| 2220 | Manitoba maple | 9 | 27.6 | 3 | Public |
| 2221 | Manitoba maple | 9 | 20.6 | 2 | Public |
| 2222 | Manitoba maple | 7 | 9.9 | 3 | Public |
| 2223 | Manitoba maple | 7 | 28.8 | 3 | Public |
| 2224 | Manitoba maple | 8 | 37.8 | 3 | Public |
| 2225 | Manitoba maple | 7 | 16.8 | 2 | Public |
| 2226 | Manitoba maple | 6 | 8.6 | 2 | Public |
| 2227 | Manitoba maple | 5 | 16.8 | 2 | Public |
| 2228 | Manitoba maple | 6 | 8.6 | 2 | Public |
| 2229 | American elm | 5 | 8.8 | 1 | Public |
| 2230 | Manitoba maple | 7 | 6.8 | 1 | Public |
| 2231 | Manitoba maple | 7 | 8.4 | 1 | Public |
| 2232 | American elm | 7 | 13.5 | 2 | Public |
| 2233 | American elm | 7 | 14 | 3 | Public |
| 2234 | American elm | 8 | 14.8 | 2 | Public |
| 2235 | American elm | 7 | 8.8 | 1 | Public |

| Tree ID | Species | Height (m) | DBH (cm) | Health | Public/Private |
|---------|----------------|------------|----------|--------|----------------|
| 2236 | American elm | 7 | 13.5 | 3 | Public |
| 2237 | American elm | 7 | 13.7 | 2 | Public |
| 2238 | American elm | 6 | 10.6 | 3 | Public |
| 2239 | American elm | 8 | 14.7 | 2 | Public |
| 2240 | American elm | 6 | 11.2 | 3 | Public |
| 2241 | American elm | 8 | 8.3 | 1 | Public |
| 2242 | American elm | 8 | 9.9 | 2 | Public |
| 2243 | Manitoba maple | 9 | 16.6 | 3 | Public |
| 2244 | Manitoba maple | 8 | 8.5 | 1 | Public |
| 2245 | Manitoba maple | 7 | 6.5 | 1 | Public |
| 2246 | American elm | 5 | 8.4 | 2 | Public |
| 2247 | American elm | 7 | 5.7 | 1 | Public |
| 2248 | Manitoba maple | 5 | 5.4 | 1 | Public |
| 2249 | Manitoba maple | 6 | 5.1 | 3 | Public |
| 2250 | Manitoba maple | 6 | 7.2 | 2 | Public |
| 2251 | Manitoba maple | 7 | 8.4 | 2 | Public |
| 2252 | Manitoba maple | 6 | 10.1 | 2 | Public |
| 2253 | Manitoba maple | 7 | 9.2 | 2 | Public |
| 2254 | Manitoba maple | 7 | 9.8 | 1 | Public |
| 2255 | Manitoba maple | 6 | 8.8 | 2 | Public |
| 2256 | Manitoba maple | 8 | 19.8 | 2 | Public |
| 2257 | Manitoba maple | 8 | 25.5 | 2 | Public |
| 2258 | Manitoba maple | 8 | 27.3 | 3 | Public |
| 2259 | Manitoba maple | 8 | 19.5 | 2 | Public |
| 2260 | Manitoba maple | 2 | 18.2 | 1 | Public |
| 2261 | Manitoba maple | 9 | 25.3 | 1 | Public |
| 2262 | Manitoba maple | 8 | 32.1 | 3 | Public |
| 2263 | Manitoba maple | 9 | 22.2 | 1 | Public |
| 2264 | Manitoba maple | 7 | 12.1 | 1 | Public |
| 2265 | Manitoba maple | 7 | 19.5 | 3 | Public |
| 2266 | White ash | 8 | 13.2 | 2 | Public |
| 2267 | Manitoba maple | 7 | 13.2 | 1 | Public |
| 2268 | Manitoba maple | 7 | 10 | 2 | Public |
| 2269 | Manitoba maple | 6 | 8.5 | 1 | Public |
| 2270 | Manitoba maple | 6 | 11.2 | 2 | Public |
| 2271 | Manitoba maple | 7 | 16.1 | 3 | Public |
| 2272 | Manitoba maple | 8 | 10.8 | 2 | Public |
| 2273 | Manitoba maple | 8 | 11.4 | 1 | Public |
| 2274 | Manitoba maple | 9 | 15 | 1 | Public |
| 2275 | Manitoba maple | 8 | 13.4 | 2 | Public |
| 2276 | Manitoba maple | 6 | 9 | 1 | Public |
| 2277 | Manitoba maple | 8 | 20.1 | 1 | Public |
| 2278 | Manitoba maple | 8 | 22.3 | 3 | Public |
| 2279 | Manitoba maple | 6 | 13.1 | 1 | Public |
| 2280 | Manitoba maple | 10 | 32 | 2 | Public |
| 2281 | Manitoba maple | 7 | 22.1 | 2 | Public |
| 2282 | Manitoba maple | 6 | 6.3 | 1 | Public |
| 2283 | Manitoba maple | 10 | 22.1 | 1 | Public |
| 2284 | Manitoba maple | 10 | 24 | 1 | Public |
| 2285 | Manitoba maple | 9 | 18.2 | 1 | Public |
| 2286 | Manitoba maple | 5 | 8 | 1 | Public |
| 2287 | Manitoba maple | 6 | 17.9 | 2 | Public |
| 2288 | White ash | 6 | 13 | 1 | Public |
| 2289 | Manitoba maple | 6 | 12 | 2 | Public |
| 2290 | Manitoba maple | 6 | 9.8 | 1 | Public |
| 2291 | Manitoba maple | 6 | 10.1 | 1 | Public |
| 2292 | Manitoba maple | 5 | 8.8 | 1 | Public |
| 2293 | Manitoba maple | 5 | 8.5 | 1 | Public |

1700
150
10
0
millimeters



IBI GROUP
3rd Floor - 227 11 Avenue SW
Calgary AB T2R 1R9 Canada
tel 403 270 5600 fax 403 270 5610
ibigroup.com



| Rev | Date | Des | Dwn | Chk | Description |
|-----|------------|-----|-----|-----|-------------------|
| 0 | 2022-12-12 | BB | MD | EW | ISSUED FOR TENDER |

| Rev | Date | Des | Dwn | Chk | Description |
|-----|------|-----|-----|-----|-------------|
| | | | | | |

**TOWN OF DRUMHELLER
NORTH DRUMHELLER**

**HOSPITAL BERM EXTENSION & MICHICHI CREEK WEST BERM
TREE CLEARING NOTES**

Project No. **133142** Drawing No. **L-203** Rev. **0**

Group **LANDSCAPE**



PLAN
Scale 1:500

0 5 10 25m
(1:500)

SEE L-201
SEE L-202

| LEGEND | |
|--------|---|
| | LIMIT OF CONSTRUCTION BOUNDARY |
| | EXISTING TREE TO REMAIN |
| | TREES ON PRIVATE LAND TO BE CLEARED FOR 2023 CONSTRUCTION |
| | TREES ON PUBLIC LAND TO BE CLEARED FOR 2023 CONSTRUCTION |



IBI IBI GROUP
3rd Floor - 227 11 Avenue SW
Calgary AB T2R 1R9 Canada
tel 403 270 5600 fax 403 270 5610
ibigroup.com



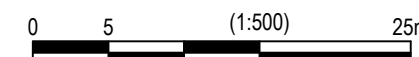
| Rev | Date | Des | Dwn | Chk | Description |
|-----|------------|-----|-----|-----|-------------------|
| 0 | 2022-12-12 | BB | MD | EW | ISSUED FOR TENDER |

| Rev | Date | Des | Dwn | Chk | Description |
|-----|------|-----|-----|-----|-------------|
| | | | | | |

| | | | |
|--|-----------|-------------|-------|
| TOWN OF DRUMHELLER NORTH DRUMHELLER MICHICHI CREEK EAST BERM TREE CLEARING PLAN | | | |
| Project No. | 133142 | Drawing No. | L-201 |
| Group | LANDSCAPE | Rev. | 0 |



PLAN
Scale 1:500



| LEGEND | |
|--------|---|
| | LIMIT OF CONSTRUCTION BOUNDARY |
| | EXISTING TREE TO REMAIN |
| | TREES ON PRIVATE LAND TO BE CLEARED FOR 2023 CONSTRUCTION |
| | TREES ON PUBLIC LAND TO BE CLEARED FOR 2023 CONSTRUCTION |



IBI IBI GROUP
3rd Floor - 227 11 Avenue SW
Calgary AB T2R 1R9 Canada
tel 403 270 5600 fax 403 270 5610
ibigroup.com

Seal
The Alberta Association of Landscape Architects
Ernie J Webster

| Rev | Date | Des | Dwn | Chk | Description |
|-----|------------|-----|-----|-----|-------------------|
| 0 | 2022-12-12 | BB | MD | EW | ISSUED FOR TENDER |

| Rev | Date | Des | Dwn | Chk | Description |
|-----|------|-----|-----|-----|-------------|
| | | | | | |
| | | | | | |
| | | | | | |

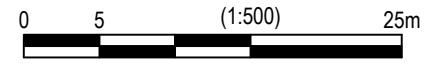
| | |
|---------------------------------|--------------------------|
| TOWN OF DRUMHELLER | |
| NORTH DRUMHELLER | |
| MICHICHI CREEK EAST BERM | |
| TREE CLEARING PLAN | |
| Project No. 133142 | Drawing No. L-202 |
| Group LANDSCAPE | Rev. 0 |



LEGEND

- LIMIT OF CONSTRUCTION BOUNDARY
- + EXISTING TREE TO REMAIN
- ✕ TREES ON PRIVATE LAND TO BE CLEARED FOR 2023 CONSTRUCTION
- + TREES ON PUBLIC LAND TO BE CLEARED FOR 2023 CONSTRUCTION

PLAN
Scale 1:500



IBI IBI GROUP
3rd Floor - 227 11 Avenue SW
Calgary AB T2R 1R9 Canada
tel 403 270 5600 fax 403 270 5610
ibigroup.com

The Alberta Association of Landscape Architects
Ernie J Webster

| Rev | Date | Des | Dwn | Chk | Description |
|-----|------------|-----|-----|-----|-------------------|
| 0 | 2022-12-12 | BB | MD | EW | ISSUED FOR TENDER |

| Rev | Date | Des | Dwn | Chk | Description |
|-----|------|-----|-----|-----|-------------|
| | | | | | |

**TOWN OF DRUMHELLER
NORTH DRUMHELLER
MICHICHI CREEK EAST BERM
TREE CLEARING PLAN**

Project No. **133142** Drawing No. **L-203** Rev. **0**
Group **LANDSCAPE**

MICHICI CREEK EAST BERM - TREES TO BE REMOVED

TREE SURVEY RECEIVED FROM TOWN OF DRUMHELLER, OCTOBER 2022.
• TOTAL TREES REMOVED: 87
• TREES ON PUBLIC LANDS: 87
• TREES ON PRIVATE LANDS: 0

TREE SURVEY AS PER RANGLAND SURVEY,
JANUARY 2022. EXTERNAL TREE HEALTH
UNASSESSED AT THIS TIME. ASSUME HEALTHY.
• TOTAL TREES REMOVED: 13
• TREES ON PUBLIC LANDS: 13
• TREES ON PRIVATE LANDS: 0

Table with columns: Tree ID, Species, DBH (cm), Height (m), Health, Public/Private. Lists 87 trees with their respective details.

Table with columns: Tree ID, Species, DBH (cm), Height (m), Public/Private. Lists 13 trees with their respective details.

1700
Page Size = ANSI D
At Full Size, this border measures 520 mm x 800 mm
millimeters

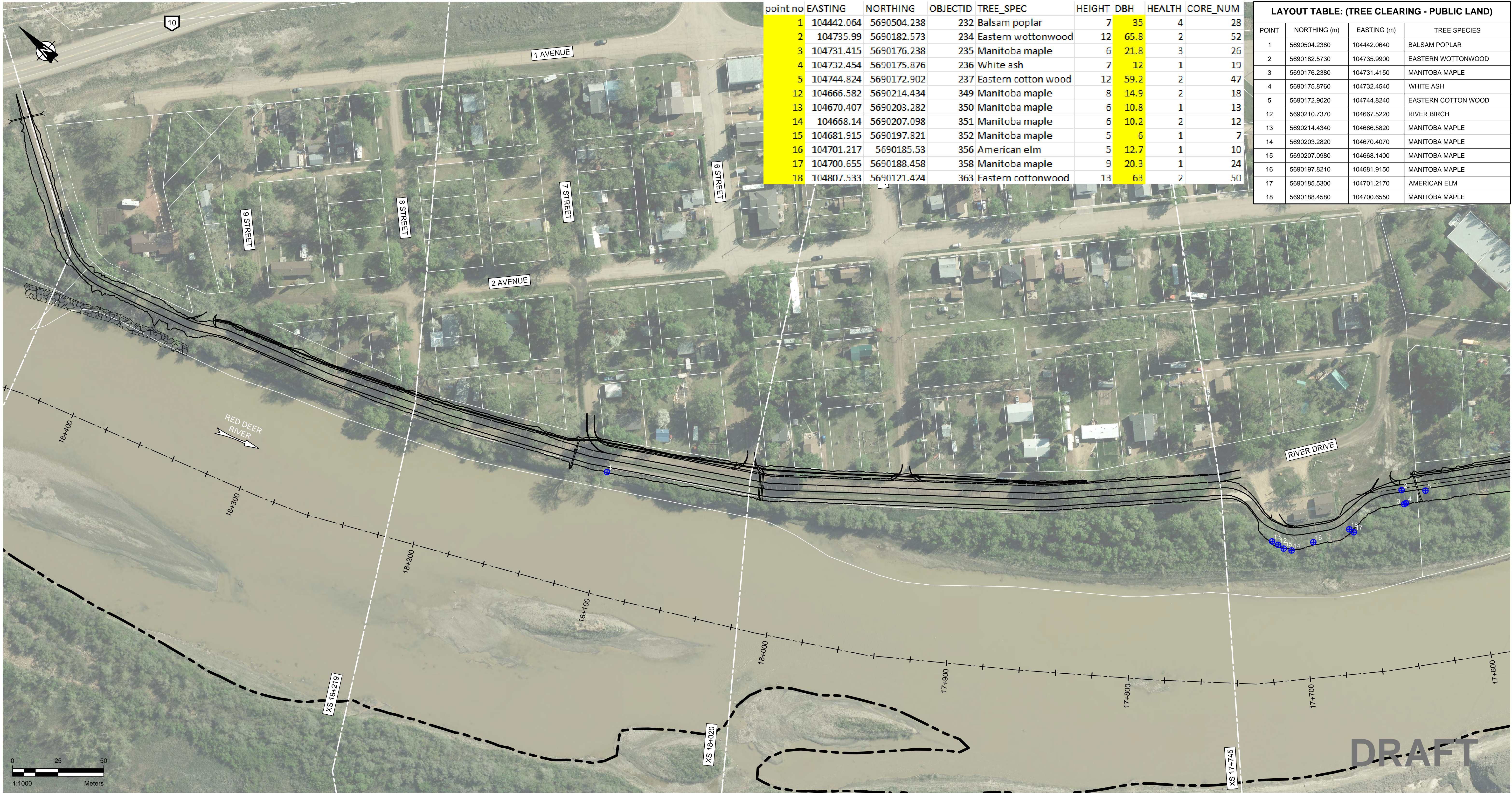


IBI GROUP
3rd Floor - 227 11 Avenue SW
Calgary AB T2R 1R9 Canada
tel 403 270 5600 fax 403 270 5610
ibigroup.com



Revision table with columns: Rev, Date, Des, Dwn, Chk, Description. Row 0: 2022-12-12, BB, MD, EW, ISSUED FOR TENDER

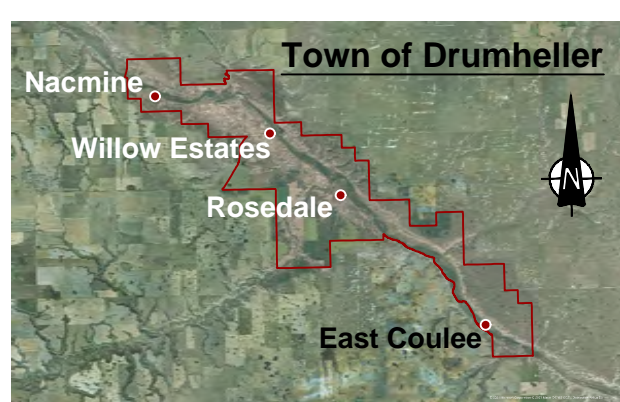
TOWN OF DRUMHELLER
NORTH DRUMHELLER
MICHICI CREEK EAST BERM
TREE CLEARING NOTES
Project No. 133142
Group LANDSCAPE
Drawing No. L-204
Rev. 0



| point no | EASTING | NORTHING | OBJECTID | TREE_SPEC | HEIGHT | DBH | HEALTH | CORE_NUM |
|----------|------------|-------------|----------|---------------------|--------|------|--------|----------|
| 1 | 104442.064 | 5690504.238 | 232 | Balsam poplar | 7 | 35 | 4 | 28 |
| 2 | 104735.99 | 5690182.573 | 234 | Eastern wottonwood | 12 | 65.8 | 2 | 52 |
| 3 | 104731.415 | 5690176.238 | 235 | Manitoba maple | 6 | 21.8 | 3 | 26 |
| 4 | 104732.454 | 5690175.876 | 236 | White ash | 7 | 12 | 1 | 19 |
| 5 | 104744.824 | 5690172.902 | 237 | Eastern cotton wood | 12 | 59.2 | 2 | 47 |
| 12 | 104666.582 | 5690214.434 | 349 | Manitoba maple | 8 | 14.9 | 2 | 18 |
| 13 | 104670.407 | 5690203.282 | 350 | Manitoba maple | 6 | 10.8 | 1 | 13 |
| 14 | 104668.14 | 5690207.098 | 351 | Manitoba maple | 6 | 10.2 | 2 | 12 |
| 15 | 104681.915 | 5690197.821 | 352 | Manitoba maple | 5 | 6 | 1 | 7 |
| 16 | 104701.217 | 5690185.53 | 356 | American elm | 5 | 12.7 | 1 | 10 |
| 17 | 104700.655 | 5690188.458 | 358 | Manitoba maple | 9 | 20.3 | 1 | 24 |
| 18 | 104807.533 | 5690121.424 | 363 | Eastern cottonwood | 13 | 63 | 2 | 50 |

| LAYOUT TABLE: (TREE CLEARING - PUBLIC LAND) | | | |
|---|--------------|-------------|---------------------|
| POINT | NORTHING (m) | EASTING (m) | TREE SPECIES |
| 1 | 5690504.2380 | 104442.0640 | BALSAM POPLAR |
| 2 | 5690182.5730 | 104735.9900 | EASTERN WOTTONWOOD |
| 3 | 5690176.2380 | 104731.4150 | MANITOBA MAPLE |
| 4 | 5690175.8760 | 104732.4540 | WHITE ASH |
| 5 | 5690172.9020 | 104744.8240 | EASTERN COTTON WOOD |
| 12 | 5690210.7370 | 104667.5220 | RIVER BIRCH |
| 13 | 5690214.4340 | 104666.5820 | MANITOBA MAPLE |
| 14 | 5690203.2820 | 104670.4070 | MANITOBA MAPLE |
| 15 | 5690207.0980 | 104668.1400 | MANITOBA MAPLE |
| 16 | 5690197.8210 | 104681.9150 | MANITOBA MAPLE |
| 17 | 5690185.5300 | 104701.2170 | AMERICAN ELM |
| 18 | 5690188.4580 | 104700.6550 | MANITOBA MAPLE |

DBH (cm)
35
65.8
21.8
12
59.2
14.9
10.8
10.2
6
12.7
20.3
63



NOTES:

- SMALL TREES, BUSHES, AND SHRUBS TO BE CLEARED AND GRUBBED PER DIKE FOOTPRINT AS REQUIRED
- TOTAL TREES TO BE CLEARED: 105

LEGEND:

- TREES ON PUBLIC LAND TO BE CLEARED FOR 2023 CONSTRUCTION
- TREES ON PRIVATE LAND TO BE CLEARED FOR 2024 CONSTRUCTION

Project Number: CW238404 Date: OCTOBER, 2022



DRUMHELLER RESILIENCY AND FLOOD MITIGATION PROGRAM
CONCEPTUAL DESIGN AND FEASIBILITY STUDY

Figure 1