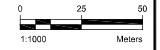


point no	EASTING	NORTHING	OBJECTID	TREE_SPEC	HEIGHT	DBH	HEALTH	CORE_NUM
1	104442.064	5690504.238	232	Balsam poplar	7	35	4	28
2	104735.99	5690182.573	234	Eastern wottonwood	12	65.8	2	52
3	104731.415	5690176.238	235	Manitoba maple	6	21.8	3	26
4	104732.454	5690175.876	236	White ash	7	12	1	19
5	104744.824	5690172.902	237	Eastern cotton wood	12	59.2	2	47
11	104667.522	5690210.737	348	River birch	5	8	2	11
12	104666.582	5690214.434	349	Manitoba maple	8	14.9	2	18
13	104670.407	5690203.282	350	Manitoba maple	6	10.8	1	13
14	104668.14	5690207.098	351	Manitoba maple	6	10.2	2	12
15	104681.915	5690197.821	352	Manitoba maple	5	6	1	7
16	104701.217	5690185.53	356	American elm	5	12.7	1	10
17	104700.655	5690188.458	358	Manitoba maple	9	20.3	1	24

LAYOUT TABLE: (TREE CLEARING - PUBLIC LAND)			
POINT	NORTHING(m)	EASTING (m)	TREE SPECIES
1	5690504.2380	104442.0640	BALSAM POPLAR
2	5690182.5730	104735.9900	EASTERN COTTONWOOD
3	5690176.2380	104731.4150	MANITOBA MAPLE
4	5690175.8760	104732.4540	WHITE ASH
5	5690172.9020	104744.8240	EASTERN COTTON WOOD
11	5690210.7370	104667.5220	RIVER BIRCH
12	5690214.4340	104666.5820	MANITOBA MAPLE
13	5690203.2820	104670.4070	MANITOBA MAPLE
14	5690207.0980	104668.1400	MANITOBA MAPLE
15	5690197.8210	104681.9150	MANITOBA MAPLE
16	5690185.5300	104701.2170	AMERICAN ELM
17	5690188.4580	104700.6550	MANITOBA MAPLE

- NOTES:
- SMALL TREES, BUSHES, AND SHRUBS TO BE CLEARED AND GRUBBED PER BERM FOOTPRINT AS REQUIRED
  - TOTAL TREES TO BE CLEARED: 102
- LEGEND:
- TREES ON PUBLIC LAND TO BE CLEARED FOR 2023 CONSTRUCTION
  - TREES ON PRIVATE LAND TO BE CLEARED FOR 2024 CONSTRUCTION

**NOT FOR CONSTRUCTION DRAFT**



Rev	Date	Des	Own	Chk	Description
0	2022-12-09	SW	JH	LM	ISSUED FOR REVIEW
1	2023-01-13	SW	JH	LM	ISSUED FOR REGULATORY REVIEW

**DRUMHELLER RESILIENCY & FLOOD MITIGATION OFFICE**  
**RESILIENCY AND FLOOD MITIGATION PROGRAM**  
**EAST COULEE BERM**  
**TREE CLEARING PLAN**  
**SHEET 1**

Project No: CW2384  
 Group: EAST COULEE  
 Drawing No: C-135  
 Rev: 1



**Schedule C  
Proposed  
Construction  
Boundary**

**LEGEND**

- - - LIMIT OF CONSTRUCTION BOUNDARY
- + EXISTING TREE TO REMAIN
- × TREES ON PRIVATE LAND TO BE CLEARED FOR 2023 CONSTRUCTION
- + TREES ON PUBLIC LAND TO BE CLEARED FOR 2023 CONSTRUCTION

**PLAN**  
Scale 1:500

0 10 20 30 40 50 60 70 80 90 100  
m



**IBI** IBI GROUP  
3rd Floor - 222 11 Avenue SW  
Calgary AB T2R 1R9 Canada  
403.270.9500 Fax 403.270.9510  
ibigroup.com



Rev	Date	Des	Drawn	Chk	Description
0	2023-12-12	EB	MD	EW	ISSUED FOR TENDER

Rev	Date	Des	Drawn	Chk	Description

TOWN OF DRUMHELLER  
NORTH DRUMHELLER  
MICHICHI CREEK EAST BERM  
TREE CLEARING PLAN

Project No: 133142 Drawing No: **L-203** Rev: **0**  
 Date: 2023-12-12  
 Group: LANDSCAPE

Paper Size - A4 (11.7" x 8.3")  
 At 1/8" Scale, this sheet measures 13.0" x 10.0"  
 DWG: 20251217\_13142.dwg  
 11/27/25 1:03:50 PM

**MICHICHI CREEK EAST BERM - TREES TO BE REMOVED**

TREE SURVEY RECEIVED FROM TOWN OF DRUMHELLER, OCTOBER 2022.

- TOTAL TREES REMOVED: 81
- TREES ON PUBLIC LANDS: 57
- TREES ON PRIVATE LANDS: 0

Tree ID	Species	DBH (cm)	Height (m)	Health	Public/Private
2324	Eastern cottonwood	44	13	2	Public
2335	Manitoba maple	27	10	3	Public
2335	Balsam poplar	12	6	3	Public
2483	Manitoba maple	24	10	2	Public
2490	Manitoba maple	22	9	1	Public
2491	Manitoba maple	23	8	2	Public
2492	Manitoba maple	15	9	2	Public
2493	Manitoba maple	20	11	2	Public
2494	Manitoba maple	28	12	2	Public
2495	Manitoba maple	11	8	1	Public
2495	Manitoba maple	25	10	2	Public
2497	Manitoba maple	23	12	1	Public
2498	Manitoba maple	26	13	2	Public
2499	Manitoba maple	4	6	1	Public
2500	Manitoba maple	9	5	2	Public
2501	Manitoba maple	14	9	2	Public
2502	Manitoba maple	19	10	2	Public
2503	Manitoba maple	21	12	1	Public
2504	Manitoba maple	27	13	2	Public
2505	Manitoba maple	27	13	2	Public
2505	Manitoba maple	24	13	2	Public
2507	Manitoba maple	24	11	3	Public
2509	Manitoba maple	15	10	3	Public
2509	Manitoba maple	21	10	1	Public
2512	Manitoba maple	34	12	2	Public
2511	Manitoba maple	5	5	2	Public
2512	Manitoba maple	39	10	2	Public
2513	Manitoba maple	29	13	2	Public
2514	Manitoba maple	10	8	2	Public
2515	Manitoba maple	27	12	3	Public
2515	Manitoba maple	14	8	1	Public
2517	Manitoba maple	13	7	2	Public
2518	Manitoba maple	17	11	2	Public
2519	Manitoba maple	27	12	1	Public
2522	Manitoba maple	10	5	2	Public
2521	Manitoba maple	17	10	2	Public
2522	Manitoba maple	22	11	3	Public
2523	Manitoba maple	20	10	2	Public
2524	Manitoba maple	14	10	3	Public
2525	Manitoba maple	19	10	1	Public
2525	Manitoba maple	19	10	1	Public
2527	Manitoba maple	15	6	2	Public
2529	Manitoba maple	19	7	3	Public
2532	Manitoba maple	14	8	2	Public
2533	White ash	13	8	1	Public
2540	Eastern cottonwood	44	13	1	Public
2541	Eastern cottonwood	24	10	3	Public
2542	Eastern cottonwood	69	16	3	Public
2561	White ash	6	1	6	Public
2562	White ash	4	7	3	Public
2563	White ash	-	5	1	Public
2564	White ash	-	5	1	Public
2565	Manitoba maple	10	10	2	Public
2565	Manitoba maple	21	11	2	Public
2567	Manitoba maple	17	11	1	Public
2568	Manitoba maple	19	12	1	Public
2569	Manitoba maple	14	12	1	Public
2573	Manitoba maple	14	12	1	Public
2571	Manitoba maple	18	11	2	Public
2572	Manitoba maple	11	10	1	Public
2573	Manitoba maple	11	10	1	Public
2574	Manitoba maple	21	11	1	Public
2575	Manitoba maple	9	7	1	Public
2575	Manitoba maple	8	6	1	Public
2577	Manitoba maple	18	11	1	Public
2578	Manitoba maple	18	12	1	Public
2579	Manitoba maple	12	12	2	Public
2580	Manitoba maple	11	11	2	Public
2582	Manitoba maple	28	9	4	Public
2584	Manitoba maple	18	11	1	Public
2585	Manitoba maple	19	11	2	Public
2585	Manitoba maple	18	9	1	Public
2589	Manitoba maple	15	11	2	Public
2592	Manitoba maple	9	5	1	Public
2593	Manitoba maple	10	7	1	Public
2594	Manitoba maple	9	7	2	Public
2595	Manitoba maple	12	9	1	Public
2595	Manitoba maple	1	7	2	Public
2597	Manitoba maple	11	8	1	Public
2599	Manitoba maple	8	6	1	Public
2599	Manitoba maple	6	6	1	Public
2600	Manitoba maple	12	7	1	Public
2601	Manitoba maple	11	7	1	Public
2602	Manitoba maple	15	8	2	Public
2603	Manitoba maple	11	7	1	Public
2604	Manitoba maple	11	7	2	Public
2605	Manitoba maple	4	8	1	Public

TREE SURVEY AS PER RANGELAND SURVEY, JANUARY 2022, EXTERNAL TREE HEALTH UNASSESSED AT THIS TIME. ASSUME HEALTHY.

- TOTAL TREES REMOVED: 13
- TREES ON PUBLIC LANDS: 13
- TREES ON PRIVATE LANDS: 0

Tree ID	Species	DBH (cm)	Height (m)	Public/Private
1001	Elm Species	4	4	Public
1002	Elm Species	15	7	Public
1016	Manitoba Maple	10	7	Public
1017	Poplar Species	1	5	Public
1039	Manitoba Maple	1	5	Public
1040	Ash Species	9	9	Public
1041	Ash Species	11	6	Public
1080	Poplar Species	46	14	Public
1082	Elm Species	4	3	Public
1093	Ash Species	10	5	Public
1094	Manitoba Maple	6	4	Public
1085	Manitoba Maple	3	3	Public
1096	Manitoba Maple	2	3	Public

**Schedule C  
44 Total Trees  
Highlighted**

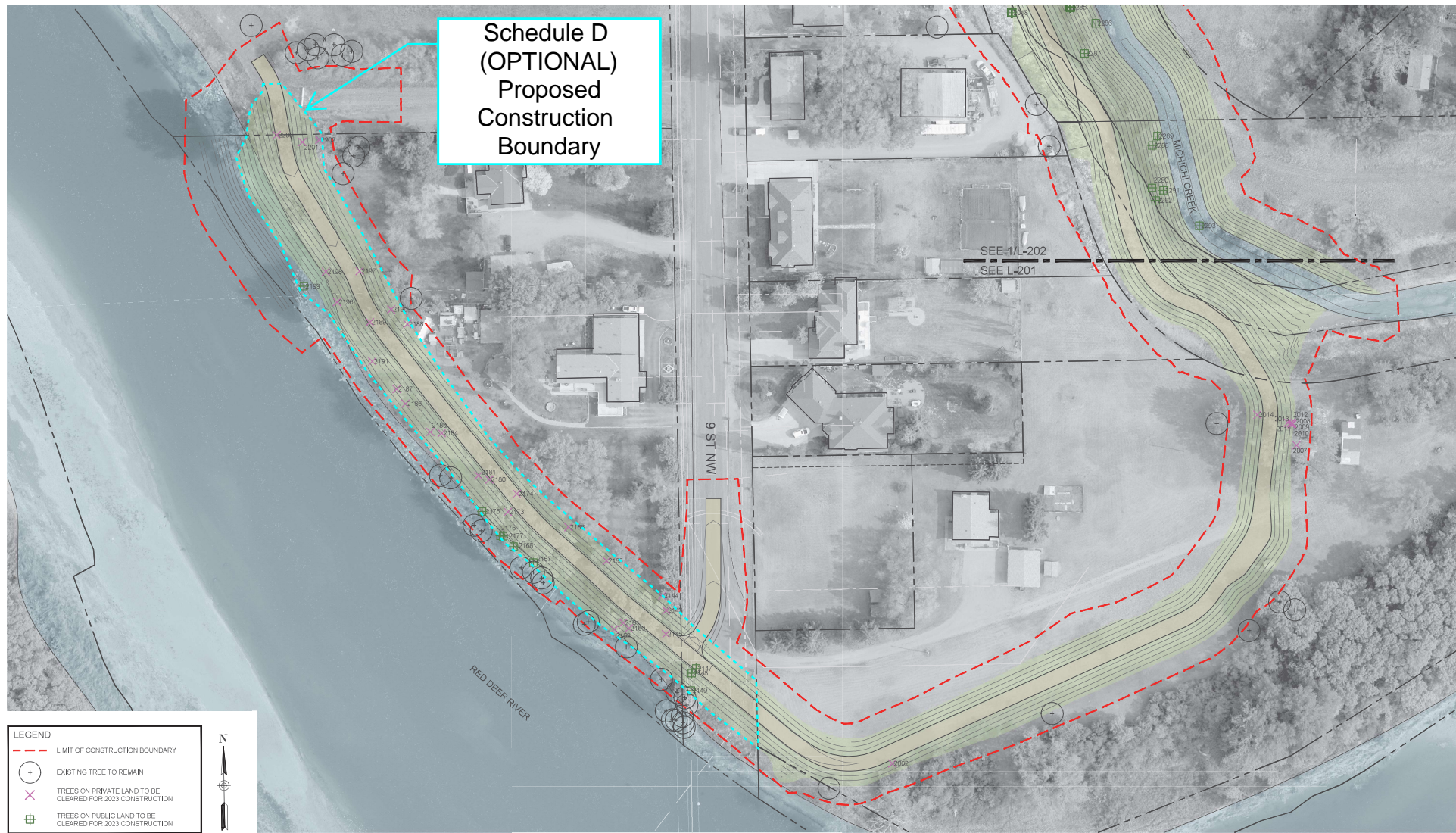


Rev	Date	Des	Dwn	Chk	Description
1	2025-12-12	BB	MD	EW	ISSUED FOR TENDER

Rev	Date	Des	Dwn	Chk	Description

TOWN OF DRUMHELLER  
NORTH DRUMHELLER  
MICHICHI CREEK EAST BERM  
TREE CLEARING NOTES

Project No. 133142 Drawing No. L-204 Pile. 0  
Group: LANDSCAPE



LEGEND	
	LIMIT OF CONSTRUCTION BOUNDARY
	EXISTING TREE TO REMAIN
	TREES ON PRIVATE LAND TO BE CLEARED FOR 2023 CONSTRUCTION
	TREES ON PUBLIC LAND TO BE CLEARED FOR 2023 CONSTRUCTION



**PLAN**  
Scale 1:500



**IBI**  
IBI GROUP  
3rd Floor - 222 11 Avenue SW  
Calgary AB T2R 1R5 Canada  
tel: 403.270.5500 fax: 403.270.5510  
ibi@group.com



Rev	Date	Des	Dwn	Chk	Description
0	2025-12-12	06	MD	EW	ISSUED FOR TENDER

Rev	Date	Des	Dwn	Chk	Description

<b>TOWN OF DRUMHELLER NORTH DRUMHELLER HOSPITAL BERM EXTENSION &amp; MICHICHI CREEK WEST BERM TREE CLEARING PLAN</b>			
Project No:	133142	Drawing No:	L-201
Disc:	LANDSCAPE	Sheet:	0

