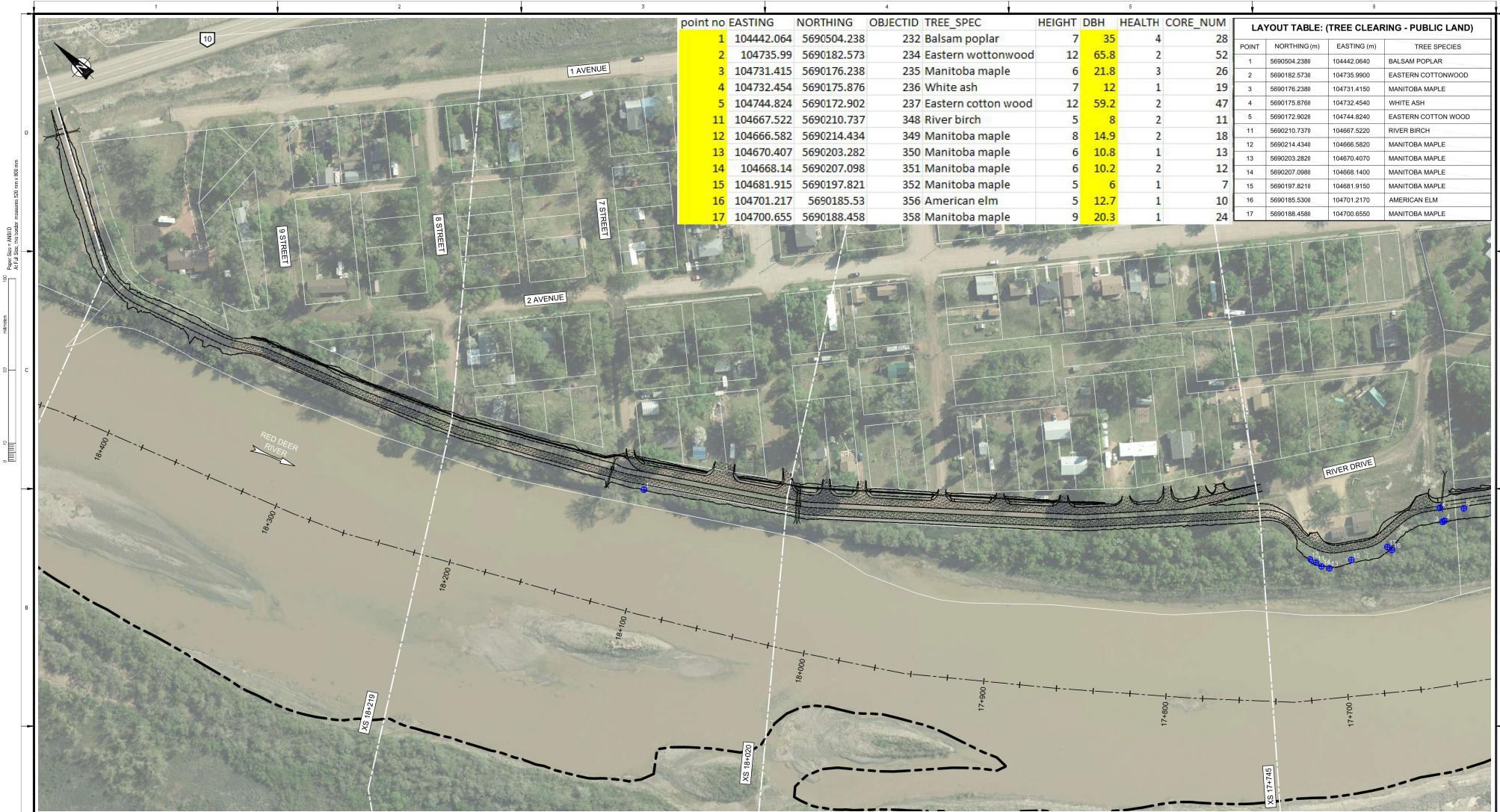


Schedule B

point no	EASTING	NORTHING	OBJECTID	TREE_SPEC	HEIGHT	DBH	HEALTH	CORE_NUM
1	104442.064	5690504.238	232	Balsam poplar	7	35	4	28
2	104735.99	5690182.573	234	Eastern wottonwood	12	65.8	2	52
3	104731.415	5690176.238	235	Manitoba maple	6	21.8	3	26
4	104732.454	5690175.876	236	White ash	7	12	1	19
5	104744.824	5690172.902	237	Eastern cotton wood	12	59.2	2	47
11	104667.522	5690210.737	348	River birch	5	8	2	11
12	104666.582	5690214.434	349	Manitoba maple	8	14.9	2	18
13	104670.407	5690203.282	350	Manitoba maple	6	10.8	1	13
14	104668.14	5690207.098	351	Manitoba maple	6	10.2	2	12
15	104681.915	5690197.821	352	Manitoba maple	5	6	1	7
16	104701.217	5690185.53	356	American elm	5	12.7	1	10
17	104700.655	5690188.458	358	Manitoba maple	9	20.3	1	24

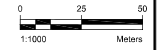
LAYOUT TABLE: (TREE CLEARING - PUBLIC LAND)			
POINT	NORTHING(m)	EASTING (m)	TREE SPECIES
1	5690504.2380	104442.0640	BALSAM POPLAR
2	5690182.5730	104735.9900	EASTERN COTTONWOOD
3	5690176.2380	104731.4150	MANITOBA MAPLE
4	5690175.8760	104732.4540	WHITE ASH
5	5690172.9020	104744.8240	EASTERN COTTON WOOD
11	5690210.7370	104667.5220	RIVER BIRCH
12	5690214.4340	104666.5820	MANITOBA MAPLE
13	5690203.2820	104670.4070	MANITOBA MAPLE
14	5690207.0980	104668.1400	MANITOBA MAPLE
15	5690197.8210	104681.9150	MANITOBA MAPLE
16	5690185.5300	104701.2170	AMERICAN ELM
17	5690188.4580	104700.6550	MANITOBA MAPLE



- NOTES:
- SMALL TREES, BUSHES, AND SHRUBS TO BE CLEARED AND GRUBBED PER BERM FOOTPRINT AS REQUIRED
 - TOTAL TREES TO BE CLEARED: 102

- LEGEND:
- TREES ON PUBLIC LAND TO BE CLEARED FOR 2023 CONSTRUCTION
 - TREES ON PRIVATE LAND TO BE CLEARED FOR 2024 CONSTRUCTION

NOT FOR CONSTRUCTION DRAFT



Rev	Date	Des	Own	Chk	Description
0	2022-12-09	SW	JH	LM	ISSUED FOR REVIEW
1	2023-01-13	SW	JH	LM	ISSUED FOR REGULATORY REVIEW

DRUMHELLER RESILIENCY & FLOOD MITIGATION OFFICE
RESILIENCY AND FLOOD MITIGATION PROGRAM

**EAST COULEE BERM
TREE CLEARING PLAN
SHEET 1**

Project No: CW2384
Group: EAST COULEE

Drawing No: **C-135** Rev: **1**



**Schedule C
Proposed
Construction
Boundary**

LEGEND

- - - LIMIT OF CONSTRUCTION BOUNDARY
- + EXISTING TREE TO REMAIN
- X TREES ON PRIVATE LAND TO BE CLEARED FOR 2023 CONSTRUCTION
- + TREES ON PUBLIC LAND TO BE CLEARED FOR 2023 CONSTRUCTION

PLAN
Scale 1:500



IBI IBI GROUP
3rd Floor - 222 11 Avenue SW
Calgary AB T2R 1R9 Canada
Tel: 403.270.9500 Fax: 403.270.9510
ibi@group.com



Rev	Date	Des	Drawn	Chk	Description
0	2023-12-12	EB	MD	EW	ISSUED FOR TENDER

Rev	Date	Des	Drawn	Chk	Description

TOWN OF DRUMHELLER
NORTH DRUMHELLER
MICHICHI CREEK EAST BERM
TREE CLEARING PLAN

Project No: 133142 Drawing No: **L-203** Rev: **0**
 Date: 2023-12-12
 Group: LANDSCAPE

Paper Size - A4(210 x 297 mm) Plot Scale - 1:1000
 Plot Area - 10000 mm x 10000 mm
 Date - 2023/01/17 13:55:44

MICHICHI CREEK EAST BERM - TREES TO BE REMOVED

TREE SURVEY RECEIVED FROM TOWN OF DRUMHELLER, OCTOBER 2022.

- TOTAL TREES REMOVED: 81
- TREES ON PUBLIC LANDS: 87
- TREES ON PRIVATE LANDS: 0

TREE SURVEY AS PER RANGELAND SURVEY,

- TOTAL TREES REMOVED: 13
- TREES ON PUBLIC LANDS: 13
- TREES ON PRIVATE LANDS: 0

Tree ID	Species	DBH (cm)	Height (m)	Health	Public/Private
2324	Eastern cottonwood	44	13	2	Public
2335	Manitoba maple	27	10	3	Public
2335	Balsam poplar	12	6	3	Public
2483	Manitoba maple	24	10	2	Public
2490	Manitoba maple	22	9	1	Public
2491	Manitoba maple	23	8	2	Public
2492	Manitoba maple	35	9	2	Public
2493	Manitoba maple	20	11	2	Public
2494	Manitoba maple	28	12	2	Public
2495	Manitoba maple	11	8	1	Public
2495	Manitoba maple	25	10	2	Public
2497	Manitoba maple	23	12	1	Public
2498	Manitoba maple	26	13	2	Public
2499	Manitoba maple	4	6	1	Public
2500	Manitoba maple	9	5	2	Public
2501	Manitoba maple	14	9	2	Public
2502	Manitoba maple	19	10	2	Public
2503	Manitoba maple	21	12	1	Public
2504	Manitoba maple	27	13	2	Public
2505	Manitoba maple	27	13	2	Public
2505	Manitoba maple	24	13	2	Public
2507	Manitoba maple	24	11	3	Public
2508	Manitoba maple	10	10	3	Public
2509	Manitoba maple	21	10	1	Public
2512	Manitoba maple	34	12	2	Public
2511	Manitoba maple	5	5	2	Public
2512	Manitoba maple	39	10	2	Public
2513	Manitoba maple	29	13	2	Public
2514	Manitoba maple	10	8	2	Public
2515	Manitoba maple	27	12	3	Public
2515	Manitoba maple	14	8	1	Public
2517	Manitoba maple	13	7	2	Public
2518	Manitoba maple	17	11	2	Public
2519	Manitoba maple	27	12	1	Public
2522	Manitoba maple	10	5	2	Public
2521	Manitoba maple	17	10	2	Public
2522	Manitoba maple	22	11	3	Public
2523	Manitoba maple	20	10	2	Public
2524	Manitoba maple	14	10	3	Public
2525	Manitoba maple	19	10	1	Public
2525	Manitoba maple	19	10	1	Public
2527	Manitoba maple	19	6	2	Public
2528	Manitoba maple	19	7	3	Public
2532	Manitoba maple	14	8	2	Public
2533	White ash	13	8	1	Public
2540	Eastern cottonwood	44	13	1	Public
2541	Eastern cottonwood	24	10	3	Public
2542	Eastern cottonwood	69	16	3	Public
2561	White ash	6	1	6	Public
2562	White ash	4	7	3	Public
2563	White ash	-	5	1	Public
2564	White ash	-	5	1	Public
2565	Manitoba maple	10	10	2	Public
2565	Manitoba maple	21	11	2	Public
2567	Manitoba maple	17	11	1	Public
2568	Manitoba maple	19	12	1	Public
2569	Manitoba maple	14	12	1	Public
2573	Manitoba maple	14	12	1	Public
2571	Manitoba maple	18	11	2	Public
2572	Manitoba maple	11	10	1	Public
2573	Manitoba maple	11	10	1	Public
2574	Manitoba maple	21	11	1	Public
2575	Manitoba maple	9	7	1	Public
2576	Manitoba maple	8	6	1	Public
2577	Manitoba maple	18	11	1	Public
2578	Manitoba maple	18	12	1	Public
2579	Manitoba maple	12	12	2	Public
2580	Manitoba maple	21	11	2	Public
2582	Manitoba maple	28	9	4	Public
2584	Manitoba maple	18	11	1	Public
2585	Manitoba maple	19	11	2	Public
2585	Manitoba maple	18	9	1	Public
2589	Manitoba maple	15	11	2	Public
2592	Manitoba maple	9	5	1	Public
2593	Manitoba maple	10	7	1	Public
2594	Manitoba maple	9	7	2	Public
2595	Manitoba maple	12	9	1	Public
2595	Manitoba maple	4	7	2	Public
2597	Manitoba maple	11	8	1	Public
2598	Manitoba maple	8	6	1	Public
2599	Manitoba maple	6	6	1	Public
2600	Manitoba maple	12	7	1	Public
2601	Manitoba maple	11	7	1	Public
2602	Manitoba maple	15	8	2	Public
2603	Manitoba maple	11	7	1	Public
2604	Manitoba maple	11	7	2	Public
2605	Manitoba maple	4	8	1	Public

Tree ID	Species	DBH (cm)	Height (m)	Public/Private
1001	Elm Species	1	4	Public
1002	Elm Species	15	7	Public
1016	Manitoba Maple	10	7	Public
1017	Poplar Species	1	5	Public
1039	Manitoba Maple	4	5	Public
1040	Ash Species	9	9	Public
1041	Ash Species	11	6	Public
1080	Poplar Species	46	14	Public
1082	Elm Species	4	3	Public
1093	Ash Species	10	5	Public
1094	Manitoba Maple	6	4	Public
1095	Manitoba Maple	3	3	Public
1096	Manitoba Maple	2	3	Public

**Schedule C
44 Total Trees
Highlighted**



IBI GROUP
 3rd Floor - 227 11 Avenue SW
 Calgary AB T2R 1R9 Canada
 Tel: 403.270.5500 Fax: 403.270.5510
 ibigroup.com

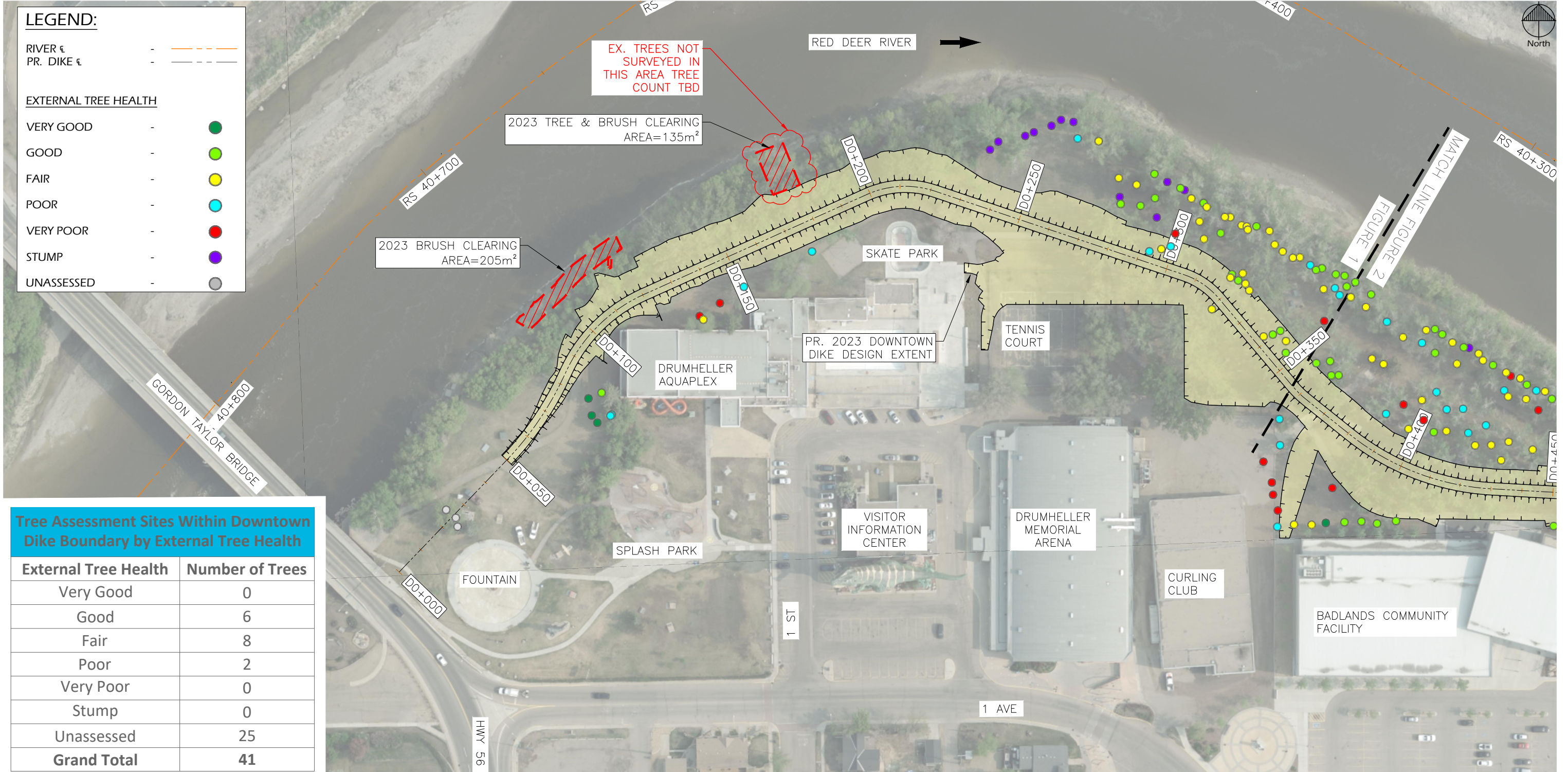


Rev	Date	Des	Dwn	Chk	Description
1	2023-12-12	BB	MD	EW	ISSUED FOR TENDER

Rev	Date	Des	Dwn	Chk	Description

TOWN OF DRUMHELLER
NORTH DRUMHELLER
MICHICHI CREEK EAST BERM
TREE CLEARING NOTES

Project No. 133142 Drawing No. **L-204** Pile. **0**
 Date: 2023-12-12 Group: **LANDSCAPE**



Tree Assessment Sites Within Downtown Dike Boundary by External Tree Health

External Tree Health	Number of Trees
Very Good	0
Good	6
Fair	8
Poor	2
Very Poor	0
Stump	0
Unassessed	25
Grand Total	41



REFERENCE:

1. AERIAL IMAGE FROM 2019 (PROVIDED BY DRUMHELLER RESILIENCY AND FLOOD MITIGATION OFFICE).
2. RIVER C PER NHC (APRIL, 2020).
3. PROJECT COORDINATE SYSTEM CANA83-3TM114.
4. TREE LOCATIONS BY RANGELAND (SEPT. 16, 2021)
5. SCALE NOTATIONS INDICATED ARE BASED ON AN ANSI B DRAWING FORMAT.

NOTES:

1. PR. DIKE FOOTPRINT TO BE FINALIZED AND SUBJECT TO CHANGE UPON DRFM APPROVAL.

Project Number: 21.2311.002
Date: JANUARY 25, 2023

Scale: 1:1250
0m 100m

TOWN OF DRUMHELLER
DOWNTOWN DIKE



LEGEND:

RIVER € - - - - -

PR. DIKE € - - - - -

EXTERNAL TREE HEALTH

VERY GOOD - ●

GOOD - ●

FAIR - ●

POOR - ●

VERY POOR - ●

STUMP - ●

UNASSESSED - ●

Tree Assessment Sites Within Downtown Dike Boundary by External Tree Health

External Tree Health	Number of Trees
Very Good	0
Good	6
Fair	8
Poor	2
Very Poor	0
Stump	0
Unassessed	25
Grand Total	41



REFERENCE:

1. AERIAL IMAGE FROM 2019 (PROVIDED BY DRUMHELLER RESILIENCY AND FLOOD MITIGATION OFFICE).
2. RIVER € PER NHC (APRIL, 2020).
3. PROJECT COORDINATE SYSTEM CANA83-3TM114.
4. TREE LOCATIONS BY RANGELAND (SEPT. 16, 2021)
5. SCALE NOTATIONS INDICATED ARE BASED ON AN ANSI B DRAWING FORMAT.

NOTES:

1. PR. DIKE FOOTPRINT TO BE FINALIZED AND SUBJECT TO CHANGE UPON DRFM APPROVAL.

Project Number: 21.2311.002
Date: JANUARY 25, 2023

Scale: 1:1250
0m 100m

TOWN OF DRUMHELLER
DOWNTOWN DIKE



LEGEND:

RIVER € - - - - -

PR. DIKE € - - - - -

EXTERNAL TREE HEALTH

VERY GOOD - ●

GOOD - ●

FAIR - ●

POOR - ●

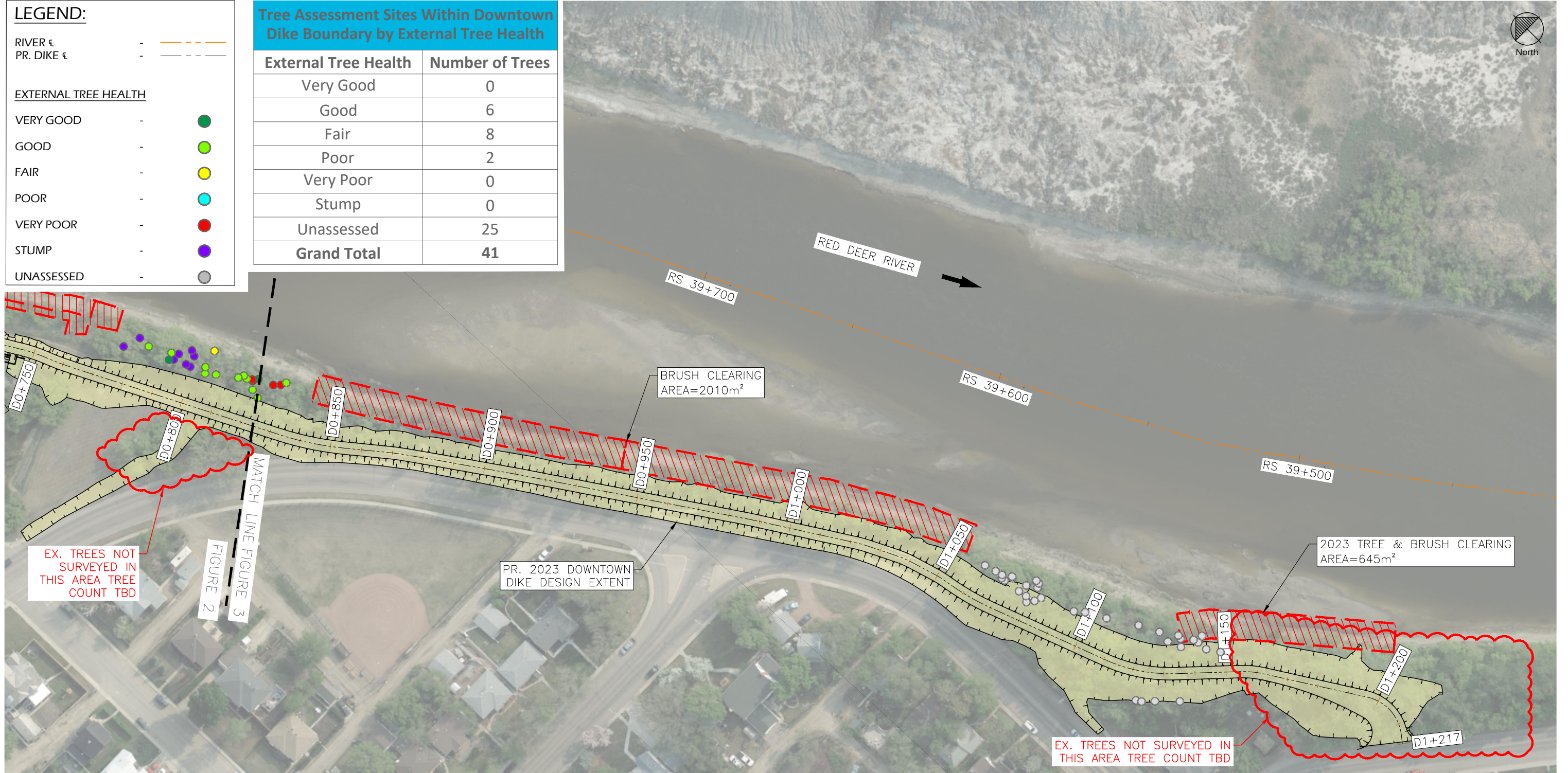
VERY POOR - ●

STUMP - ●

UNASSESSED - ●

Tree Assessment Sites Within Downtown Dike Boundary by External Tree Health

External Tree Health	Number of Trees
Very Good	0
Good	6
Fair	8
Poor	2
Very Poor	0
Stump	0
Unassessed	25
Grand Total	41



REFERENCE:

1. AERIAL IMAGE FROM 2019 (PROVIDED BY DRUMHELLER RESILIENCY AND FLOOD MITIGATION OFFICE).
2. RIVER € PER NHC (APRIL, 2020).
3. PROJECT COORDINATE SYSTEM CANA83-3TM114.
4. TREE LOCATIONS BY RANGELAND (SEPT. 16, 2021)
5. SCALE NOTATIONS INDICATED ARE BASED ON AN ANSI B DRAWING FORMAT.

NOTES:

1. PR. DIKE FOOTPRINT TO BE FINALIZED AND SUBJECT TO CHANGE UPON DRFM APPROVAL.

Project Number: 21.2311.002
Date: JANUARY 25, 2023

0 Scale: 1:250 5

TOWN OF DRUMHELLER
DOWNTOWN DIKE



Schedule E - Downtown Dike

wkt_geo m	SurveyDate	SurveyCrew	ID	Species	DBH	Height	ExternalH e	InternalH e	Cored	Comment	PhotoCo mme	UTM_X	UTM_Y	UTM_Zon e	GlobalID	Age
Point (381917.7 56500000 13411045 5702645. 48799999 98956918 7)	#####	JC		Maple	8.5	3	Unassesse d					0	0		{F6948AF D-F7CC- 47EB- BAF2- A3907F26 7AA9}	
Point (381915.3 37199999 95082617 5702649. 48139999 99314546 6)	#####	JC		Maple	22.7	5	Unassesse d					0	0		{8E9975E 2-C470- 425F- 9E23- 8582AD16 F1AF}	
Point (381917.5 49399999 90165234 5702653. 37729999 98182058 3)	#####	JC		Maple	12.6	4.5	Unassesse d					0	0		{623AB97 1-4403- 4803- B854- 57AA8B01 25E2}	
Point (381915.1 80900000 03576279 5702652. 85070000 03010034 6)	#####	JC		Maple	3.9	3.5	Unassesse d					0	0		{98E4777 0-3C2A- 4EC1- BF83- D2674E65 0BAB}	
Point (381914.7 91899999 60362911 5702654. 51510000 04261732 1)	#####	JC		Maple	14.5	4.5	Unassesse d					0	0		{BFE8D89 4-2C02- 4B0C- 9AB2- 878F278C 854A}	
Point (381910.3 52300000 37699938 5702655. 94930000 04440546)	#####	JC		Poplar	76.5	17	Unassesse d					0	0		{0CBDEB3 5-484A- 4D33- BB6D- 2F5D196B B71B}	
Point (381912.2 43499999 86588955 5702657. 83259999 93830919 3)	#####	JC		Maple	35.8	9	Unassesse d					0	0		{E7D38D3 A-EE77- 4C3E- 9A9E- AB9AB1F1 923C}	
Point (381912.4 99499999 91804361 5702659. 04780000 07569789 9)	#####	JC		Maple	24.1	8	Unassesse d					0	0		{90C742C 3-E549- 4B46- 82FE- FB595305 56E9}	

Schedule E - Downtown Dike

Point (381908.7 75700000 11473894 5702660. 23540000 05871057 5)	#####	JC		Maple	33	7	Unassesse d										{C822D07 7-994A- 4D04- A290- 8391C9A7 CD41}
Point (381895.4 74700000 13709068 5702689. 01329999 97586011 9)	#####			Maple	65.4	11	Unassesse d										{1888E05 9-9EA2- 44F4- A0DD- 77E34227 8579}
Point (381889.3 84499999 6945262 5702700. 59429999 99970197 7)	#####	JC		Maple	15.7	7	Unassesse d										{1CBAAF6 3-763A- 473F- 8698- 23083D37 2531}
Point (381887.3 65500000 3054738 5702702. 24479999 95201826 1)	#####	JC		Maple	13.1	6	Unassesse d										{E17AAE9 D-D0D6- 44E2- AA78- 7F9DA5B2 167F}
Point (381888.6 68800000 1013279 5702703. 61800000 07152557 4)	#####	JC		Maple	10.4	5.5	Unassesse d										{4FADA9A 7-9130- 4BB2- 96DC- D1811AE0 4132}
Point (381891.2 44699999 69005585 5702705. 87759999 93085861 2)	#####	JC		Maple	15.5	7	Unassesse d										{A0A6F24 6-BC3A- 493B- 82D9- A6ACB816 FEAE}
Point (381888.2 88599999 62151051 5702706. 36280000 02354383 5)	#####	JC		Maple	23.4	8	Unassesse d										{1D529ED F-FC23- 4B04- BEFE- E3E51351 D1AD}
Point (381889.9 66900000 34868717 5702710. 80350000 03874301 9)	#####	JC		Maple	19.7	9	Unassesse d										{A354645 3-84F7- 4899- 9EAD- 20AE4CA7 2577}

Schedule E - Downtown Dike

Point (381890.2 40799999 79585409 5702711. 18219999 96900558 5)	#####	JC		Maple	20.6	6	Unassesse d						0	0	{E050306 B-3258- 42CD- B8FB- DEA4477F 1F41}
Point (381887.6 96700000 20414591 5702712. 08349999 97168779 4)	#####	JC		Maple	5.5	4	Unassesse d						0	0	{783709B 4-060B- 41D2- AC17- AC989E75 16F4}
Point (381887.6 52099999 59915876 5702713. 28999999 91059303 3)	#####	JC		Maple	11.4	7	Unassesse d						0	0	{3A4273A 1-687B- 4551- 9522- A35DA9C DB4BE}
Point (381888.4 61799999 69899654 5702713. 89800000 00447034 8)	#####	JC		Maple	8.8	6.5	Unassesse d						0	0	{3222D4F 6-BCAA- 4682- 871C- 84A92716 1ADF}
Point (381887.9 30800000 20563602 5702716. 21330000 08761882 8)	#####	JC		Maple	7.3	3.5	Unassesse d						0	0	{9ECBDBA 9-6B9C- 4045- 9433- D4F90631 6890}
Point (381887.9 33699999 93592501 5702654. 95289999 99165535)	#####	JC		Maple	32.1	4	Unassesse d						0	0	{9708640 A-8804- 4832- AFAC- 83015DB5 6D7C}
Point (381888.8 64699999 80181456 5702653. 38159999 99642372 1)	#####	JC		Maple	21.6	7	Unassesse d						0	0	{5D70547 F-AD59- 4C2F- A342- 7C257196 8718}
Point (381891.8 62099999 56190586 5702650. 27969999 98390674 6)	#####	JC		Maple	38.7	8	Unassesse d						0	0	{1CA5CFE C-DF7B- 4F9B- B1DA- E2431C65 2910}

Schedule E - Downtown Dike

Point (381897.2 37499999 81373549 5702644. 33899999 96870756 1)	#####	JC		Maple	35	10	Unassesse d						0	0		{935B9AB 9-5304- 4FA7- BF04- 6E981BD3 2B1F}
--	-------	----	--	-------	----	----	----------------	--	--	--	--	--	---	---	--	--

Schedule E - Downtown Dike

wkt_geo m	OBJECTID	SurveyDate	SurveyCrew	ID	Species	DBH	Height	ExternalHealth	InternalHealth	Cored	Comment	PhotoComment	UTM_X	UTM_Y	UTM_Zone	GlobalID	Age
Point (381395.4 54099999 7407198 5703273. 56110000 05155801 8)	249	2021-09- 09T19:16: 01.000	ST/JT	T15	Eastern Cottonwo od	39.6	20	Poor	Severely rotted centre	Yes	Cambium exposed; 40% canopy dieback; poplar leaf gall mite		0	0		{4443A00 3-D691- 472E- 864E- 369F1FFD 6FE4}	54
Point (381402.3 99100000 03874302 5703274. 87209999 93383884 4)	252	2021-09- 09T19:25: 15.000	ST/JT		Eastern Cottonwo od	27.8	19	Poor		No	Cambium exposed; leaning; 40% canopy dieback		0	0		{305C490 A-C973- 4A1A- 898F- 83F7FBC8 331B}	

Schedule E - Downtown Dike

wkt_geo m	OBJECTID	SurveyDate	SurveyCrew	ID	Species	DBH	Height	ExternalHealth	InternalHealth	Cored	Comment	PhotoComment	UTM_X	UTM_Y	UTM_Zone	GlobalID	Age
Point (381438.3 67499999 70197678 5703183. 90560000 01728534 7)	238	2021-09- 09T16:19: 47.000	ST/JT		Black Poplar	14.7	9	Fair		No	Leaf spot; 15% canopy dieback; cambium exposed		0	0		{5B23322 D-3AF8- 4EBC- B501- A34E28C4 FF71}	
Point (381399.3 46300000 32484531 5703274. 16290000 08106231 7)	251	2021-09- 09T19:21: 35.000	ST/JT		Eastern Cottonwo od	38.7	21	Fair		No	25% canopy dieback; poplar leaf gall mite		0	0		{0E1B46D 6-C34E- 49CB- 8400- 3A6F2456 C451}	
Point (381414.7 87800000 04917383 5703254. 16559999 99493360 5)	280	2021-09- 09T20:57: 14.000	ST/JT		Eastern Cottonwo od	66.4	22	Fair		No	15% canopy dieback		0	0		{56C4FD7 3-CF1A- 4733- 8BB8- E16E86A8 4CCA}	
Point (381431.0 65899999 81224537 5703244. 73599999 95678663 3)	281	2021-09- 09T21:00: 59.000	ST/JT		Eastern Cottonwo od	56.8	17	Fair		No	20% canopy dieback;		0	0		{3062007 4-2146- 4F38- BAE0- 1CE36726 F44C}	
Point (381438.1 84899999 7600913 5703242. 95429999 94009733 2)	284	2021-09- 09T21:09: 18.000	ST/JT		Eastern Cottonwo od	44.1	17	Fair		No	25% canopy dieback; broken bark		0	0		{7DDC418 7-1F74- 434B- 8F79- 284B93D9 7950}	
Point (381427.0 57699999 77201223 5703259. 70979999 9371171)	345	2021-09- 10T00:12: 39.000	ST/JT		Eastern Cottonwo od	44.4	12	Fair		No	15% canopy dieback; leaning		0	0		{E5D3D31 5-1660- 423C- 89C0- 1AF5361F 7E81}	
Point (381425.8 97099999 71091747 5703261. 90909999 98152256)	346	2021-09- 10T00:13: 48.000	ST/JT		Eastern Cottonwo od	55.4	17	Fair		No	15% canopy dieback; exposed roots		0	0		{905FC69 7-4BE7- 44E8- B83B- CADE196 77014}	
Point (381421.1 65799999 60958958 5703264. 08139999 95589256 3)	348	2021-09- 10T00:17: 40.000	ST/JT		Eastern Cottonwo od	51.7	19	Fair		No	15% canopy dieback; leaning		0	0		{0CA83EC 8-0D58- 419B- A96A- 030FA7C5 5BCB}	

Schedule E - Downtown Dike

wkt_geo m	OBJECTID	SurveyDate	SurveyCrew	ID	Species	DBH	Height	ExternalHealth	InternalHealth	Cored	Comment	PhotoComment	UTM_X	UTM_Y	UTM_Zone	GlobalID	Age
Point (381434.0 26700000 27865171 5703245. 22450000 04768371 6)	282	2021-09-09T21:04:24.000	ST/JT		Eastern Cottonwood	66.5	17	Good		No	10% canopy dieback		0	0		{61A077FD-FCCA-463D-94F3-4196B168D4C5}	
Point (381436.4 88099999 72581863 5703246. 33110000 00685453 4)	283	2021-09-09T21:05:31.000	ST/JT		Eastern Cottonwood	81.5	10	Good		No	2 stemmed; 5% canopy dieback	Leaning	0	0		{74C76164-0604-43F9-A6C6-D171B1B292A0}	
Point (381447.6 54699999 83906746 5703235. 45560000 09179115 3)	295	2021-09-09T22:23:47.000	ST/JT		Black Poplar	35	8	Good		No	10% canopy dieback; leaning; exposed roots		0	0		{394B9548-3A8A-4DBA-BB30-DB9E89B7365E}	
Point (381452.3 01199999 63790178 5703231. 33650000 02086162 6)	298	2021-09-09T22:28:03.000	ST/JT		Blue Spruce	26.1	15	Good		No	5% canopy dieback		0	0		{F84B1FE8-9A1E-43D9-ACC5-11FDA417BD73}	
Point (381423.6 41599999 7407198 5703263. 03600000 03129243 9)	347	2021-09-10T00:15:10.000	ST/JT		Eastern Cottonwood	104.7	17	Good		No	10% canopy dieback; two-stemmed; exposed roots		0	0		{5AEC0E12-C39A-42A3-A36F-2142F139DDF3}	
Point (381421.7 03499999 82863665 5703265. 10669999 94218349 5)	351	2021-09-10T00:19:39.000	ST/JT	T27	Eastern Cottonwood	53.1	14	Good	Rotted center	Yes	10% canopy dieback; leaning		0	0		{079E4D1F-644E-4521-B52C-C00C2CDFEE72}	59