

# NOTICE TO POTENTIAL PROPONENTS

## ADDENDUM 1

### Flood Work East Coulee Phase 1 & 2

**RFT#2023-02-16**

To all Bidders:

The following changes, additions, and/or deletions are hereby made a part of RFP Documents as fully and completely as if the same were fully set forth therein:

<b>Project Name: RFT - Flood Work East Coulee Phase 1 &amp; 2 #2023-02-16</b>	
<b>Date: February 28, 2023</b>	
<b>Item</b>	<b>Detail</b>
<b>A1.1</b>	<p><b>Clarification on Scope</b></p> <p>To better clarify the scope of this project, please see the following:</p> <ul style="list-style-type: none"> <li>• Historical Resources Act Approval</li> <li>• Updated Parkland Borrow Source Letter (to replace Parkland Borrow Source Letter Attached to original Tender)</li> <li>• OH&amp;S Form Prime Contractor Agreement</li> </ul>
<b>A1.2</b>	<p><b>Clarification on Scope</b></p> <p>To better clarify the scope of this project, please see the following:</p> <p>Add the following to Section 4.51 SURFACE DRAINAGE STRUCTURES – STATIONS 1+395, 1+500, 1+947, 2+053, 2+352, 2+462:</p> <p>Steel pipe handrail to be hot-dip galvanized.</p> <p>For all sluice and flap gates, protection against dissimilar metals shall be taken into account by utilizing rubber gaskets on gate components and isolation plastic "top hats" on bolts where dissimilar metals would otherwise be in contact.</p>
<p><b>Attachments:</b></p> <ol style="list-style-type: none"> <li>1. Signed HRA Response</li> <li>2. HRA Standard Requirements</li> <li>3. Parkland Borrow Source Letter</li> <li>4. OH&amp;S Form Prime Contractor Agreement</li> </ol>	

**End of Addendum 1**

## Historical Resources Act Approval with Conditions

---

Proponent: Town of Drumheller  
224 Centre Street, Drumheller, AB T0J 0Y4

Contact: Darryl Drohomerski

Agent: Circle CRM Group Inc.

Contact: Margarita de Guzman

**Project Name: Drumheller Resiliency and Flood Mitigation Program - East Coulee**

Project Components: Flood Mitigation / Remediation

Application Purpose: Requesting HRA Approval / Requirements  
Amendment or Update to Project Submitted Previously

---

*Historical Resources Act* approval is granted for the activities described in this application and its attached plan(s)/sketch(es) subject to the following conditions.



---

David Link  
Assistant Deputy Minister  
Heritage Division  
Alberta Culture and Status of  
Women

---

### SCHEDULE OF CONDITIONS

#### ARCHAEOLOGICAL RESOURCES

Conditional *Historical Resources Act* approval is granted relative to archaeological resources on the understanding that a targeted Historic Resources Impact Assessment for archaeological resources will be conducted, as outlined below.

1. The Historic Resources Impact Assessment must include all areas of high archaeological potential within the southeastern portion of the East Coulee project footprint, as defined in the Statement of Justification and delineated in the attached map and shapefiles.

Development activities outside of this specified target area may proceed as planned without further concerns for archaeological resources.

2. The Historic Resources Impact Assessment is to be carried out prior to the initiation of any land surface disturbance activities within the identified target area, under snow-free, unfrozen ground conditions. Should the project require field studies under winter conditions, directions in the [Archaeological Survey Information Bulletin: Winter Conditions](#) must be followed.

**SCHEDULE OF CONDITIONS (continued)**

3. A deep testing program is required in areas of significant sedimentation.
4. The targeted Historic Resources Impact Assessment for archaeological resources is to be conducted on behalf of the proponent by an archaeologist qualified to hold an archaeological research permit within the Province of Alberta. A permit must be issued by Alberta Culture prior to the initiation of any archaeological field investigations. Please allow ten working days for the permit application to be processed. To obtain contact information for consultants qualified to undertake this work, please consult the list of [Alberta Historic Resource Consultants](#).
5. Results of the Historic Resources Impact Assessment must be reported to Alberta Culture and subsequent *Historical Resources Act* approval must be granted before development proceeds within the identified target area.
6. Relative to the remaining areas and components of the overall Drumheller Resiliency and Flood Mitigation Program:
  - *Historical Resources Act* approval was previously issued for the Drumheller Resiliency and Flood Mitigation - Dike D component of the overall project in *Historical Resources Act* Approval with Conditions letter 4956-20-0069-002 (Sept 10/2021), following completion of a Historic Resources Impact Assessment conducted under Archaeological Research Permit No. 21-112.
  - *Historical Resources Act* approval was previously issued for the Drumheller Resiliency and Flood Mitigation Program - Midland Berm and Newcastle Berm component of the overall project in *Historical Resources Act* Approval with Conditions letter 4956-20-0069-006 (Aug 22/2022), following completion of a Historic Resources Impact Assessment conducted under Archaeological Research Permit No. 22-051.
  - *Historical Resources Act* approval was granted previously for the following components:
    - Drumheller Resiliency and Flood Mitigation Program - Willow Estates component in *Historical Resources Act* Approval with Conditions 4956-20-0069-004 (June 8, 2022)
    - Drumheller Resiliency and Flood Mitigation Program – North Drumheller Dikes B&C components in *Historical Resources Act* Approval with Conditions 4956-20-0069-003 (June 9/2022)
    - Drumheller Resiliency and Flood Mitigation Program – Speedway Borrow Site component in *Historical Resources Act* Approval 4956-20-0069-005 (July 6/2022)
  - Outstanding *Historical Resources Act* requirements for the completion of a Historic Resources Impact Assessment for archaeological resources, as outlined in *Historical Resources Act* Requirements letter 4956-20-0069-001 (Oct 30/2020), remain in effect for the remaining components of the overall project.

**PALAEONTOLOGICAL RESOURCES**

There are no *Historical Resources Act* requirements associated with palaeontological resources; however, the proponent must comply with [Standard Requirements under the Historical Resources Act: Reporting the Discovery of Historic Resources](#), which are applicable to all land surface disturbance activities in the Province.

**SCHEDULE OF CONDITIONS (continued)**

**ABORIGINAL TRADITIONAL USE SITES**

There are no *Historical Resources Act* requirements associated with Aboriginal traditional use sites of a historic resource nature; however, the proponent must comply with [Standard Requirements under the Historical Resources Act: Reporting the Discovery of Historic Resources](#), which are applicable to all land surface disturbance activities in the Province.

**HISTORIC STRUCTURES**

There are no *Historical Resources Act* requirements associated with historic structures; however, the proponent must comply with [Standard Requirements under the Historical Resources Act: Reporting the Discovery of Historic Resources](#), which are applicable to all land surface disturbance activities in the Province.

**PROVINCIALY DESIGNATED HISTORIC RESOURCES**

There are no *Historical Resources Act* requirements associated with Provincially Designated Historic Resources; however, the proponent must comply with [Standard Requirements under the Historical Resources Act: Reporting the Discovery of Historic Resources](#), which are applicable to all land surface disturbance activities in the Province.

**ADDITIONAL COMMENTS**

1. In addition to any specific conditions detailed above, the proponent must abide by all [Standard Conditions under the Historical Resources Act](#).

Proposed Development Location:

MER	RGE	TWP	SEC	LSD List
4	18	27	29	8-10,14-15
4	18	27	32	3
4	18	27	28	5,12

Documents Attached:

Document Name	Document Type
4956-20-0069-007_Shapefiles for Target Area requiring assessment	GIS Data File
4956-20-0069-007_Target Area requiring archaeological assessment	Review
Ortho Map	Illustrative Material



## STANDARD REQUIREMENTS UNDER THE *HISTORICAL RESOURCES ACT*: REPORTING THE DISCOVERY OF HISTORIC RESOURCES

---

If development proponents and/or their agents become aware of historic resources during the course of development activities, they are required, under Section 31 of the *Historical Resources Act*, to report these discoveries to the Heritage Division of Alberta Culture. This requirement applies to all activities in the Province of Alberta.

### 1.0 REPORTING THE DISCOVERY OF ARCHAEOLOGICAL RESOURCES

The discovery of archaeological resources is to be reported to Darryl Bereziuk, Director, Archaeological Survey, at 780-431-2316 (toll-free by first dialing 310-0000) or [darryl.bereziuk@gov.ab.ca](mailto:darryl.bereziuk@gov.ab.ca).

### 2.0 REPORTING THE DISCOVERY OF PALAEOLOGICAL RESOURCES

The discovery of palaeontological resources is to be reported to Dan Spivak, Head, Resource Management, Royal Tyrrell Museum of Palaeontology, at 403-820-6210 (toll-free by first dialing 310-0000) or [dan.spivak@gov.ab.ca](mailto:dan.spivak@gov.ab.ca).

### 3.0 REPORTING THE DISCOVERY OF HISTORIC PERIOD SITES

The discovery of historic structures to be reported to Rebecca Goodenough, Manager, Historic Places Research and Designation Program, at 780-431-2309 (toll-free by first dialing 310-0000) or [rebecca.goodenough@gov.ab.ca](mailto:rebecca.goodenough@gov.ab.ca). Please note that some historic structure sites may also be considered Aboriginal traditional use sites.

### 4.0 REPORTING THE DISCOVERY OF ABORIGINAL TRADITIONAL USE SITES

The discovery of any Aboriginal traditional use site that is of a type listed below is to be reported to Valerie Knaga, Director, Aboriginal Heritage Section, at 780-431-2371 (toll-free by first dialing 310-0000) or [valerie.k.knaga@gov.ab.ca](mailto:valerie.k.knaga@gov.ab.ca).

Aboriginal Traditional Use sites considered by Alberta Culture to be historic resources under the *Historical Resources Act* include:

- Historic cabin remains;
- Historic cabins (unoccupied);
- Cultural or historical community camp sites;



## **STANDARD REQUIREMENTS UNDER THE *HISTORICAL RESOURCES ACT*: REPORTING THE DISCOVERY OF HISTORIC RESOURCES**

---

Ceremonial sites/Spiritual sites;  
Gravesites;  
Historic settlements/Homesteads;  
Historic sites;  
Oral history sites;  
Ceremonial plant or mineral gathering sites;  
Historical Trail Features; and,  
Sweat/Thirst/Fasting Lodge sites

### **5.0 FURTHER SALVAGE, PRESERVATIVE OR PROTECTIVE MEASURES**

If previously unrecorded historic resources are discovered, proponents may be ordered to undertake further salvage, preservative or protective measures or take any other actions that the Minister of Alberta Culture considers necessary.



February 21, 2023  
Project No. RD6950-03

dblakely@drumheller.ca  
Original will remain on file

**Drumheller Resiliency and Flood Mitigation Office**  
**702 Premier Way**  
**Drumheller, Alberta**  
**T0J 0Y4**

**ATTN: Ms. Deighen Blakely, P.Eng.**

Re: Berm Borrow Source 2023  
Drumheller, Alberta

The Drumheller Resiliency and Flood Mitigation (DRFM) Office is proposing to upgrade or construct numerous flood berms along the river between Nacmine and East Coulee. ParklandGEO previously undertook the review of potential borrow sources.

*“Berm Material Borrow Summary – Drumheller, AB”, Prepared for Drumheller Resiliency and Flood Mitigation Office, Prepared by ParklandGEO Ltd., Dated March 21, 2022, File#RD650-03.*

Previous construction in 2022 utilized borrow material from two sources summarized in the following table. These sources are expected to be suitable to source berm borrow material.

Owner	Location	Volume Used (m <sup>3</sup> )	Contact Name	Phone Number	Email
Knibb Developments	SW-28-28-20-W4M	37,379	Jason Knibb	403-312-1951	jason@knibbdevelopments.com
Reg Gallagher	SW-4-31-20-W4M	25,521	Reg Gallagher	403-820-2670	reg@gallaghertrucking.ca

We trust this meets with your present needs. If you have any questions or comments regarding this information, please do not hesitate to contact this office.

Respectfully submitted,  
**PARKLANDGEO LTD.**

Adrian Chua, E.I.T.  
Geo-Materials Engineer-in-Training

Reviewed by: Bryden Lutz, P.Eng.  
Geotechnical Engineer



Parkland Geotechnical Consulting Ltd.  
#102 – 4756 Riverside Drive  
Red Deer, AB, T4N 2N7  
www.parklandgeo.com  
T: 403 343 2428  
F: 403 343 7699

---

March 31, 2022  
Project No. RD6950-03

dblakely@drumheller.ca  
Original will remain on file

**Drumheller Resiliency and Flood Mitigation Office  
702 Premier Way  
Drumheller, Alberta  
T0J 0Y4**

**ATTN: Ms. Deighen Blakely, P.Eng.**

Re: Berm Material Borrow Summary  
Drumheller, AB

Dear Ms. Blakely:

## **1.0 INTRODUCTION**

The Drumheller Resiliency and Flood Mitigation (DRFM) Office is proposing to upgrade or construct numerous flood berms along the river between Nacmine and East Coulee. This construction will require significant volume of engineered fill. The DRFM Office posted a tender request for Expressions of Interest (EOI) for potential private borrow sources to the Drumheller and Alberta Purchasing Connection website on January 31, 2022. ParklandGEO was requested to review submissions, visit the sites from the and take samples for laboratory soil testing to review the expected suitability of these private sources around the greater Drumheller area. This letter summarizes the current information of these potential private borrow sources.

## **2.0 GENERAL FILL MATERIAL SPECIFICATION**

The berms are being designed by multiple engineering consultants, each with their own specific criteria for fill material. In general the required fill will be select clay. The general material specifications are summarized in the following table:



**TABLE 1: FILL MATERIAL SPECIFICATION**

Specification	Test Type	Use/ Significance
Clay content $\geq 20\%$	Hydrometer Grain Size Analysis	Indicator of permeability and workability
Low to medium plastic	Atterberg Limits	Indicator of permeability and workability
Non to low dispersive	Pin Hole Test - Remoulded at $\geq 98\%$ SMPDD	To reduce the risk of erosion of the berm material due to dispersion of the clay fill
Permeability $\leq 1 \times 10^{-6}$ m/s	Hydraulic Conductivity - Remoulded at $\geq 98\%$ SMPDD	Direct measure of permeability for potential flood water passing through the constructed berm
Internal friction Angle $\geq 25^\circ$	Direct Shear - Remoulded at $\geq 98\%$ SMPDD	Used to describe the friction shear resistance for design of berm side slope stability

Any submission of for use of borrow material will require laboratory test results to confirm the material meets or exceeds the parameters outlined in Table 1. All file laboratory test results completed during this program has been provided to potential borrow owner.

### 3.0 EOI SUBMISSION SUMMARY

To ten submissions were received through the EOI, including four proponents with multiple proposed borrow locations. ParklandGEO reviewed all submission documents and attempted to contact owners to collect samples from the potential borrow locations. Four of the submitted borrow sites are expected to be suitable for use in constructed flood berms. Two additional sites are likely to have suitable material, however samples were not recovered from these sites for direct review. A further two sites have no comment on the suitability as no soils information submitted or collected due to access or contact issues.

A short summary of the submitted borrow locations that are expected to have suitable material or has material that was not directly reviewed have provided in the attached summary table. Pit Locations, where disclosed are shown on the attached figures. Locations that are not considered to have suitable material have not been included in the summary table.

## 4.0 CLOSURE

Geological conditions are variable. The suitability comments presented in this letter, and any subsequent correspondence, are based on an evaluation of information derived from boreholes, laboratory testing, landowner information and additional sources of information referenced in this letter. This letter has been prepared for the exclusive use of **Town of Drumheller, Drumheller Resiliency and Flood Mitigation Office** and their approved agents for the specified application to the Flood Mitigation Project in Drumheller, Alberta. This letter report has been prepared in accordance with generally accepted soil and geotechnical engineering practices. No other warranty, expressed or implied, is made. The limitations of this report are specified in the General Terms and Conditions section and should be considered part of this report. We trust this meets with your present needs. If you have any questions or comments regarding this information, please do not hesitate to contact this office.

Respectfully submitted,  
**PARKLAND GEOTECHNICAL CONSULTING LTD.**

Bryden Lutz, P.Eng.  
Geotechnical Engineer

Reviewed by: Mark Brotherton, P.Eng.

## APPENDIX

Table – Clay Borrow Expression of Interest Summary

Figure 1 – Key Plan

Figure 2 – Aerial Plan Drumheller

Figure 3 – Aerial Plan Morrin

Figure 4 – Aerial Plan Hanna

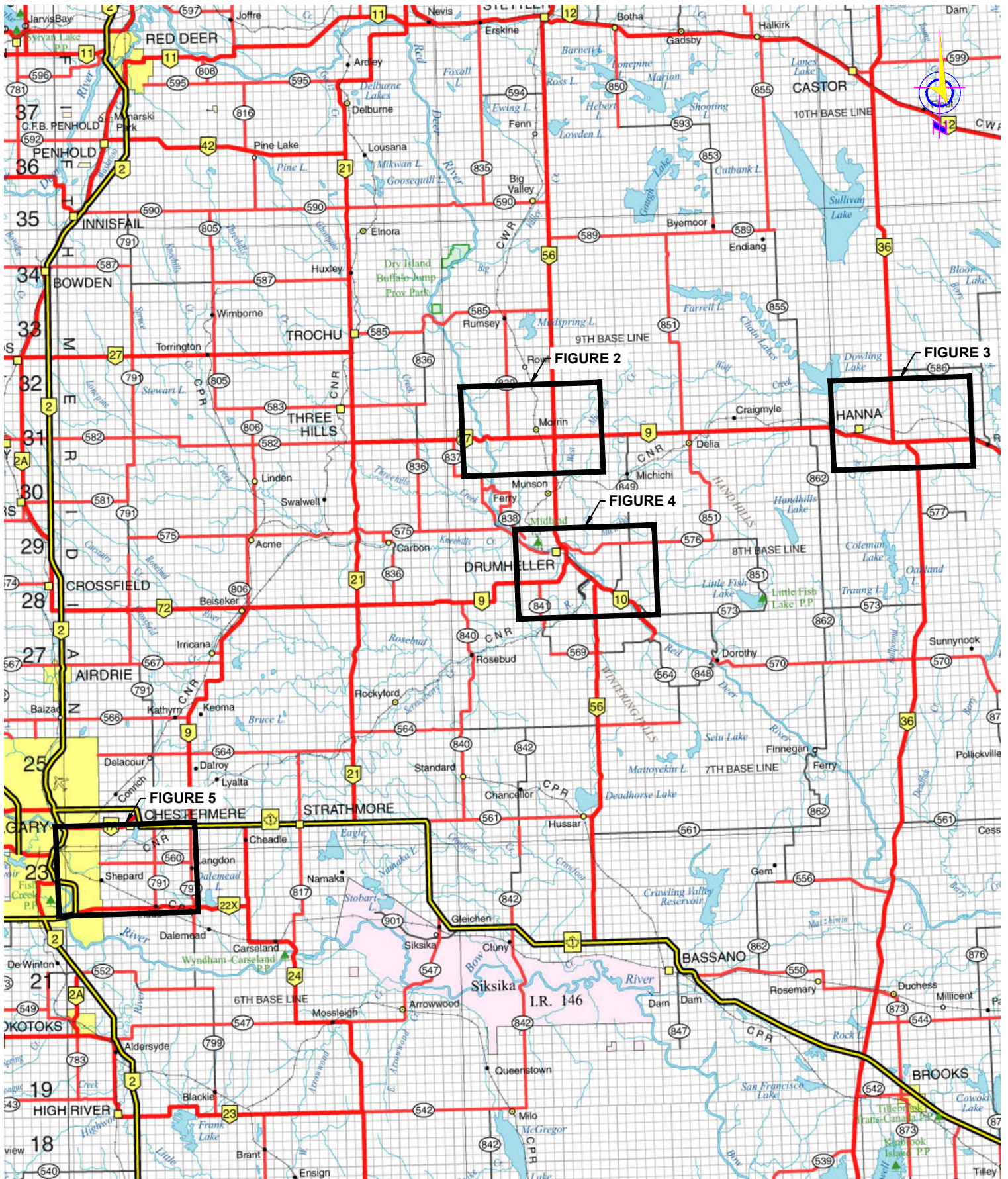
Figure 5 – Aerial Plan East Calgary

**CLAY BOPROW EXPRESSION OF INTEREST SUMMARY**  
**DRUMHELLER RESILIENCY AND FLOOD MITIGATION PROGRAM**  
 March 31, 2022

Source Owner	Contact Individual	Phone Number	Email	Expected Suitability	Comments/ Expected Soil	Provided Borrow Location	Figure #
Knibb Developments Ltd	Jason Knibb	403-312-1951	<a href="mailto:jason@knibbdevelopments.com">jason@knibbdevelopments.com</a>	Yes	Clay Till expected to be suitable	SW-28-28-20-W4M	4
Wiarth Dirtwork Ltd	Darcy Wiarth	403-334-7364	<a href="mailto:d_nwiarth@mac.com">d_nwiarth@mac.com</a>	Yes	Till expected to be suitable	16-29-31-20-W4M	2
Reg Gallagher	Reg Gallagher	403-820-2670	<a href="mailto:reg@gallaghertrucking.ca">reg@gallaghertrucking.ca</a>	Yes	Till expected to be suitable	SW-4-31-20-W4M	2
KLS Earthworks Inc.	Mark Walton	403-370-3749	<a href="mailto:mwalton@kls earthworks.com">mwalton@kls earthworks.com</a>	Yes	Till expected to be suitable	232098 Range Rd 283, Alberta T1X 0K7	5
Northstar Trucking	Brendan Jensen	780-215-0950	<a href="mailto:brendan@Northstartrucking.ca">brendan@Northstartrucking.ca</a>	Yes	Till expected to be suitable	41 km North of Drumheller	N/A
Smith Trucking Service (1976) Ltd.	Doug Wutzke	403-633-7880	<a href="mailto:Doug@Smithtrucking.com">Doug@Smithtrucking.com</a>	TBD*	No direct testing or observation. North site expected to be till based on client submitted grain size analysis – possibly suitable	South of Drumheller Valley - North location	N/A
McNair Sand and Gravel Inc.	Miles McNair	403-850-5956	<a href="mailto:Miles@mcnairmsg.ca">Miles@mcnairmsg.ca</a>	TBD*	No information on soil	4-31-13-W4M & 3-31-13-W4M & 2-31-13-W4M	4
D+K Christensen Farms Ltd.	Duane Christensen	403-334-3644	<a href="mailto:dewakat@aisnet.co">dewakat@aisnet.co</a>	TBD*	No information on soil	S 36-27-19-W4M	4

\*TBD - To be decided/ additional information required





CLIENT:

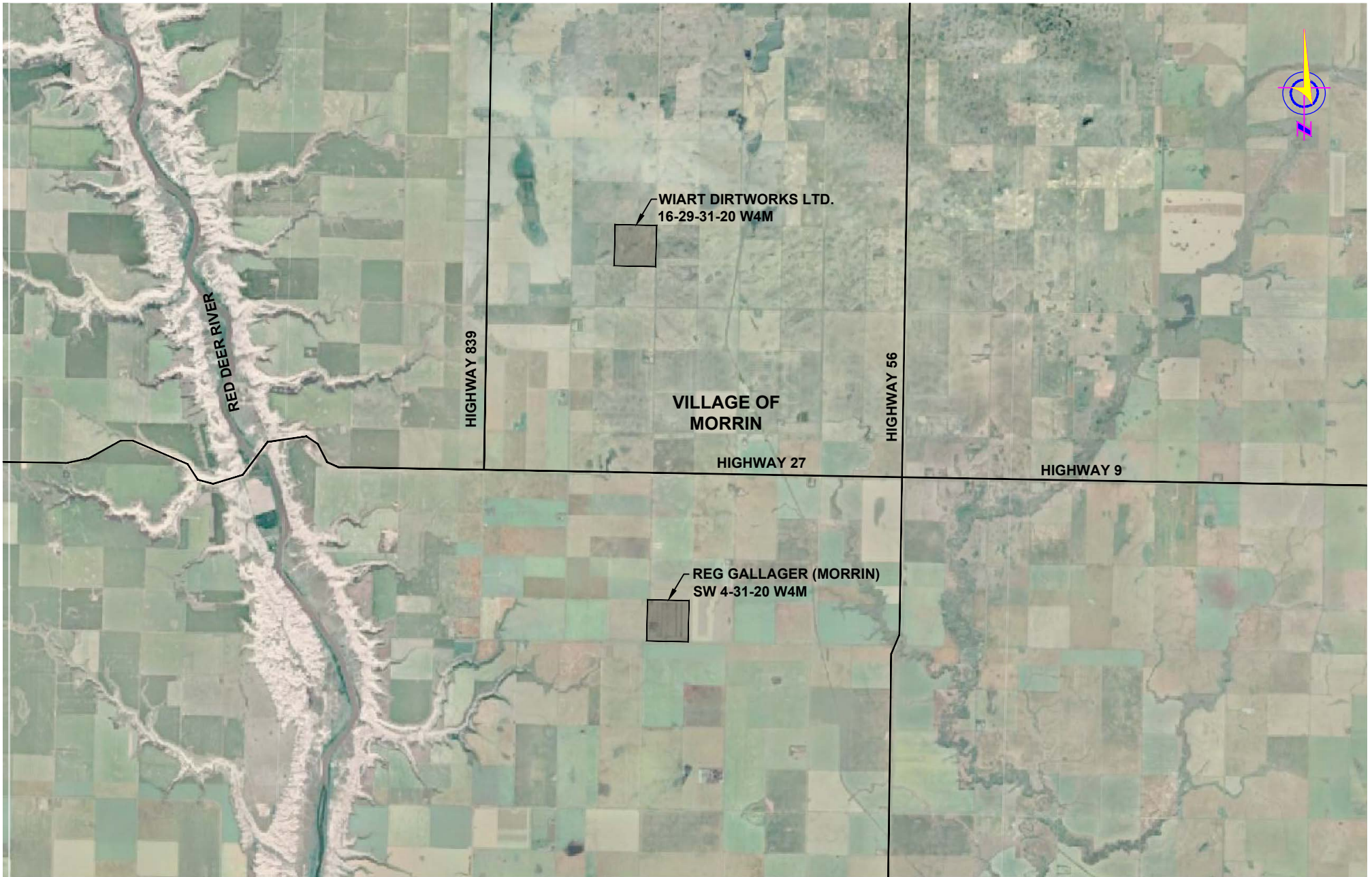


### KEY PLAN

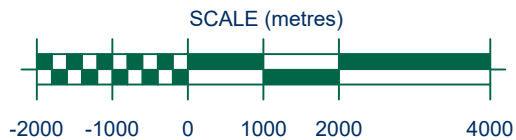
#### BORROW SOURCE SITES MULTIPLE SITES, ALBERTA

DRAWN: NC	CHK'D.: BL	REV #: 0	DATE: MARCH 2022
SCALE: NTS	JOB NO. RD6950-03	DRAWING NO. FIGURE 1	





NOTE: AERIAL PHOTOGRAPH OBTAINED FROM GOOGLE EARTH, DATED JULY 28, 2021.



CLIENT:



### AERIAL PLAN - MORRIN

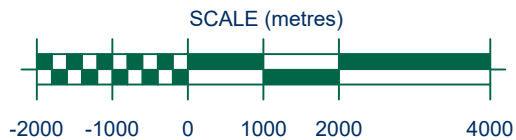
BORROW SOURCE SITES  
16-29-31-20 W4M & SW 4-31-20 W4M, ALBERTA

DRAWN: NC	CHKD.: BK	REV #: 0	DATE: MARCH 2022
SCALE: 1:100,000		JOB NO. RD6950-03	DRAWING NO. FIGURE 2





NOTE: AERIAL PHOTOGRAPH OBTAINED FROM GOOGLE EARTH, DATED JUNE 20, 2021.



CLIENT:

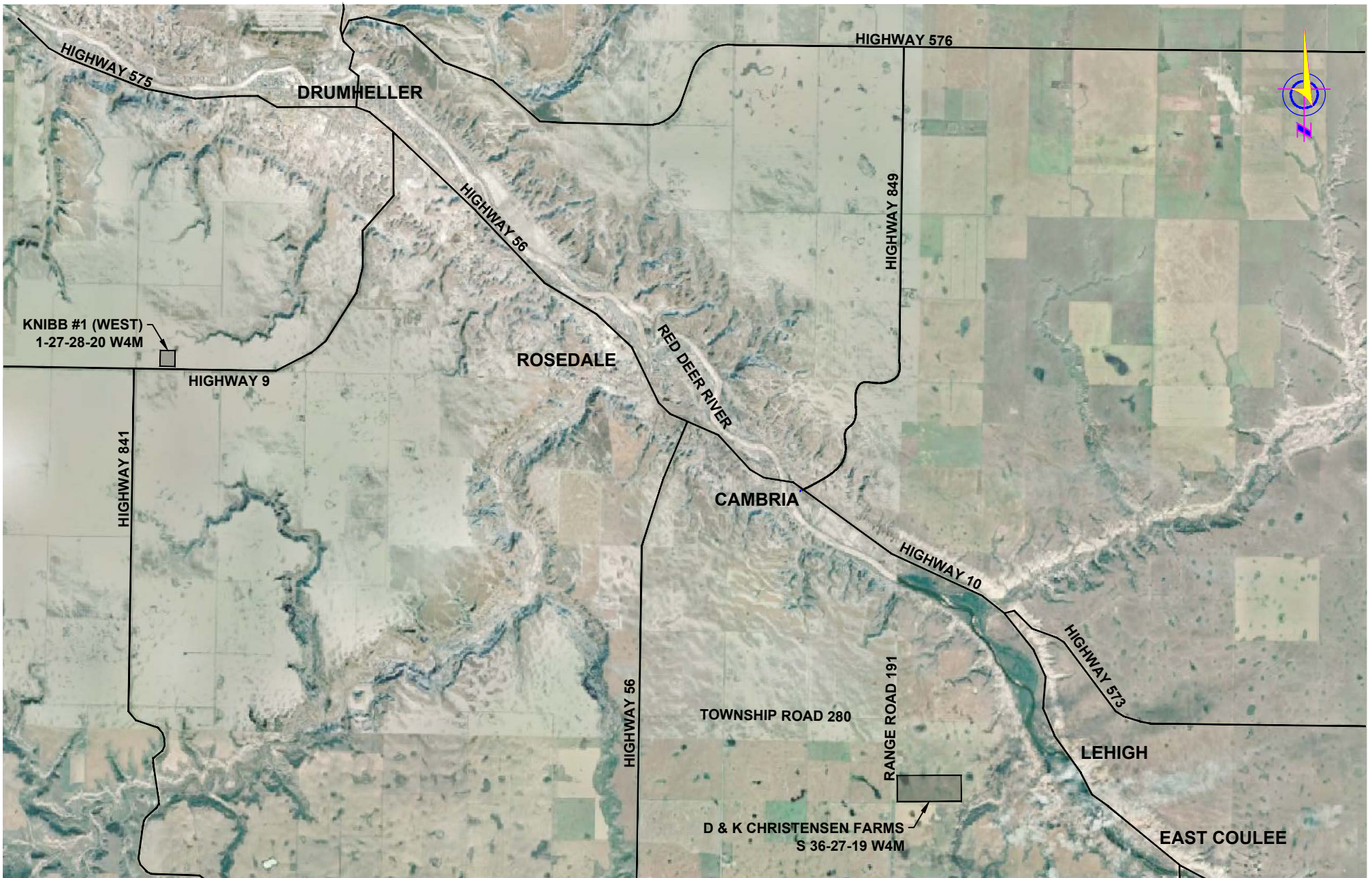


## AERIAL PLAN - HANNA

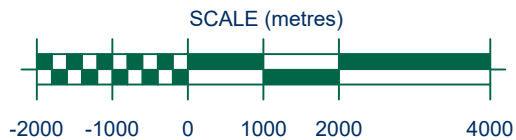
BORROW SOURCE SITES  
2-31-13 W4M, 3-31-13 W4M & 4-31-13 W4M, ALBERTA

DRAWN: NC	CHK'D.: BK	REV #: 0	DATE: MARCH 2022
SCALE: 1:100,000		JOB NO. RD6950-03	DRAWING NO. FIGURE 3





NOTE: AERIAL PHOTOGRAPH OBTAINED FROM GOOGLE EARTH, DATED JULY 28, 2021.



CLIENT:



### AERIAL PLAN - DRUMHELLER

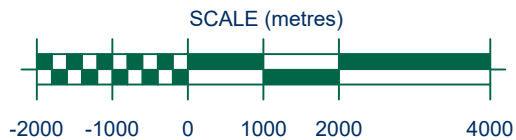
BORROW SOURCE SITES  
8-27-28-20 W4M & S 36-27-19 W4M, ALBERTA

DRAWN: NC	CHK'D.: BK	REV #: 0	DATE: MARCH 2022
SCALE: 1:100,000		JOB NO. RD6950-03	DRAWING NO. FIGURE 4





NOTE: AERIAL PHOTOGRAPH OBTAINED FROM GOOGLE EARTH, DATED JULY 21, 2021.



CLIENT:

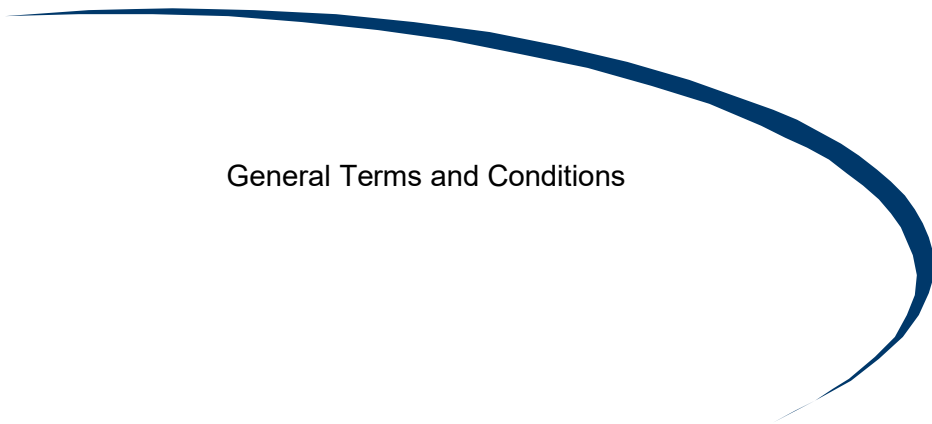


### AERIAL PLAN - CALGARY

BORROW SOURCE SITES  
232098 RANGE ROAD 283, ALBERTA

DRAWN: NC	CHK'D.: BK	REV #: 0	DATE: MARCH 2022
SCALE: 1:100,000		JOB NO. RD6950-03	DRAWING NO. FIGURE 5

## LIMITATIONS



General Terms and Conditions

The use of this attached report is subject to the following general terms and conditions.

1. **STANDARD OF CARE** - In the performance of professional services, ParklandGEO used the degree of care and skill ordinarily exercised under similar circumstances by reputable members of its profession practicing in the same or similar localities. No other warranty expressed or implied is made in any manner.
2. **INTERPRETATION OF THE REPORT** - The CLIENT recognizes that subsurface conditions will vary from those encountered at the location where borings, surveys, or explorations are made and that the data, interpretations and recommendation of ParklandGEO are based solely on the information available to him. Classification and identification of soils, rocks, geological units, contaminated materials and contaminant quantities will be based on commonly accepted practices in geotechnical or environmental consulting practice in this area. ParklandGEO will not be responsible for the interpretation by others of the information developed.
3. **SITE INFORMATION** - The CLIENT has agreed to provide all information with respect to the past, present and proposed conditions and use of the Site, whether specifically requested or not. The CLIENT acknowledged that in order for ParklandGEO to properly advise and assist the CLIENT, ParklandGEO has relied on full disclosure by the CLIENT of all matters pertinent to the Site investigation.
4. **COMPLETE REPORT** - The Report is of a summary nature and is not intended to stand alone without reference to the instructions given to ParklandGEO by the CLIENT, communications between ParklandGEO and the CLIENT, and to any other reports, writings or documents prepared by ParklandGEO for the CLIENT relative to the specific Site, all of which constitute the Report. The word "Report" shall refer to any and all of the documents referred to herein. In order to properly understand the suggestions, recommendations and opinions expressed by ParklandGEO, reference must be made to the whole of the Report. ParklandGEO cannot be responsible for use of any part or portions of the report without reference to the whole report. The CLIENT has agreed that "This report has been prepared for the exclusive use of the named CLIENT. Any use which a third party makes of this report, or any reliance on or decisions to be made based on it, are the responsibility of such third parties. ParklandGEO accepts no responsibility for damages, if any, suffered by any third party as a result of decisions made or actions based on this report."

The CLIENT has agreed that in the event that any such report is released to a third party, the above disclaimer shall not be obliterated or altered in any manner. The CLIENT further agrees that all such reports shall be used solely for the purposes of the CLIENT and shall not be released or used by others without the prior written permission of ParklandGEO.

5. **LIMITATIONS ON SCOPE OF INVESTIGATION AND WARRANTY DISCLAIMER**  
There is no warranty, expressed or implied, by ParklandGEO that:
  - a) the investigation uncovered all potential geo-hazards, contaminants or environmental liabilities on the Site; or
  - b) the Site is entirely free of all geo-hazards or contaminants as a result of any investigation or cleanup work undertaken on the Site, since it is not possible, even with exhaustive sampling, testing and analysis, to document all potential geo-hazards or contaminants on the Site.

The CLIENT acknowledged that:

- a) the investigation findings are based solely on the information generated as a result of the specific scope of the investigation authorized by the CLIENT;
  - b) unless specifically stated in the agreed Scope of Work, the investigation will not, nor is it intended to assess or detect potential contaminants or environmental liabilities on the Site;
  - c) any assessment regarding geological conditions on the Site is based on the interpretation of conditions determined at specific sampling locations and depths and that conditions may vary between sampling locations, hence there can be no assurance that undetected geological conditions, including soils or groundwater are not located on the Site;
  - d) any assessment is also dependent on and limited by the accuracy of the analytical data generated by the sample analyses;
  - e) any assessment is also limited by the scientific possibility of determining the presence of unsuitable geological conditions for which scientific analyses have been conducted; and
  - f) the laboratory testing program and analytical parameters selected are limited to those outlined in the CLIENT's authorized scope of investigation; and
  - g) there are risks associated with the discovery of hazardous materials in and upon the lands and premises which may inadvertently discovered as part of the investigation. The CLIENT acknowledges that it may have a responsibility in law to inform the owner of any affected property of the existence or suspected existence of hazardous materials and in some cases the discovery of hazardous conditions and materials will require that certain regulatory bodies be informed. The CLIENT further acknowledges that any such discovery may result in the fair market value of the lands and premises and of any other lands and premises adjacent thereto to be adversely affected in a material respect.
6. **COST ESTIMATES** - Estimates of remediation or construction costs can only be based on the specific information generated and the technical limitations of the investigation authorized by the CLIENT. Accordingly, estimated costs for construction or remediation are based on the known site conditions, which can vary as new information is discovered during construction. As some construction activities are an iterative exercise, ParklandGEO shall therefore not be liable for the accuracy of any estimates of remediation or construction costs provided.
  7. **LIMITATION OF LIABILITY** - The CLIENT has agreed that to the fullest extent permitted by the law ParklandGEO's total liability to CLIENT for any and all injuries, claims, losses, expenses or damages whatsoever arising out of or in anyway relating to the Project is contractually limited, as outlined in ParklandGEO's standard Consulting Services Agreement. Further, the CLIENT has agreed that to the fullest extent permitted by law ParklandGEO is not liable to the CLIENT for any special, indirect or consequential damages whatsoever, regardless of cause.
  8. **INDEMNIFICATION** - To the fullest extent permitted by law, the CLIENT has agreed to defend, indemnify and hold ParklandGEO, its directors, officers, employees, agents and subcontractors, harmless from and against any and all claims, defence costs, including legal fees on a full indemnity basis, damages, and other liabilities arising out of or in any way related to ParklandGEO's work, reports or recommendations.



# OH&S Form

## Prime Contractor Agreement

### Purpose:

The Occupational Health & Safety Act requires the Town of Drumheller to designate a Prime Contractor when there is more than one employer or contractor working on a municipality owned worksite. If the owner of the worksite does not designate a prime contractor, then the owner assumes the safety responsibilities for the worksite. The prime contractor must ensure all the work performed at the worksite is in conjunction with all applicable federal, provincial, and municipal legislation.

### Directive:

A Town of Drumheller representative may select and designate a Prime Contractor for any project where there is more than one employer working at the same time during the course of the project at one work site.

Only contractors who have successfully met the criteria required by the Town's Contractor Pre-qualification process will be eligible to be designated as Prime Contractor.

### General Terms & Conditions

The Prime Contractor is responsible for the health and safety of contractors performing work the work site specified in this agreement. Violations of safety requirements may result in stop work, removal of employees, equipment or materials, and may be cause for termination of the contract agreement.

1. Contractors will be required to provide proof of required General Liability insurance, Worker's Compensation insurance, and an effective Health, Safety & Environment program before starting work.
2. The Prime Contractor must conduct and document a hazard assessment of the worksite and planned work, notify Town management of any uncommon hazards that would be introduced into the workplace.
3. Prime Contractors must ensure that the condition and operation of all tools, equipment and vehicles, that are brought onto the Town of Drumheller's work site meet safety regulations, manufacturer requirements, industry standards and Town of Drumheller's safety program requirements.
4. A Prime Contractor who wishes to use Town tools, equipment and vehicles requires written authorization from the Department Director.
5. Prime Contractors will ensure that the employees have received the proper training and orientation before work begins. This includes training on what to do in case of an emergency.
6. Prime Contractors will ensure that all work follows the Alberta OH&S Act, Regulation and Code.
7. Prime Contractors must implement a system where employees can report identified hazards, near misses, incidents, injuries or illnesses to their site contact. This information must be provided to the Town on a monthly basis.
8. Prime Contractors must conduct scheduled inspections of the work area and workers.
9. Prime Contractors are responsible for the control of hazardous substances, emissions, cleanup of spills and accumulation of waste created on the work site.

## OH&S Form Prime Contractor Agreement

### Sign-off

I fully understand and accept the responsibilities of the prime contractor designation in accordance with the Alberta Occupational Health and Safety Act while contracted by the Town of Drumheller and will abide by all Town of Drumheller, OH&S regulations, and Workers Compensation Board requirements.

Event/Project: \_\_\_\_\_ Date(s): \_\_\_\_\_

Location: \_\_\_\_\_

Company/Organization: \_\_\_\_\_

Signed:

\_\_\_\_\_  
*(Print name of Contractor)*

\_\_\_\_\_  
*(Contractor's Signature)*

Witness:

\_\_\_\_\_  
*(Print name of Contractor's Contract Liaison)*

\_\_\_\_\_  
*(Contractor's Contract Liaison Signature)*

\_\_\_\_\_  
*(Date)*

### Discontinuation of Designation Notice

This notice is to inform the contractor listed above that as of [date] \_\_\_\_\_, the Town of Drumheller will be revoking Prime Contractor designation.

Signed:

\_\_\_\_\_  
*(Print name of ToD Representative)*

\_\_\_\_\_  
*(Signature of ToD Representative)*

\_\_\_\_\_  
*(Date)*

*\*\* ToD Rep to provide copy of Discontinuation of Designation Notice to contractor on date of signing.*