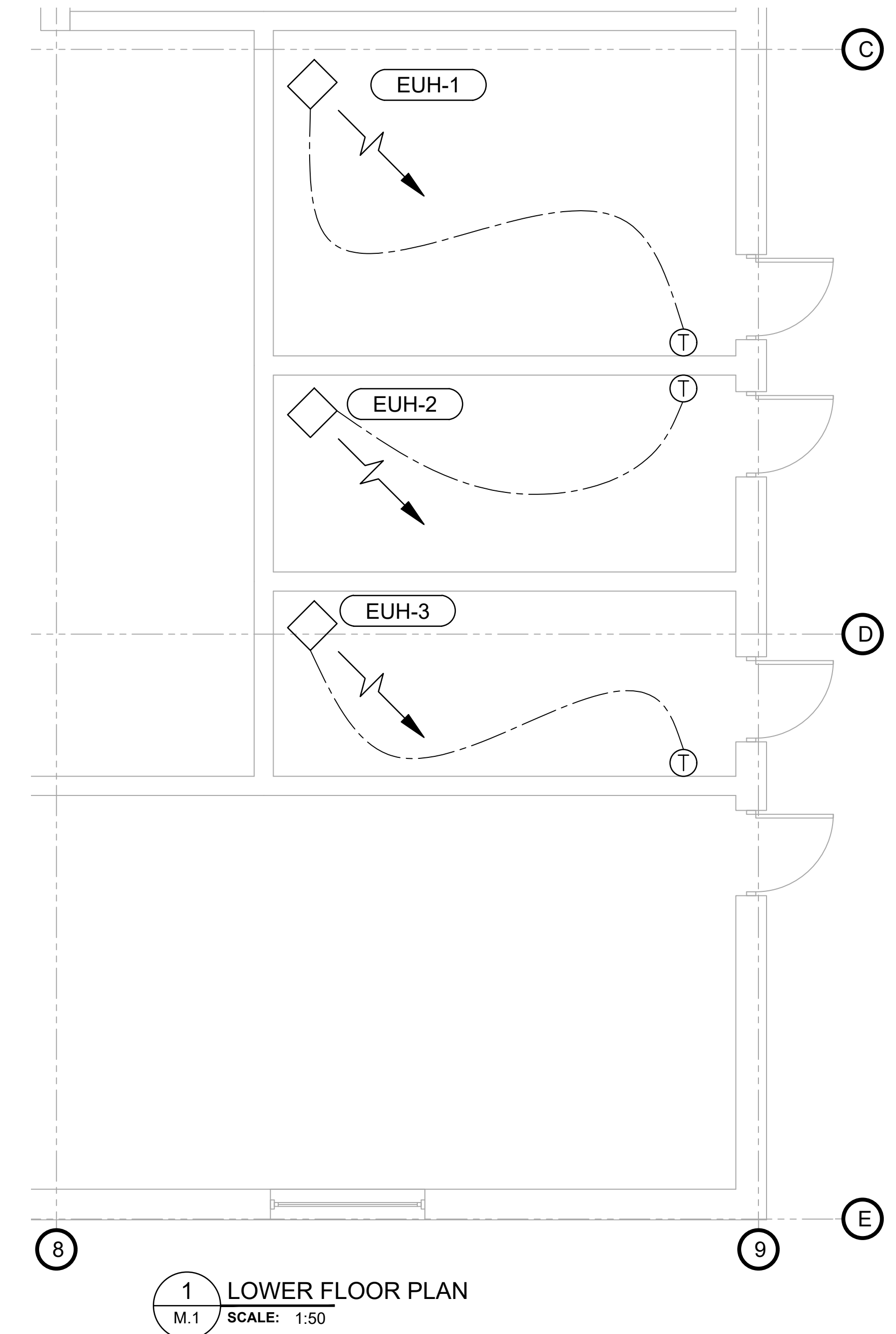
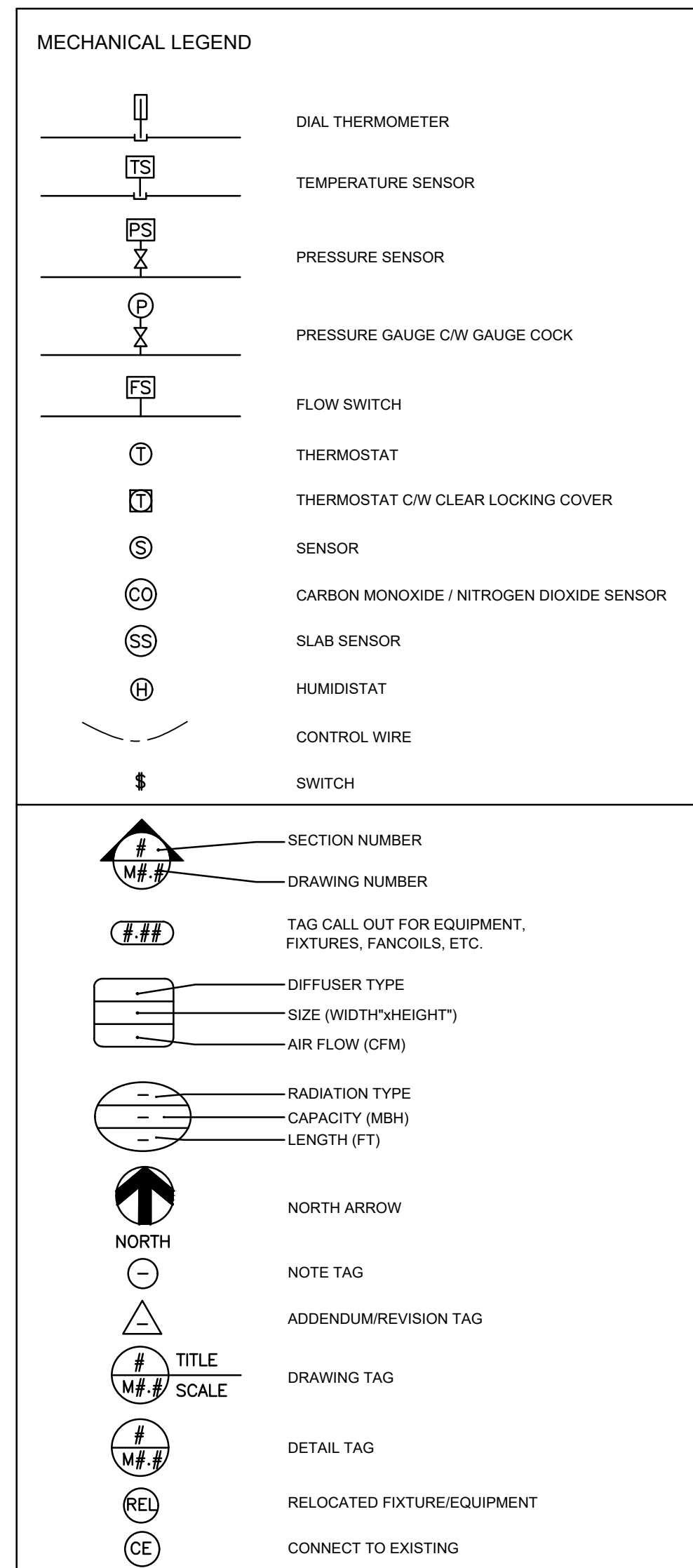


GENERAL NOTES

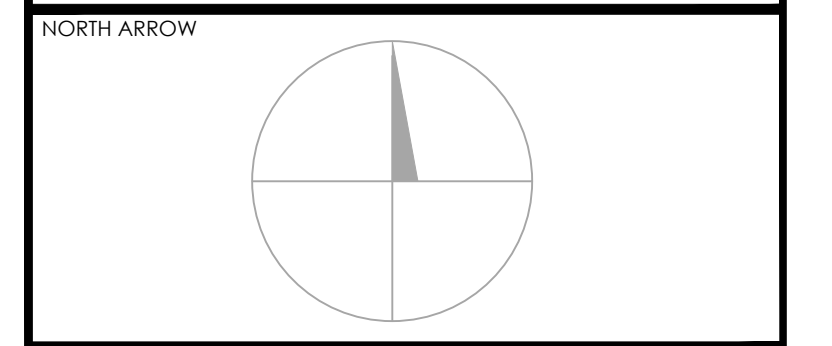
- UNLESS SPECIFICALLY NOTED OTHERWISE THE CONTRACTOR IS TO PROVIDE COMPLETE FULLY FUNCTIONING, TESTED AND COMMISSIONED MECHANICAL SYSTEMS.
- ALL EQUIPMENT IS TO BE INSTALLED IN STRICT ACCORDANCE WITH THE EQUIPMENT MANUFACTURERS RECOMMENDATIONS. THE CONTRACTOR IS TO PROVIDE ALL VALVES, CONTROLS AND ACCESSORIES AS REQUIRED BY THE EQUIPMENT SUPPLIERS/MANUFACTURERS TO ALLOW FOR PROPER OPERATION, SERVICEABILITY AND WARRANTY.
- ALL DRAWINGS AND SPECIFICATIONS ARE COMPLEMENTARY TO EACH OTHER IN THAT ALL APPARATUS, MATERIALS, EQUIPMENT AND METHOD OF INSTALLATION OUTLINED IN THE DRAWINGS AND OR SPECIFICATIONS SHALL BE CONSIDERED ESSENTIAL TO THE CONTRACT. IT IS THE CONTRACTOR'S RESPONSIBILITY TO REVIEW AND COORDINATE WITH ALL CONTRACT DRAWINGS (ARCHITECTURAL, CIVIL, STRUCTURAL, MECHANICAL, ELECTRICAL, INTERIOR DESIGN AND LANDSCAPE) AND SPECIFICATIONS PRIOR TO CONSTRUCTION. REWORK CREATED BY FAILURE TO COORDINATE WILL BE DONE AT THE CONTRACTORS COST.
- WHERE DISCREPANCIES ARISE BETWEEN THE PLANS, SPECIFICATIONS AND OR DETAILS THE MORE STRINGENT (COSTLY) OPTION SHALL BE PRICED.
- DO NOT SCALE DRAWINGS. THE DRAWINGS ARE DIAGRAMMATIC AND LOCATIONS OF EQUIPMENT PIPING AND DUCTWORK ARE APPROXIMATE. THE CONTRACTOR SHALL FIELD VERIFY ALL DIMENSIONS AND COORDINATE WITH ALL OTHER TRADES PRIOR TO FABRICATION AND INSTALLATION. MAKE ALLOWANCE FOR INSULATION, SUPPORTS AND ALL CLEARANCES.
- ALL WORK SHALL BE IN STRICT ACCORDANCE WITH THE APPLICABLE BUILDING CODES AND THE AUTHORITY HAVING JURISDICTION.
- THE CONTRACTOR IS TO REVIEW THE LOCATIONS FOR ALL MECHANICAL SYSTEMS AND EQUIPMENT PRIOR TO INSTALLATION AND COORDINATE WITH ALL OTHER TRADES. CONFLICTS THAT CANNOT BE RESOLVED THROUGH SITE COORDINATION SHOULD BE IDENTIFIED AND REFERRED TO THE MECHANICAL CONSULTANT PRIOR TO INSTALLATION.
- THE CONTRACTOR IS TO REVIEW THE SITE PRIOR TO FABRICATION AND INSTALLATION. PROVIDE AT NO ADDITIONAL COST ALL OFFSETS, ACCESS PANELS, LOW POINT DRAINS ETC. REQUIRED TO MAINTAIN CLEARANCE ABOVE CEILINGS. IN PARKING GARAGES, MAINTAIN A MINIMUM CLEAR HEIGHT OF 2285MM (7'-6") UNLESS SPECIFICALLY NOTED OTHERWISE. IF AFTER REVIEW AND COORDINATION WITH OTHER TRADES, THE REQUESTED CLEAR HEIGHT CANNOT BE MAINTAINED, NOTIFY THE MECHANICAL CONSULTANT IN WRITING. ANY EQUIPMENT, PIPE OR DUCTWORK INSTALLED BELOW THE SPECIFIED CEILING OR MINIMUM CLEARANCE HEIGHT WITHOUT PRIOR WRITTEN APPROVAL WILL BE REMOVED AND REPAIRED AT THE CONTRACTORS COST.
- CONTRACTORS WILL BE CHARGED FOR TIME SPENT REVIEWING AND RESPONDING TO REQUEST FOR INFORMATION, WHERE THE ANSWERS CAN BE FOUND ON THE PLANS OR IN THE SPECIFICATIONS.
- INSULATION, ADHESIVES, VAPOR-BARRIER MATERIALS, AND OTHER ACCESSORIES INSTALLED ON MECHANICAL SYSTEMS SHALL BE NON-COMBUSTIBLE. THE MATERIALS SHALL HAVE SPREAD RATING NOT MORE THAN 2S AND A SMOKE DENSITY NOT MORE THAN 50.
- REFER TO ARCHITECTURAL DRAWINGS FOR ROOF ACCESS.
- DO NOT ALTER ANY OPENING, SLEEVE OR SLAB DUCT LOCATION WITHOUT PRIOR WRITTEN AUTHORIZATION FROM THE STRUCTURAL ENGINEER. SUBMIT SLEEVING SHOP DRAWINGS TO THE STRUCTURAL CONSULTANT FOR APPROVAL.
- ALL VALVES, DAMPERS, CLEAN-OUTS AND APPURTENANCE SHALL BE LOCATED TO BE READILY ACCESSIBLE. PROVIDE AND INSTALL ACCESS PANELS FOR ALL VALVES, DAMPERS, CLEAN-OUTS AND APPURTENANCE INSTALLED WITHIN OR BEHIND WALLS OR NON-REMOVABLE CEILINGS. ACCESS DOOR LOCATED IN FIRE RATED ASSEMBLIES SHALL BE UL-C LISTED TO MATCH THE RATING OF THE ASSEMBLY.
- THE GENERAL AND THE SUBCONTRACTOR(S) ARE TO REVIEW AND STAMP ALL SHOP DRAWINGS PRIOR TO SUBMISSION TO THE MECHANICAL CONSULTANT FOR REVIEW. CONTRACTOR REVIEWS SHALL BE BASED ON COMPLIANCE WITH DESIGN EQUIPMENT AND SPECIFIED ACCESSORIES (COMPLIANCE WITH APPROVED EQUALS LIST: CAPACITY, DIMENSIONS, WEIGHT, POWER REQUIREMENTS, ETC.). THE CONTRACTOR SHALL FLAG FOR APPROVAL DEVIATIONS FROM THE ORIGINALLY SPECIFIED EQUIPMENT. NO EQUIPMENT IS TO BE ORDERED UNTIL THE SHOP DRAWINGS HAVE BEEN REVIEWED AND APPROVED. IF A SHOP DRAWING OF AN ALTERNATE OR APPROVED EQUAL PIECE OF EQUIPMENT HAS BEEN REJECTED THREE TIMES FOR FAILURE TO COMPLY WITH THE SPECIFICATIONS, THE CONTRACTOR WILL FURNISH THE ORIGINALLY SPECIFIED EQUIPMENT AT NO ADDITIONAL COST.
- THE CONTRACTOR IS TO OBTAIN WRITTEN APPROVAL FROM THE MECHANICAL CONSULTANT PRIOR TO PURCHASING EQUIPMENT OR INSTALLING MATERIALS THAT DEVIATE FROM THE SPECIFICATIONS OR APPROVED EQUALS. FAILURE TO DO SO WILL RESULT IN THE CONTRACTOR BEARING THE FULL COST OF REMOVING THE ALTERNATE PRODUCTS AND REPLACING THEM WITH THE SPECIFIED EQUIPMENT OR MATERIALS.



1 LOWER FLOOR PLAN
M.1 SCALE: 1:50

| TAG | SERVICE/LOCATION | TYPE | MANUFACTURER | MODEL | ELECTRICAL | | AIRFLOW | PHYSICAL DATA | | | NOTES |
|-------|------------------|-----------|--------------|------------|------------|------------|---------|---------------|------------|-------------|-------|
| | | | | | V/Ph/Hz | DISCONNECT | | LENGTH (mm) | WIDTH (mm) | HEIGHT (mm) | |
| | | | | | (L/S) | | | | | | |
| EUH-1 | TOP | SUSPENDED | OUELLET | OAS05008AM | 208/1/60 | YES | 240 | 492 | 419 | 310 | 5 kW |
| EUH-2 | MIDDLE | SUSPENDED | OUELLET | OAS05008AM | 208/1/60 | YES | 240 | 492 | 419 | 310 | 5 kW |
| EUH-3 | BOTTOM | SUSPENDED | OUELLET | OAS10008AM | 208/1/60 | YES | 240 | 492 | 419 | 310 | 10 kW |

THESE DRAWINGS ARE TO BE READ IN CONJUNCTION WITH THE ARCHITECTURAL, STRUCTURAL AND ELECTRICAL DRAWINGS. THE DRAWINGS MUST NOT BE SCALED. THIS DRAWING IS THE PROPERTY OF REINBOLD ENGINEERING GROUP AND MAY NOT BE USED WITHOUT PERMISSION. REPORT ANY ERRORS, OMISSIONS, OR DISCREPANCIES TO THE REINBOLD ENGINEERING GROUP PRIOR TO PROCEEDING WITH WORK.



CONSULTANT

STAMPS

PERMIT TO PRACTICE
Reinbold Engineering Group
Signature: [Signature]
Date: May 17 2023 ID#87134
PERMIT NUMBER: P 07559
The Association of Professional Engineers, Geologists and Geophysicists of Alberta

ISSUE SCHEDULE

| NO | YYYY/MM/DD | ISSUE |
|----|------------|-------------------|
| 1 | 2023/05/12 | ISSUED FOR TENDER |

MECHANICAL ENGINEER

703, 10950 - 112TH STREET NW
EDMONTON, AB T5K 2J1
t. 587.524.5599

www.reinboldengineering.com
info@reg-eng.com

CALGARY, AB T2H 0C1 110 - 5970 CENTRE STREET SE t. 403.508.1039
KELOWNA, BC V1Y 8N3 301 - 1664 ROCHER STREET t. 250.763.1049
TORONTO, ON M5S 1H8 901 - 145 WELLINGTON STREET W t. 647.352.1166
VANCOUVER, BC V6J 5K8 400 - 1580 WEST BROADWAY t. 604.737.7333

OWNER/CLIENT

SCALE: AS NOTED

PROJECT NAME AND ADDRESS

WATER TREATMENT PLANT DRUMHELLER

HEATER REPLACEMENT - LOWER FLOOR PLAN

| | |
|--------------------------|---------------------|
| PRINTED ON 2023-05-10 | CHECKED BY KM |
| DRAWN BY MB | JOB No. 16261-23 |
| PERMIT NO. | DWG No. M.1 |